

CURRAN
BIRDS
CO



WHITTLE
HOUSE

Apartment 32, Whittle House
Nightingale Quarter, Derby
£900 Per month



CURRAN BIRDS + CO

Welcome to CB+CO, where *dedication* meets *excellence*, and impeccable service is our hallmark.



STYLISH CITY CENTRE LIVING & SUPERB VIEWS – A most stylish one double bedroomed, third floor apartment, located within the vibrant Nightingale Quarter development. This property offers a most stylish furnished top floor apartment with impressive views over Derby City Centre and set within this most convenient City centre location just a short walk away from the heart of Derby and Derby Railway Station.

Available for immediate letting, the apartment features an open-plan living and dining area with tall windows allowing natural light to flood the space. The modern kitchen is equipped with high-quality integrated appliances, and the spacious double bedroom includes built-in mirrored wardrobes. The contemporary bathroom is finished to a luxurious standard. With its close proximity to the city centre and excellent transport links, this apartment offers the perfect blend of convenience and comfort in a sought-after location.





The Detail

Apartment 32, Whittle House is a sophisticated third-floor apartment boasting elevated views of Derby City Centre. Situated in the modern and thriving Nightingale Quarter, this property is designed with modern living in mind. The open-plan living and dining area is light and airy, with tall windows framing the impressive city views. The space features a 52-inch smart TV and an electric recliner sofa, providing a comfortable and stylish setting for relaxation. The grey wood grain effect flooring throughout adds a stylish yet practical touch. The contemporary kitchen features white high-gloss handleless units paired with a grey wood grain effect work surface and splashback. It comes fully equipped with integrated Electrolux appliances, including a stainless-steel oven, induction hob, microwave, slimline dishwasher, washer/dryer, and tall fridge freezer, ensuring modern convenience.

The spacious double bedroom offers a king-size bed and built-in mirrored sliding door wardrobes, maximising storage and space. The large window provides stunning views of the city centre. The modern bathroom is finished to a high standard, featuring a white three-piece suite with a paneled bath, shower mixer attachment, and metro-style tile splashbacks. Chrome fixtures, including a heated towel rail, add a touch of luxury.

Additional features of the property include a built-in airing cupboard, electric meter, and access to the hot water storage tank, providing a comfortable and hassle-free living experience.

Lift access is conveniently located next to the apartment's front door. The Nightingale Quarter also offers on-site amenities, including a gym and restaurant, making it a highly desirable location.







CURRAN BIRDS + CO

The Location

Located in the vibrant Nightingale Quarter, this apartment benefits from a lively mix of office spaces, bars, restaurants, and a gym, creating a vibrant and convenient environment. Just moments from Derby's city centre, the apartment offers easy access to a variety of local amenities, including shops, cafes, and the Derbion Shopping Centre which is located just a few minutes walk away from the apartment.

The property is also well-situated for Pride Park, which offers a wide range of facilities including retail outlets, restaurants, and leisure options. Furthermore, the apartment is conveniently located for major local employers such as Rolls-Royce, making it an ideal location for professionals.

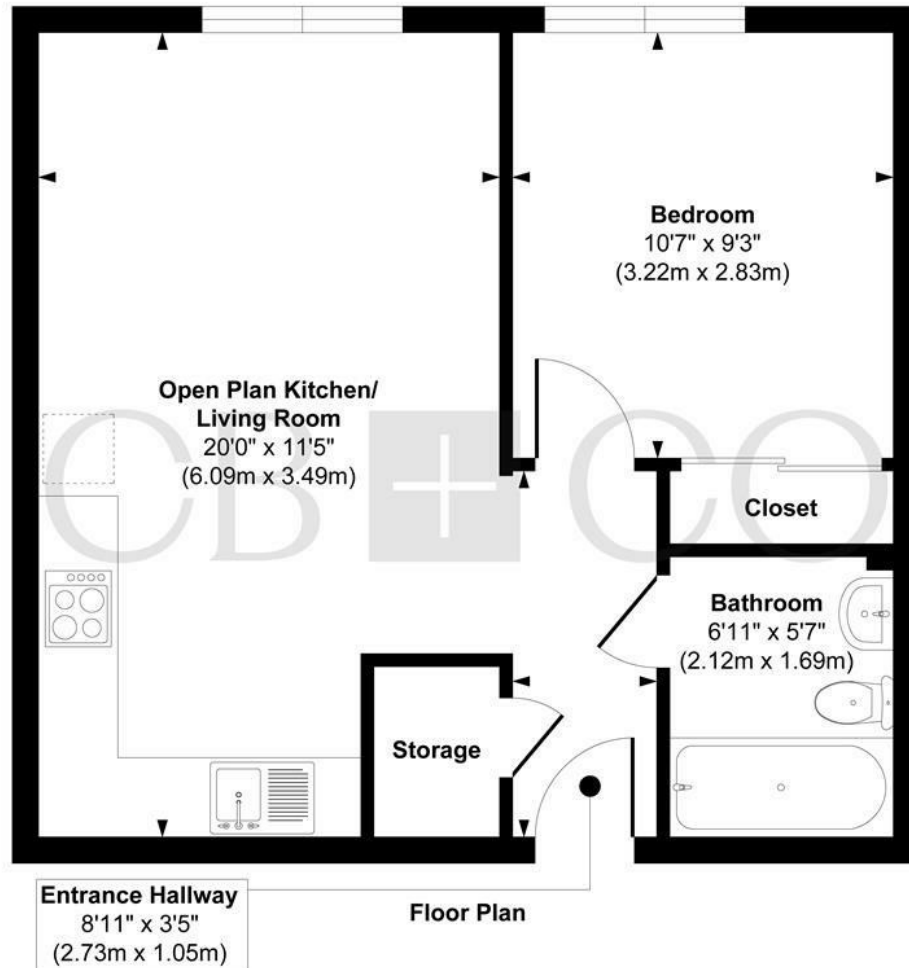
The property also benefits from excellent transport links, with Derby Railway Station just a short distance away, offering direct services to London and beyond.







Whittle House, Nightingale Quarter, Derby



Approx. Gross Internal Floor Area 418 sq. ft / 38.80 sq. m

Illustration for identification purposes only, measurements are approximate, not to scale.

Produced by Elements Property

The Particulars

- Superb Modern One Double Bedroom Third Floor Apartment
- Stylish Design with Stunning Views
- City Centre Location - Set within the Highly Sought after Nightingale Quarter
- Furnished to a Stylish Standard
- Superb Open Plan Living Dining Kitchen
- Double Bedroom with Superb Views & Built in Wardrobes
- High Specification Contemporary Bathroom
- Close to Derby Railway Station
- Just a Short Walk Away from the Derbion Centre & City Centre Shops
- Available Now

Size

Approx 418.00 sq ft

Energy Performance Certificate (EPC)

Rating

Council Tax Band

A

CURRAN BIRDS + CO

Let's *Talk*

01332 411050
hello@curranbirds.co
curranbirds.co

The particulars above are a guide, not an offer or contract. Descriptions photographs and plans are not statements or representations of fact. Measurements are approximate and not to scale. Prospective purchasers must verify the accuracy of the information within the particulars. Curran Birds + Co does not give any representations or warranties; nor represent the Seller legally. Curran Birds + Co has no liability, for any costs, losses or expenses incurred by the Seller or a prospective buyer relating to the sales and buying transaction. Our Sales Disclaimer, trading names and privacy policy on how your data is processed and used is found in full on our website in our Privacy Statement.

© Curran Birds + Co 2024 All rights Reserved