



12 Palm Close, Derby, DE23 3SB  
£1,500 Per month









# 12 Palm Close

## Derby, DE23 3SB

- Littleover School Catchment — Ideal For Families
- Bright Living Room With Sliding Doors Leading To The Garden
- Spacious Dining Kitchen — Perfect For Family Meals
- Three Additional Bedrooms With Parkland Views & Storage
- Rear Garden With Patio And Lawn For Outdoor Enjoyment
- Well-Proportioned Four-Bedroom Detached Home On A Corner Plot
- Feature Marble Fireplace And Underfloor Heating For Added Warmth
- Primary Bedroom With Built-In Wardrobes And En-Suite Shower Room
- Private Driveway, Detached Garage
- Convenient Location Close To Shops, Schools & Transport Links

**LITTLEOVER SCHOOL CATCHMENT** - Located in the sought-after suburb of Littleover, Palm Close is a four-bedroom detached family home offering generous living spaces and a versatile layout. Set on a corner plot, the property benefits from ample parking, a detached garage, and direct access to St George's playing fields, providing open views and a peaceful backdrop.

The spacious living room features a marble fireplace and underfloor heating, connecting to the rear garden via sliding patio doors. The dining kitchen offers plenty of space for family gatherings. Upstairs are four well-proportioned bedrooms, including a primary suite with built-in wardrobes and an en-suite. With excellent school catchment areas, outdoor space, and a prime location, this property is ideal for families seeking comfort and convenience.

£1,500 Per month



The Detail

The Location

Reservation Fee & Deposit







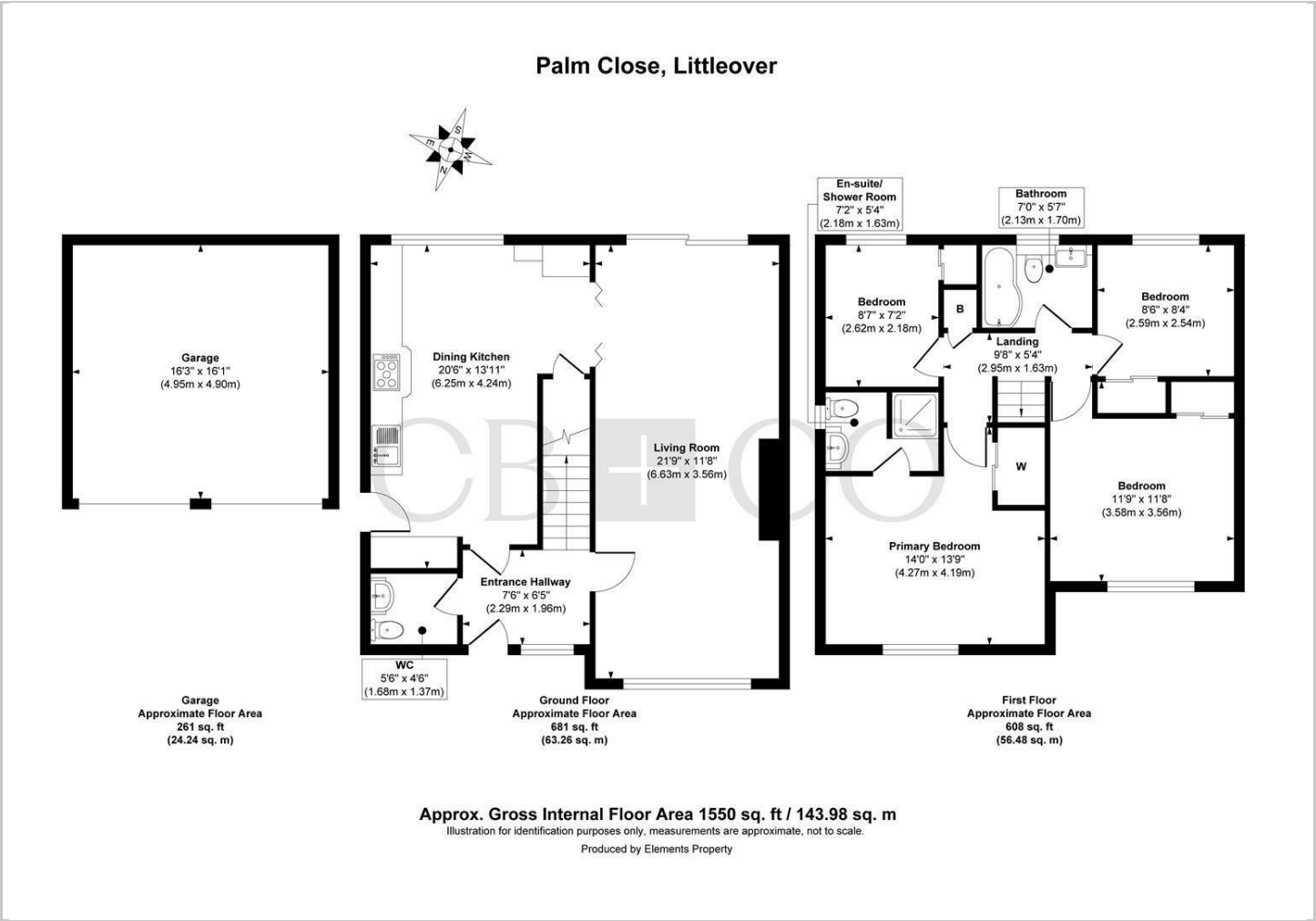
Directions







Floor Plans



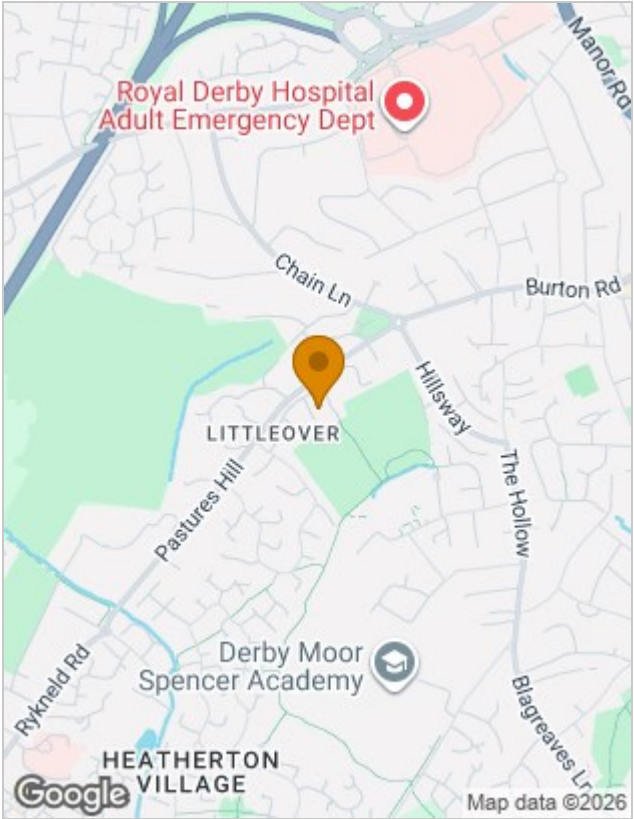
Viewing

Please contact our Lettings Office on 01332 411050 if you wish to arrange a viewing appointment for this property or require further information.

The particulars are set out as a general outline only for the guidance of intended purchasers or lessees, and do not constitute, any part of a contract. Nothing in these particulars shall be deemed to be a statement that the property is in good structural condition or otherwise nor that any of the services, appliances, equipment or facilities are in good working order. Purchasers should satisfy themselves of this prior to purchasing.

First Floor, Darley Abbey Mills Middle Mill, Darley Abbey, Derby, DE22 1DZ  
Tel: 01332 411050 Email: hello@curranbirds.co

Location Map



Energy Performance Graph

