



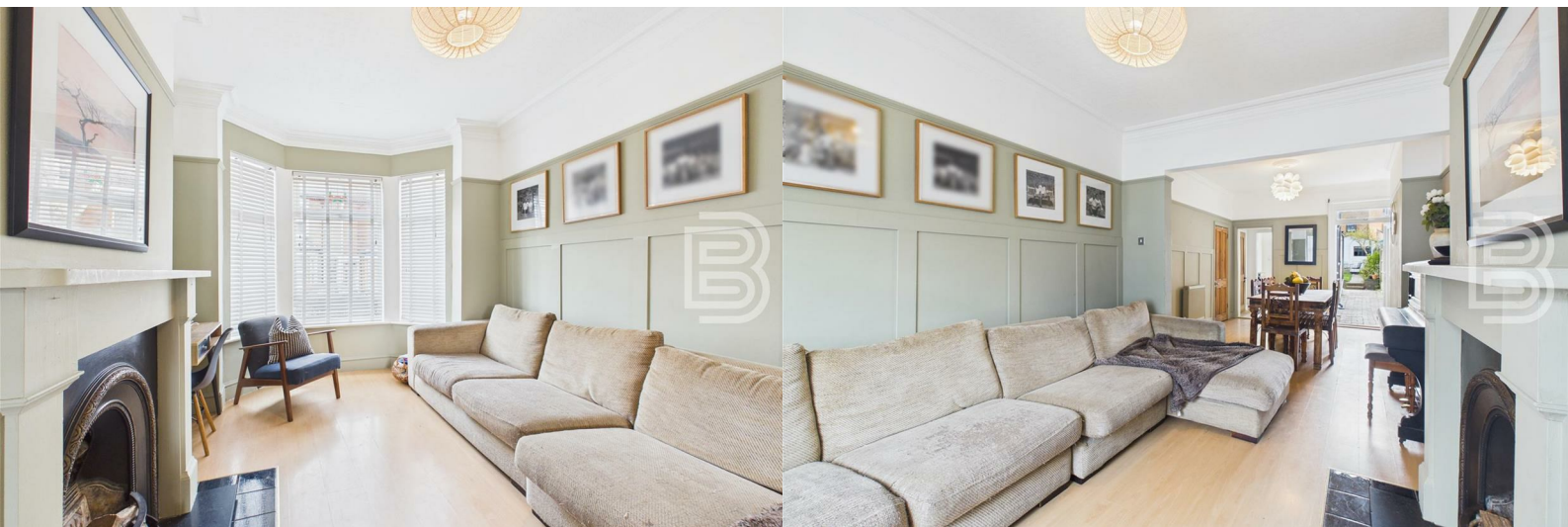
Ellis Brooke



## 18 Sycamore Grove

, Rugby, CV21 2QY

**Guide price £285,000**



# 18 Sycamore Grove

, Rugby, CV21 2QY

Guide price £285,000



## Hallway

Composite part double glazed front door. Stairs to first floor. Door into Lounge/Diner. Original Minton tiled flooring. Coving. Dado rail. Radiator.

## Lounge/Diner

Double glazed bay window to the front aspect. Double glazed doors to the rear aspect. Understairs cupboard. Doorway in Inner Lobby. Wood effect flooring. Part wood panelling to walls. Three radiators. Coving. Picture rail. Cast iron fireplace.

## Inner Lobby/Utility

Doorway to Breakfast Kitchen. Door to Shower Room, Space and plumbing for washing machine and dryer. Wall mounted modern Worcester combination boiler.

## Shower Room

Fully tiled and enclosed shower cubicle with rainfall style shower. Small sink set upon vanity unit. Low flush WC. Extractor. Tiling to splashbacks. Heated towel rail.

## Breakfast Kitchen

Double glazed window to the side and double glazed French Doors onto the garden via a 'Conservatory' style area. Part wood effect flooring and part tiled flooring. Radiator. Range of base and eye level units with work surfaces over. Stainless steel sink/drainer with directional mixer tap. Integrated oven with hob and extractor. Space for a fridge/freezer. Inset spotlights to part of the room.

## Landing

Doors off to all 3 bedrooms and bathroom. Stairs to loft room.

## Bedroom One

Double glazed bay window to the front aspect. Radiator. Cast iron fireplace. Coving.

## Bedroom Two

Double glazed window to the rear aspect. Radiator.

## Bedroom Three

Double glazed window to the rear aspect. Radiator. Feature cast iron fireplace.

## Bathroom

Double glazed window to the side aspect. Panelled bath with rainfall style shower over. Low flush WC. Heated towel rail. Extractor. Wash hand basin set upon vanity unit. Inset spotlights.

## Loft Room

Double glazed window to the rear aspect. Two wooden roof windows to the front. Eaves cupboards.

## Frontage

Enclosed by low level brick wall with metal railings. Metal gate leading to front door. Paved.

## Rear Garden

Initial blue brick patio and side return leads to central lawned area with a plant and shrub border to one side. Enclosed by timber fencing.

Gated access to rear lane. Wooden courtesy door into garage.

#### Garage

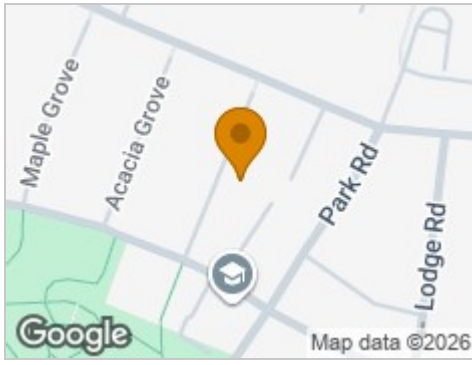
Concrete sectional garage with single glazed window to the garden side plus a courtesy door.

#### Money Laundering Regulations

Should a purchaser(s) have an offer accepted on a property marketed by Ellis Brooke Estate Agents, they will need to undertake an identification check and be asked to provide information on the source and proof of funds. This is done to meet our obligations under Anti Money Laundering Regulations (AML) and is a legal requirement. We use a specialist third party service to verify your information. The cost of these checks is £25 (inc VAT) which is paid in advance, when an offer is agreed and prior to a sales memorandum being issued. This charge is non-refundable under any circumstances.



## Road Map



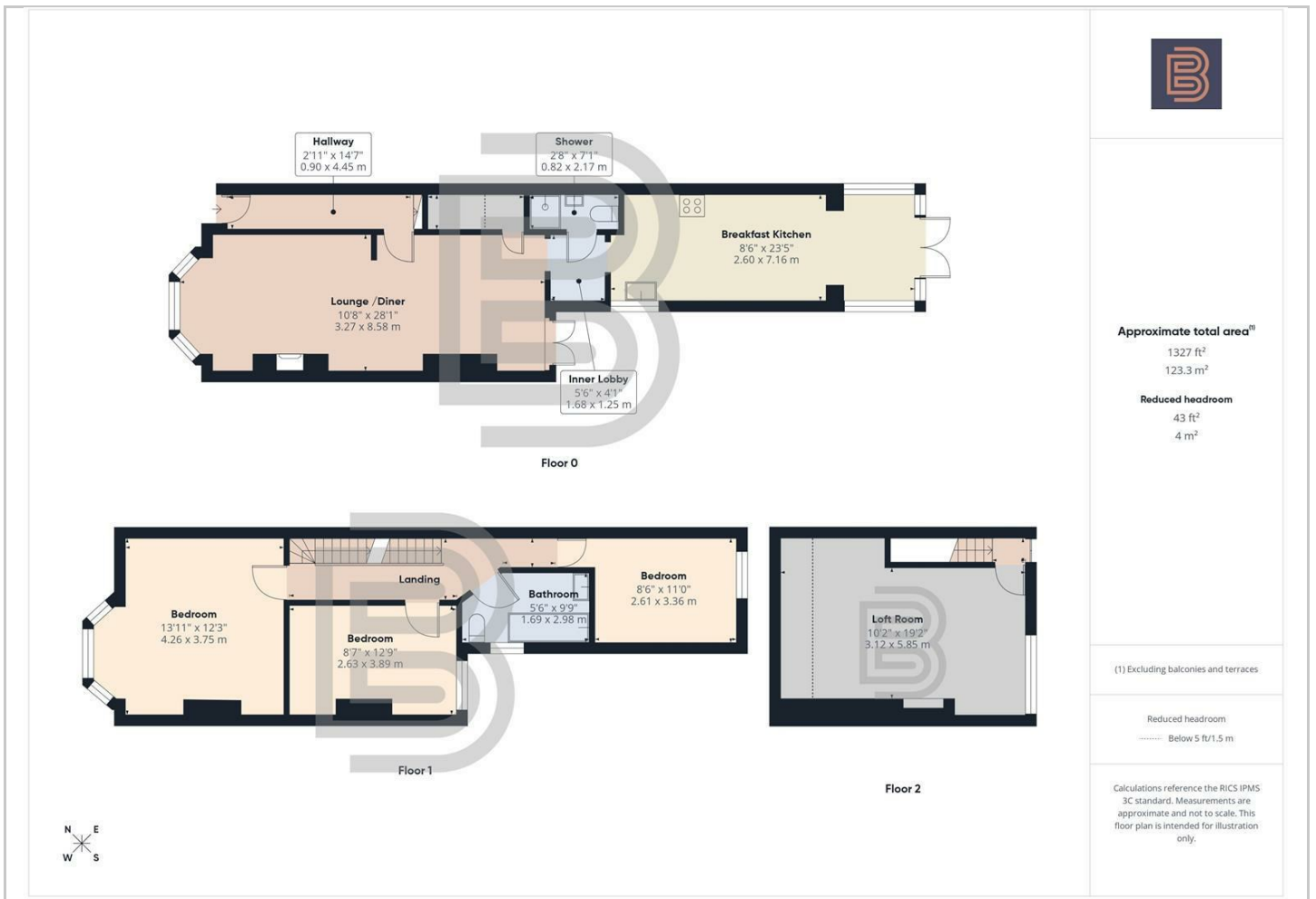
## Hybrid Map



## Terrain Map



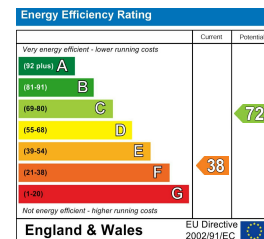
## Floor Plan



## Viewing

Please contact our Rugby Office on 01788 221242 if you wish to arrange a viewing appointment for this property or require further information.

## Energy Efficiency Graph



These particulars, whilst believed to be accurate are set out as a general outline only for guidance and do not constitute any part of an offer or contract. Intending purchasers should not rely on them as statements of representation of fact, but must satisfy themselves by inspection or otherwise as to their accuracy. No person in this firm's employment has the authority to make or give any representation or warranty in respect of the property.



36 Sir Frank Whittle Business Centre, Great Central Way, Warwickshire, CV21 3XH  
Tel: 01788 221242 Email: info@ellisbrooke.co.uk ellisbrooke.co.uk