



Ellis Brooke



.. Two .. A .. Hoods Way, Rugby, CV22 7EU

Guide price £210,000

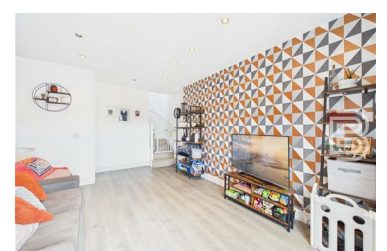


This spacious 2 Double Bedroom End of Terrace home is situated in the popular residential area of Bilton. The home has accommodation that is set over two floors and comprises;

Entrance Hall, Kitchen, Lounge/Diner, WC, 2 Double Bedrooms and a Bathroom.

The property is in close proximity to a range of local amenities including shops and stores as well as being close to well-regarded schooling.

- 2 Double Bedrooms
- Close to Well Regarded Schooling
- Rear Access
- Garden
- Well Presented
- End of Terrace
- Close to Local Amenities
- Parking to the Rear
- Virtual Tour



36 Sir Frank Whittle Business Centre, Great Central Way, Warwickshire, CV21 3XH
Tel: 01788 221242 Email: info@ellisbrooke.co.uk ellisbrooke.co.uk