



## 5 MARKET PLACE

MASHAM, RIPON, HG4 4DZ

£700 PCM

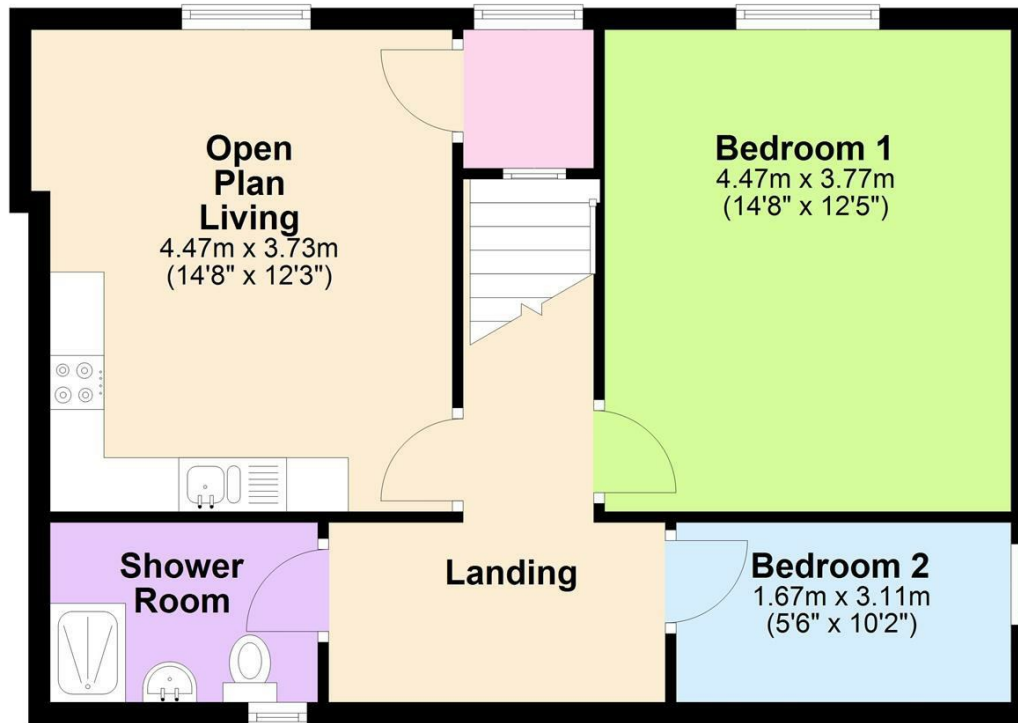
A spacious and bright two bedroom character apartment located in the Masham Market Place with a private entrance to the first floor accommodation. The property comprises of an open plan living space with kitchen, dining and living areas plus a double and a single bedroom and a contemporary style shower room. The apartment also benefits from electric heating and secondary double glazing.

**NORMAN F. BROWN**

Est. 1967

## First Floor

Approx. 55.9 sq. metres (601.5 sq. feet)



Total area: approx. 55.9 sq. metres (601.5 sq. feet)



Agents Note: Whilst every care has been taken to prepare these particulars, they are for guidance purposes only. All measurements are approximate and are for general guidance purposes only and whilst every care has been taken to ensure their accuracy, they should not be relied upon and potential buyers/tenants are advised to recheck the measurements

Bedale Office Lettings  
6 Bridge Street  
Bedale  
North Yorkshire  
DL8 2AD

01677 422282  
bedale@normanfbrown.co.uk  
www.normanfbrown.co.uk

**NORMAN F. BROWN**

Est. 1967