



37 Digby Road
Evesham, WR11 1BW

Offers over £250,000



CHRISTIAN
LEWIS
—PROPERTY—

37 Digby Road

Evesham, WR11 1BW

AN EXTENDED TWO BEDROOM SEMI DETACHED HOME, NESTLED IN THE CORNER OF THIS NO THROUGH ROAD

An excellent opportunity to purchase a beautifully presented home, ideally situated on the sought-after Digby Road. This property offers a private rear garden, generous parking facilities, and is maintained in immaculate condition throughout – making it a perfect choice for comfortable, modern living.

The property features a welcoming living room and a separate dining room, providing versatile spaces for both relaxation and entertaining. To the rear, an extended kitchen opens into a cosy snug area, creating the perfect setting for family gatherings. Additional ground-floor benefits include a practical utility room and a convenient downstairs WC. Upstairs, there are two well-proportioned bedrooms accompanied by a modern family bathroom.





Additional Information

Tenure: Freehold

Local Authority: Wychavon

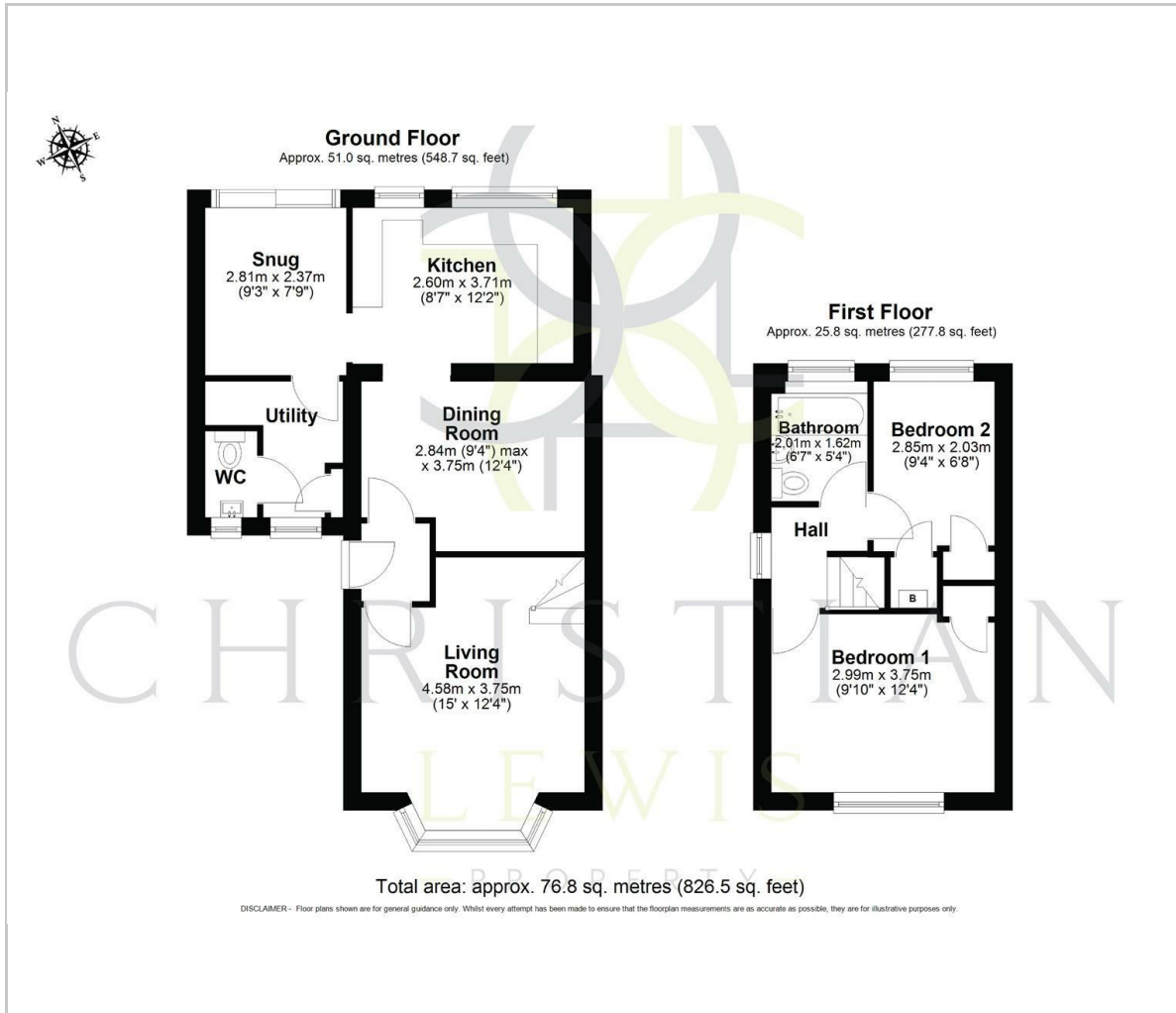
Council Tax Band: We understand that the Council Tax Band for the property is Band B

EPC Rating: C

Disclaimer

Whilst we make enquiries with the Seller to ensure the information provided is accurate, Christian Lewis makes no representations or warranties of any kind with respect to the statements contained in the particulars which should not be relied upon as representations of fact. All representations contained in the particulars are based on details supplied by the Seller. Your Conveyancer is legally responsible for ensuring any purchase agreement fully protects your position. Please inform us if you become aware of any information being inaccurate.

Floor Plan



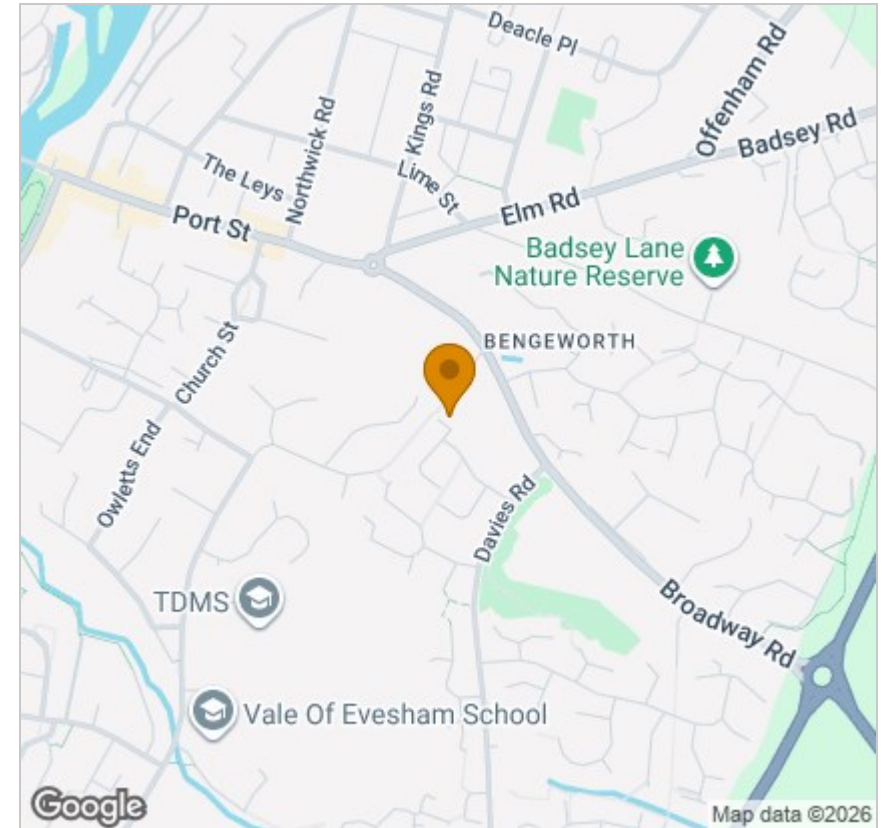
Viewing

Please contact our Evesham Office on 01386 442929 if you wish to arrange a viewing appointment for this property or require further information.

These particulars, whilst believed to be accurate are set out as a general outline only for guidance and do not constitute any part of an offer or contract. Intending purchasers should not rely on them as statements of representation of fact, but must satisfy themselves by inspection or otherwise as to their accuracy. No person in this firm's employment has the authority to make or give any representation or warranty in respect of the property.

86 High Street, Evesham, Worcestershire, WR11 4EU
Tel: 01386 442929 Email: sales@christianlewisproperty.co.uk www.christianlewisproperty.co.uk

Area Map



Energy Efficiency Graph

