



14 Charlton Close, Evesham, WR11 2QE

Guide price £375,000





Guide price £375,000

14 Charlton Close

Evesham, WR11 2QE

- Beautifully presented and extended semi-detached bungalow
- Turn-key ready throughout with a high-quality finish
- Contemporary fitted kitchen with island
- Seamless indoor-outdoor flow to a landscaped rear garden
- Immaculately maintained and thoughtfully updated by the current owners
- Situated in a quiet and highly desirable location
- Stunning open-plan kitchen/dining area with bi-fold doors
- Three well-proportioned bedrooms
- Garage and driveway parking providing ample off-road parking
- Early viewing highly recommended to fully appreciate the quality on offer

Set within a quiet and highly regarded cul-de-sac in Charlton Close, this beautifully presented and significantly enhanced semi-detached bungalow offers exceptional, turn-key living with a seamless blend of style, space and practicality.

Having been thoughtfully extended and meticulously updated by the current owners, the property now provides a superb standard of accommodation throughout. At the heart of the home is a stunning open-plan kitchen, dining and family space, designed with modern living in mind. Flooded with natural light via skylights and bi-fold doors, this impressive area effortlessly connects the indoors with the landscaped rear garden, creating the perfect setting for both everyday living and entertaining.

The kitchen itself is finished to a high specification, featuring sleek cabinetry and quality work surfaces, complemented by a central island that forms a natural social hub. This space flows beautifully into the dining area, with direct access onto the patio, enhancing the sense of openness.

The lounge provides a more cosy retreat, complete with a feature fireplace and tasteful décor, ideal for relaxing evenings.

The accommodation continues with three well-proportioned bedrooms, including a generous principal bedroom, alongside a contemporary family bathroom and additional cloakroom.

Externally, the property continues to impress. The rear garden has been thoughtfully landscaped to provide a low-maintenance yet highly attractive outdoor space, with a paved seating area, lawn and established planting, all enjoying a good degree of privacy. A garage and driveway provide ample off-road parking.

Finished to an excellent standard throughout, this is a home that can quite simply be moved straight into and enjoyed from day one. Properties of this calibre, particularly in such a desirable residential setting, are rarely available and early viewing is highly recommended.



Additional Information

Tenure: We understand that the property for sale is Freehold

Local Authority: Wychavon District Council

Council Tax Band: We understand that the Council Tax Band for the property is Band C

EPC Rating D

Disclaimer

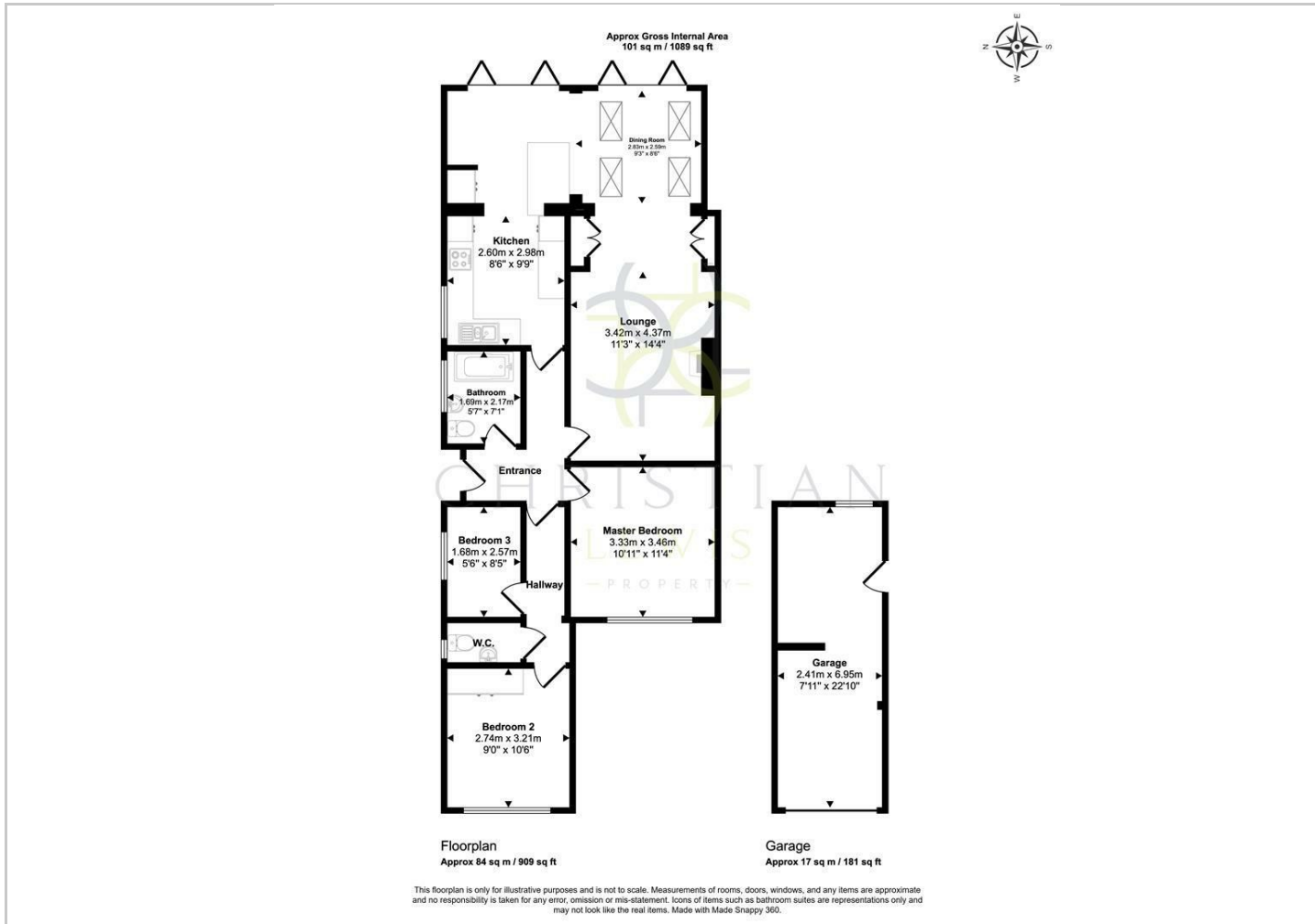
Whilst we make enquiries with the Seller to ensure the information provided is accurate, Christian Lewis makes no representations or warranties of any kind with respect to the statements contained in the particulars which should not be relied upon as representations of fact. All representations contained in the particulars are based on details supplied by the Seller. Your Conveyancer is legally responsible for ensuring any purchase agreement fully protects your position. Please inform us if you become aware of any information being inaccurate.



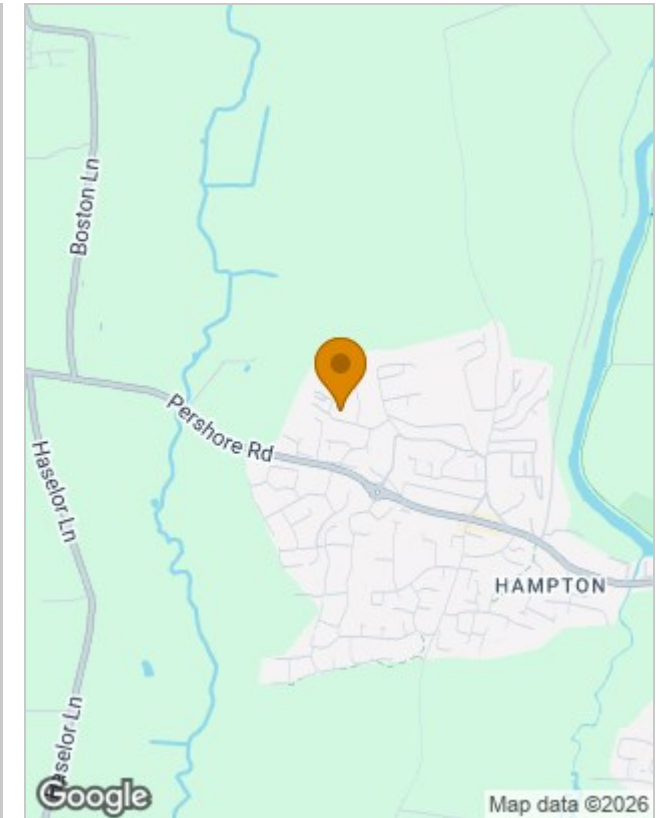




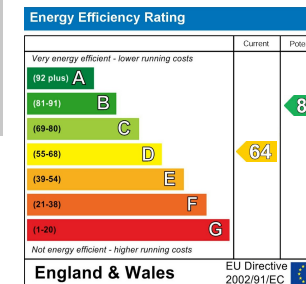
Floor Plans



Location Map



Energy Performance Graph



Viewing

Please contact our Evesham Office on 01386 442929 if you wish to arrange a viewing appointment for this property or require further information.

The particulars are set out as a general outline only for the guidance of intended purchasers or lessees, and do not constitute, any part of a contract. Nothing in these particulars shall be deemed to be a statement that the property is in good structural condition or otherwise nor that any of the services, appliances, equipment or facilities are in good working order. Purchasers should satisfy themselves of this prior to purchasing.