



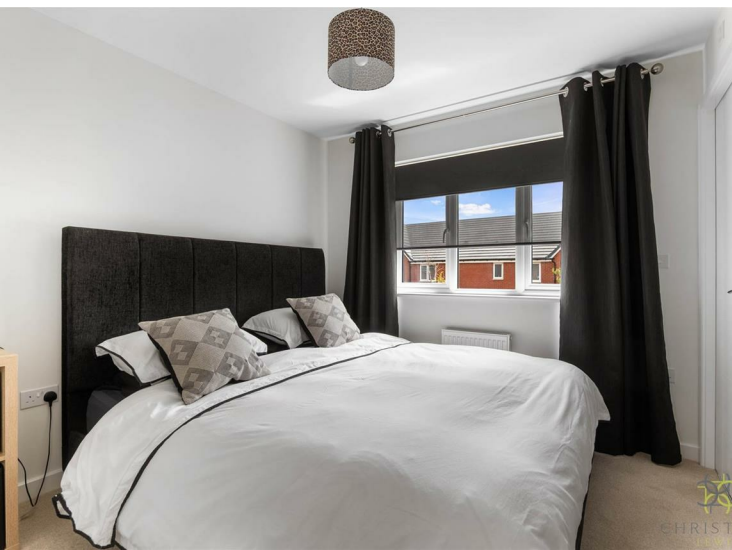
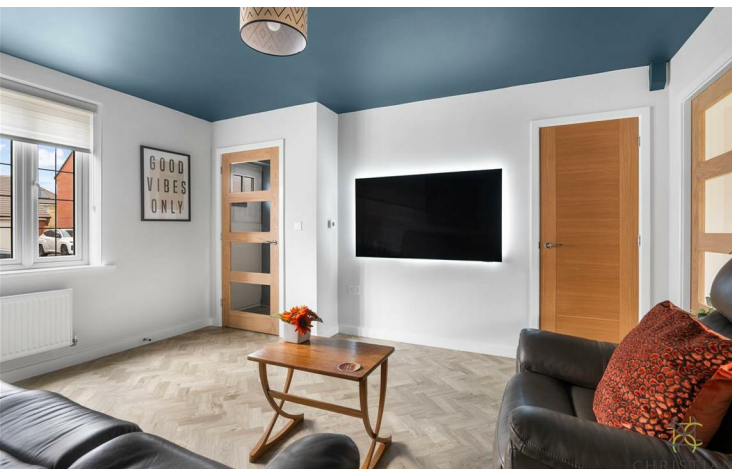
4 Green Templeton Gardens, Evesham, WR11 2TB

**£300,000**



CHRISTIAN  
LEWIS  
—PROPERTY—





## 4 Green Templeton Gardens, Evesham, WR11 2TB

£300,000

A stylish starter home with upgrades galore!

This beautifully presented, nearly new semi-detached property offers a rare opportunity to own a modern home where all the optional upgrades and extras have already been thoughtfully included. Situated in the ever-popular Evesham Gate, this stylish residence is ideal for first-time buyers, downsizers, or investors seeking a turnkey property with no onward chain.

From the moment you arrive, you'll appreciate the attention to detail and contemporary design throughout. The home offers deceptively spacious accommodation, combining modern living with comfort and practicality. Move-in ready and meticulously maintained, this property must be viewed in person to truly appreciate the quality of finish, generous proportions, and prime location it enjoys.

The accommodation is well laid out and thoughtfully designed, offering both style and functionality. Upon entering the property, you are welcomed by a spacious entrance hall that leads into a bright and comfortable living room—perfect for relaxing or entertaining. To the rear of the home, the modern kitchen/diner provides an ideal space for family meals and social gatherings, complete with a useful utility area and a convenient downstairs W/C.

Upstairs, the property boasts three well-proportioned bedrooms. The master bedroom benefits from a private en-suite shower room, while the remaining two bedrooms are served by a contemporary family bathroom.



#### Additional Information

Tenure: We understand that the property is for sale Freehold.

Local Authority: Wychavon District Council

Council Tax Band: We understand that the Council Tax Band for the property is Band C

EPC Rating: B

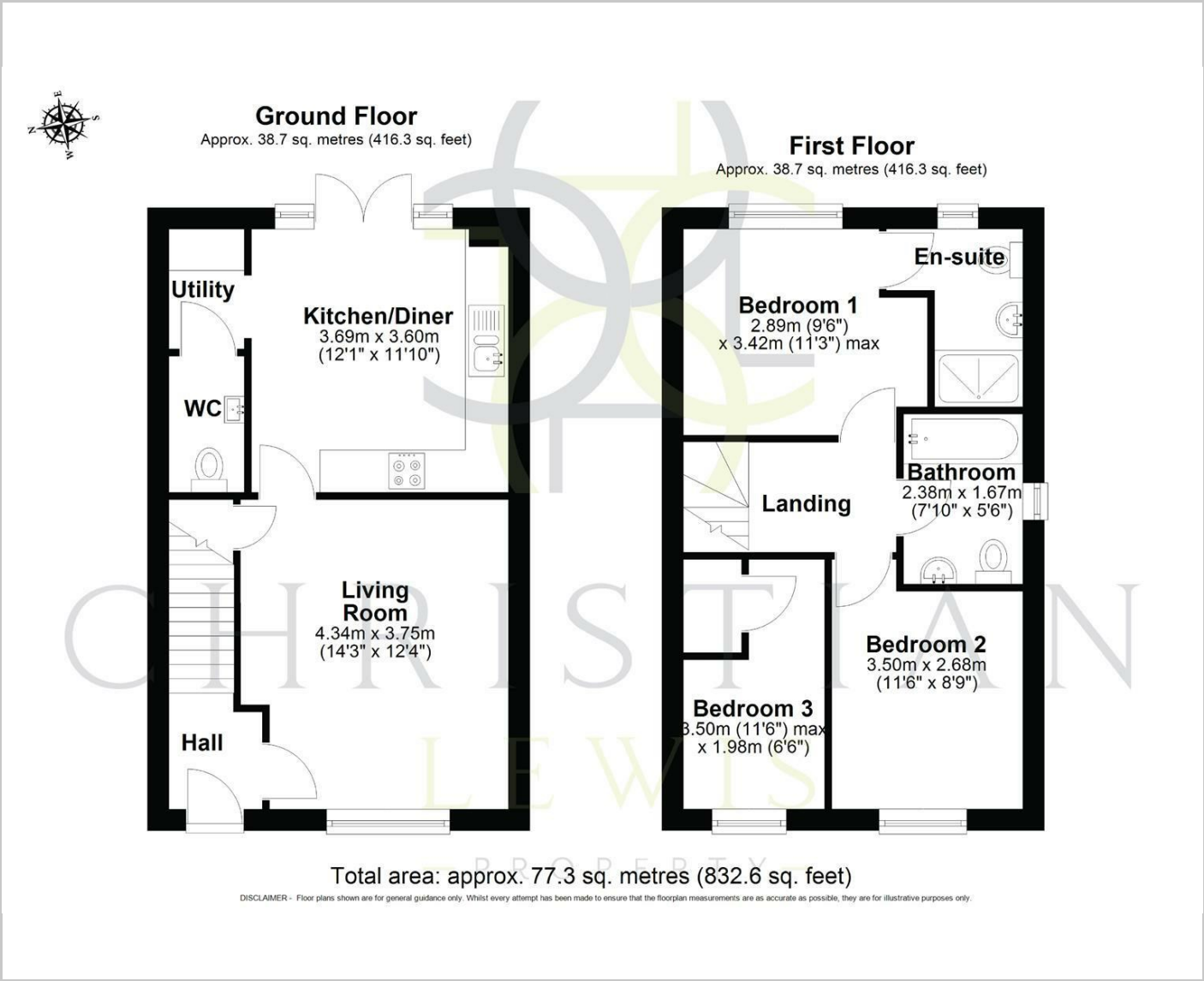
Estate charges apply

#### Disclaimer

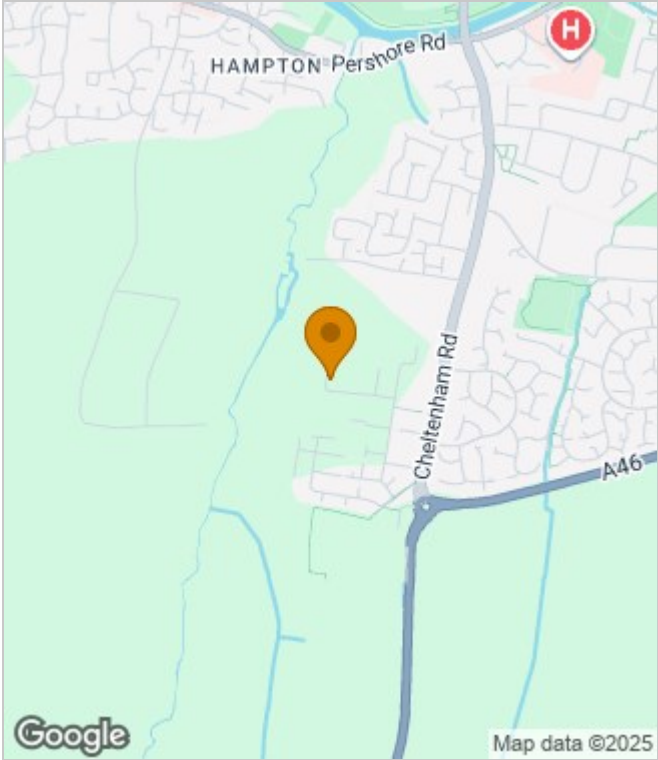
Whilst we make enquiries with the Seller to ensure the information provided is accurate, Christian Lewis makes no representations or warranties of any kind with respect to the statements contained in the particulars which should not be relied upon as representations of fact. All representations contained in the particulars are based on details supplied by the Seller. Your Conveyancer is legally responsible for ensuring any purchase agreement fully protects your position. Please inform us if you become aware of any information being inaccurate.



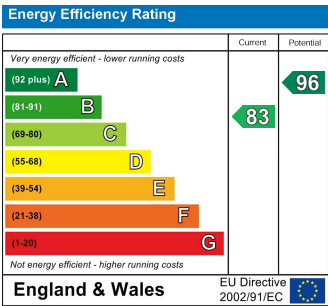
Floor Plans



Area Map



Energy Performance Graph



These particulars, whilst believed to be accurate are set out as a general outline only for guidance and do not constitute any part of an offer or contract. Intending purchasers should not rely on them as statements of representation of fact, but must satisfy themselves by inspection or otherwise as to their accuracy. No person in this firms employment has the authority to make or give any representation or warranty in respect of the property.