



RUPERT KETTLE DRIVE

SOUTHAM, CV47 2PU

GUIDE PRICE £315,000
FREEHOLD

Nestled in the heart of the highly sought-after village of Bishops Itchington, this charming three-bedroom home combines comfort, style, and convenience. Beautifully presented throughout, it offers a welcoming space that is ready for its next owners to simply move in and enjoy.

RUPERT KETTLE DRIVE

• 3 Bedrooms • Utility

Room • Office • Downstairs W/C • Off Road

Parking • Enclosed

Garden • Conservatory • Well

Presented • Close To Amenities • Good Road

Links Nearby



Nestled in the heart of the highly sought-after village of Bishops Itchington, this charming three-bedroom home combines comfort, style, and convenience. Beautifully presented throughout, it offers a welcoming space that is ready for its next owners to simply move in and enjoy.

Ground Floor:

-Upon entering, you are welcomed through a practical entrance porch, which leads directly into the lounge and provides easy access to the rest of the home.

-At the front of the home sits a bright and airy lounge, offering the perfect space to unwind and relax at the end of the day.

-At the heart of the home lies the fully fitted kitchen, thoughtfully designed with a range of wall and base units. It comes equipped with an electric oven and hob, along with under-counter space for essential white goods, as well as a spacious pantry cupboard providing excellent storage.

-Conveniently located just off the kitchen is the separate dining room, a versatile space that offers the ideal room for family dining.

-Accessed from the kitchen, the conservatory offers direct access to the garden and serves as the perfect spot to sit back, relax, and enjoy the views of the garden.

-The garage has been thoughtfully converted to provide a practical home office, a useful utility area, and a convenient W/C. With its own separate front access, this versatile space is perfectly suited for client-facing work from home or adaptable to a variety of family needs.

-The utility room provides additional access to the rear of the home, along with further under-counter space for white goods,

making it a highly practical addition to the property.

First Floor:

-The main bedroom is positioned at the front of the property and is a well-proportioned double room, complete with built-in wardrobes.

-The second bedroom is another generous double, set to the rear of the home, and also benefits from built-in wardrobes.

-Bedroom three is a well-proportioned single room that would also make an ideal home office or nursery.

-The shower room is conveniently located to serve all bedrooms and features a modern tiled suite, comprising a corner shower cubicle, hand basin, and W/C.

Garden, Exterior & Further Property Information:

-Outside, the home is complemented by an enclosed rear garden, laid to both gravel and decking for easy maintenance.

-This attractive home also benefits from gas central heating and double glazing throughout, with all the amenities and stunning countryside of South Warwickshire right on the doorstep.

Important Property Information:

Tenure: Freehold

Local Authority: Stratford On Avon District Council

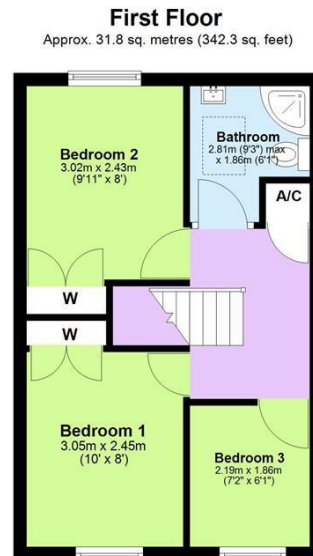
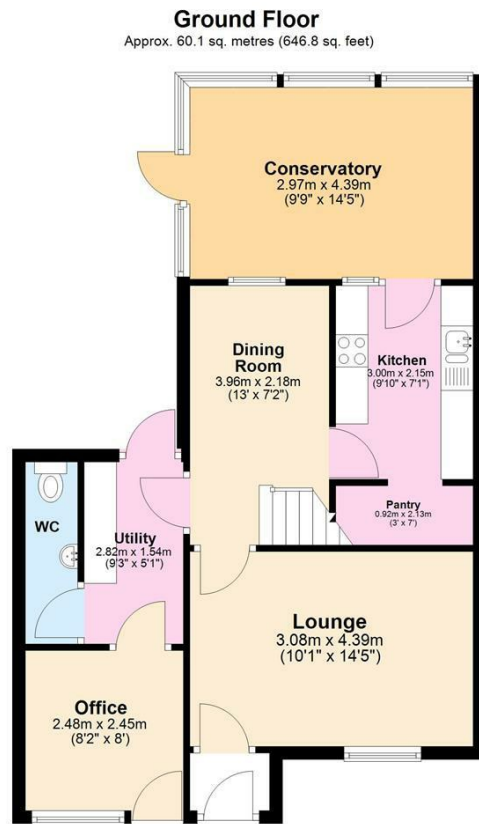
Council Tax Band: C

EPC: C



RUPERT KETTLE DRIVE





Total area: approx. 91.9 sq. metres (989.1 sq. feet)

This plan is for illustrative purposes only. It is not drawn to scale. Any measurements, floor areas (including any total floor area), openings and orientation are approximate. No details are guaranteed and cannot be relied upon for any purpose, and they do not form any agreement. No liability is taken for any error, omission or misstatement. A party must rely upon own inspection(s).
Plan produced using PlanUp.



Energy Efficiency Rating		
	Current	Potential
Very energy efficient - lower running costs		
(92 plus) A		
(81-91) B		85
(69-80) C	72	
(55-68) D		
(39-54) E		
(21-38) F		
(1-20) G		
Not energy efficient - higher running costs		
England & Wales	EU Directive 2002/91/EC	

Agents Note: Whilst every care has been taken to prepare these particulars, they are for guidance purposes only. All measurements are approximate and are for general guidance purposes only and whilst every care has been taken to ensure their accuracy, they should not be relied upon and potential buyers/tenants are advised to recheck the measurements

Head Office Sales
76 Coventry Street
Southam
Warwickshire
CV47 0EA

01926 81 82 88
support@insidehomeslimited.co.uk
www.insidehomeslimited.co.uk