

EDEN MIDCALF
— SALES & LETTINGS —

GOLDEN COUNTRY 01299 402198

£833
Load Street

Worcestershire, DY12 2AP

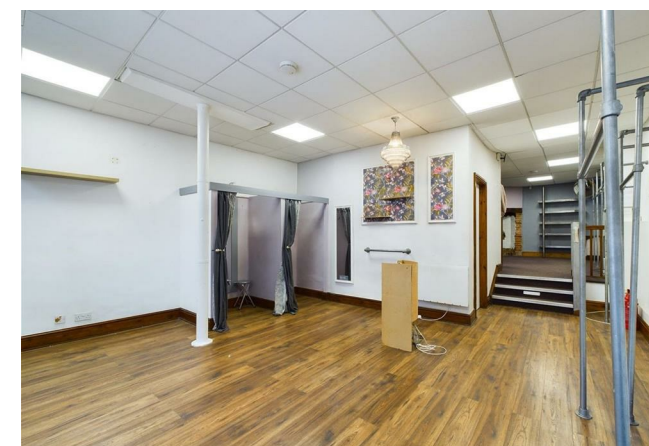
EM
EDEN MIDCALF
TO LET

Wyre Inn Micro

Wyre Inn Microbar



| Energy Efficiency Rating | | |
|---|----------------------------|-----------|
| | Current | Potential |
| Very energy efficient - lower running costs | | |
| (92 plus) A | | |
| (81-91) B | | |
| (69-80) C | | |
| (55-68) D | | |
| (39-54) E | | |
| (21-38) F | | |
| (1-20) G | | |
| Not energy efficient - higher running costs | | |
| England & Wales | EU Directive 2002/91/EC | |



Agents Note: Whilst every care has been taken to prepare these particulars, they are for guidance purposes only. All measurements are approximate and are for general guidance purposes only and whilst every care has been taken to ensure their accuracy, they should not be relied upon and potential buyers/tenants are advised to recheck

EDEN MIDCALF
— SALES & LETTINGS —

42 Hagley Road
Stourbridge
West Midlands
DY8 1QD

01384 443434
lettings@edenmidcalf.co.uk
<https://www.edenmidcalf.co.uk/us/>