

EDEN MIDCALF
— SALES & LETTINGS —



ASKING PRICE

£359,950

Cedar Gardens

Stourbridge, DY7 6BW

PROPERTY SUMMARY

A beautifully improved three bedroom semi-detached dormer property enjoying wonderful countryside views from a delightful cul-de-sac setting in historic Kinver village. Located within easy reach of village amenities, the property offers a versatile, well proportioned and attractively presented layout that is "ready to move into", together with off-road parking for at least three cars, a garage and a pleasant landscaped rear garden, which benefits from an open rear aspect. EPC=D

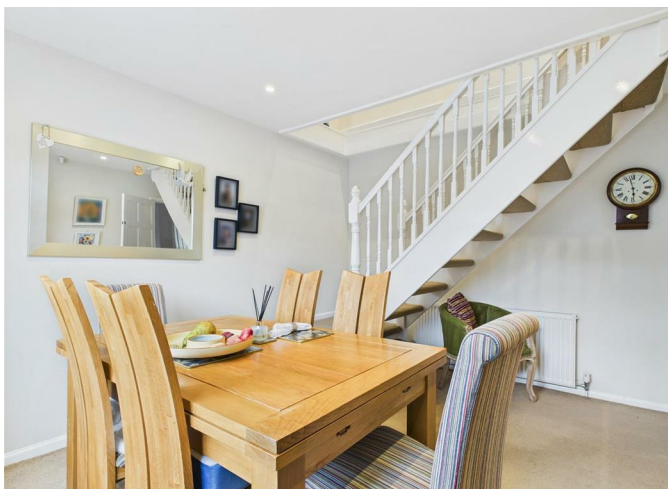
3



2



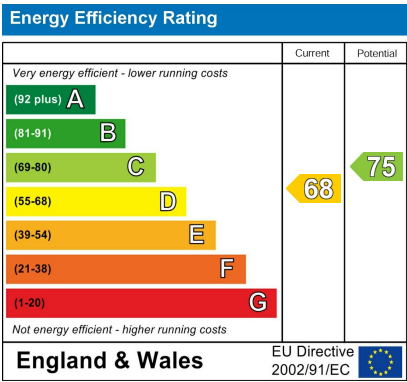
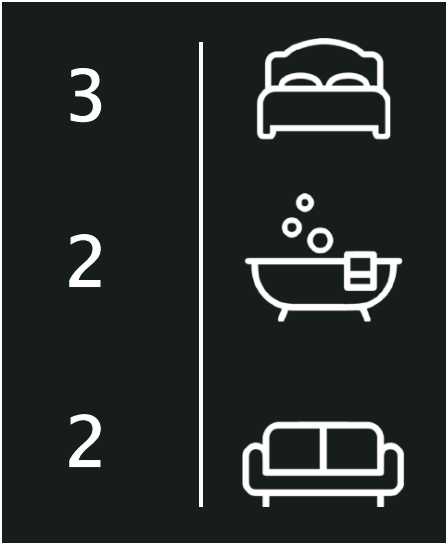
2











Agents Note: Whilst every care has been taken to prepare these particulars, they are for guidance purposes only. All measurements are approximate and are for general guidance purposes only and whilst every care has been taken to ensure their accuracy, they should not be relied upon and potential buyers/tenants are advised to recheck the measurements

EDEN MIDCALF
SALES & LETTINGS

28 High Street
Kinver
DY7 6HF

01384 878000

<https://www.edenmidcalf.co.uk/cor-us/>