



EDEN MIDCALF  
— SALES & LETTINGS —

GUIDE PRICE

**£370,000**

**Dark Lane**

Stourbridge, DY7 6NR



## PROPERTY SUMMARY

An attractively improved two/three bedroom end of terrace cottage enjoying a delightful setting in historic Kinver village, close to the River Stour and beautiful countryside walks. Offering a well proportioned layout including a generous lounge and a spacious dining kitchen, the property also includes allocated off-road parking for three cars and a secluded rear garden, which requires improvement, but offers fantastic potential. Available with no upward chain.

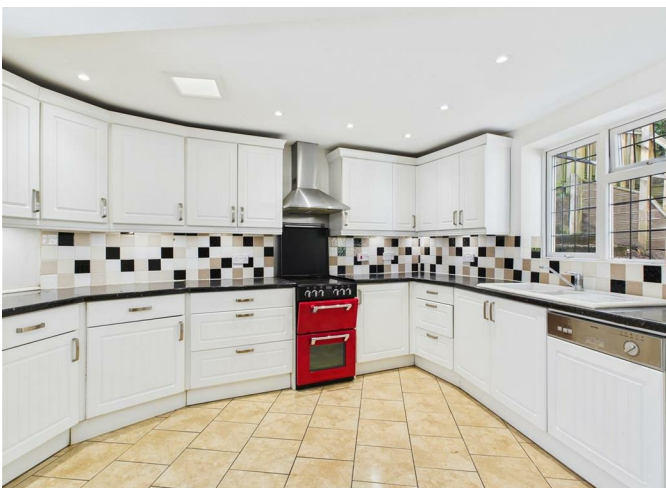
3



1



1







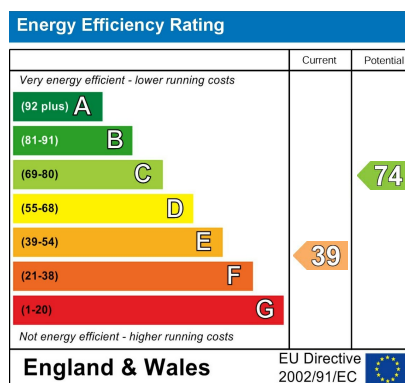
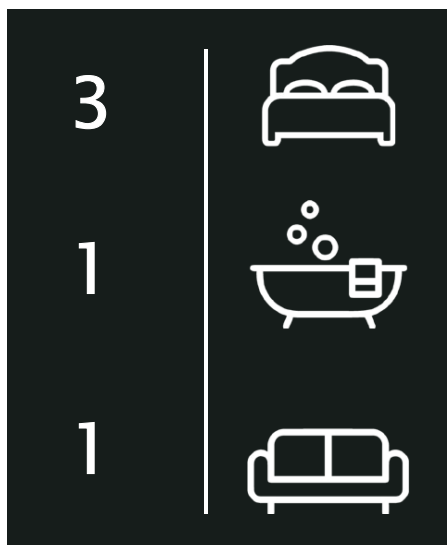
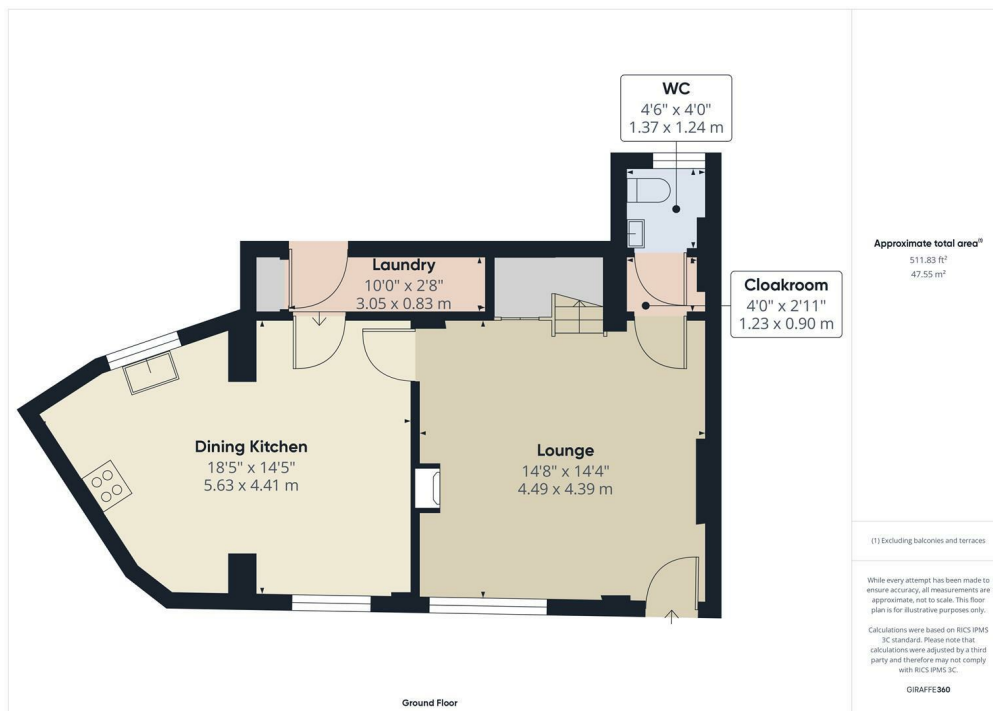












Agents Note: Whilst every care has been taken to prepare these particulars, they are for guidance purposes only. All measurements are approximate and are for general guidance purposes only and whilst every care has been taken to ensure their accuracy, they should not be relied upon and potential buyers/tenants are advised to recheck the measurements

**EDEN MIDCALF**  
SALES & LETTINGS

28 High Street  
Kinver  
DY7 6HF

01384 878000

<https://www.edenmidcalf.co.uk/cor-us/>