



EDEN MIDCALF  
— SALES & LETTINGS —

£925,000  
Hampton Grove

Stourbridge, DY7 6LP



## PROPERTY SUMMARY

A large expensively improved four bedroom detached family house within this prestigious cul-de-sac address in historic Kinver village. Enjoying attractive countryside views and backing directly onto the Staffordshire & Worcestershire Canal, the property offers an impressively spacious and beautifully appointed layout that is “ready to move into”, including a luxurious kitchen/family room, four double bedrooms (master with an en-suite) and a versatile lower ground floor games room/gymnasium, which also has the potential to create a self-contained annex. The property also includes off-road parking for eight cars, a double garage and a large attractively laid out rear garden, including a jetty onto the canal (with mooring rights).

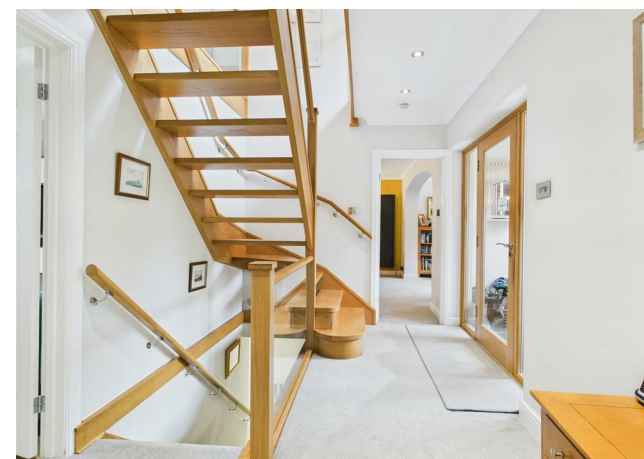
4



2



1



















## LOCAL AUTHORITY

## TENURE

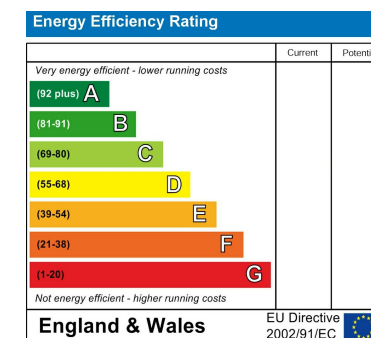
Freehold

## COUNCIL TAX BAND

G

## VIEWINGS

By prior appointment only



Agents Note: Whilst every care has been taken to prepare these particulars, they are for guidance purposes only. All measurements are approximate and are for general guidance purposes only and whilst every care has been taken to ensure their accuracy, they should not be relied upon and potential buyers/tenants are advised to recheck the measurements

**EDEN MIDCALF**  
— SALES & LETTINGS —

28 High Street  
Kinver  
DY7 6HF

01384 878000

<https://www.edenmidcalf.co.uk/contact-us/>