



EDEN MIDCALF
— SALES & LETTINGS —

£297,500
Maple Close
Stourbridge, DY7 6BT

PROPERTY SUMMARY

A two bedroom semi-detached bungalow enjoying a generous corner position in sought after Kinver village. Offering incredible scope for extension and improvement and located within easy reach of Kinver high street and its excellent selection of amenities, the property includes off-road parking for four cars, a garage and a low maintenance rear garden. Available with no upward chain. EPC=D

2



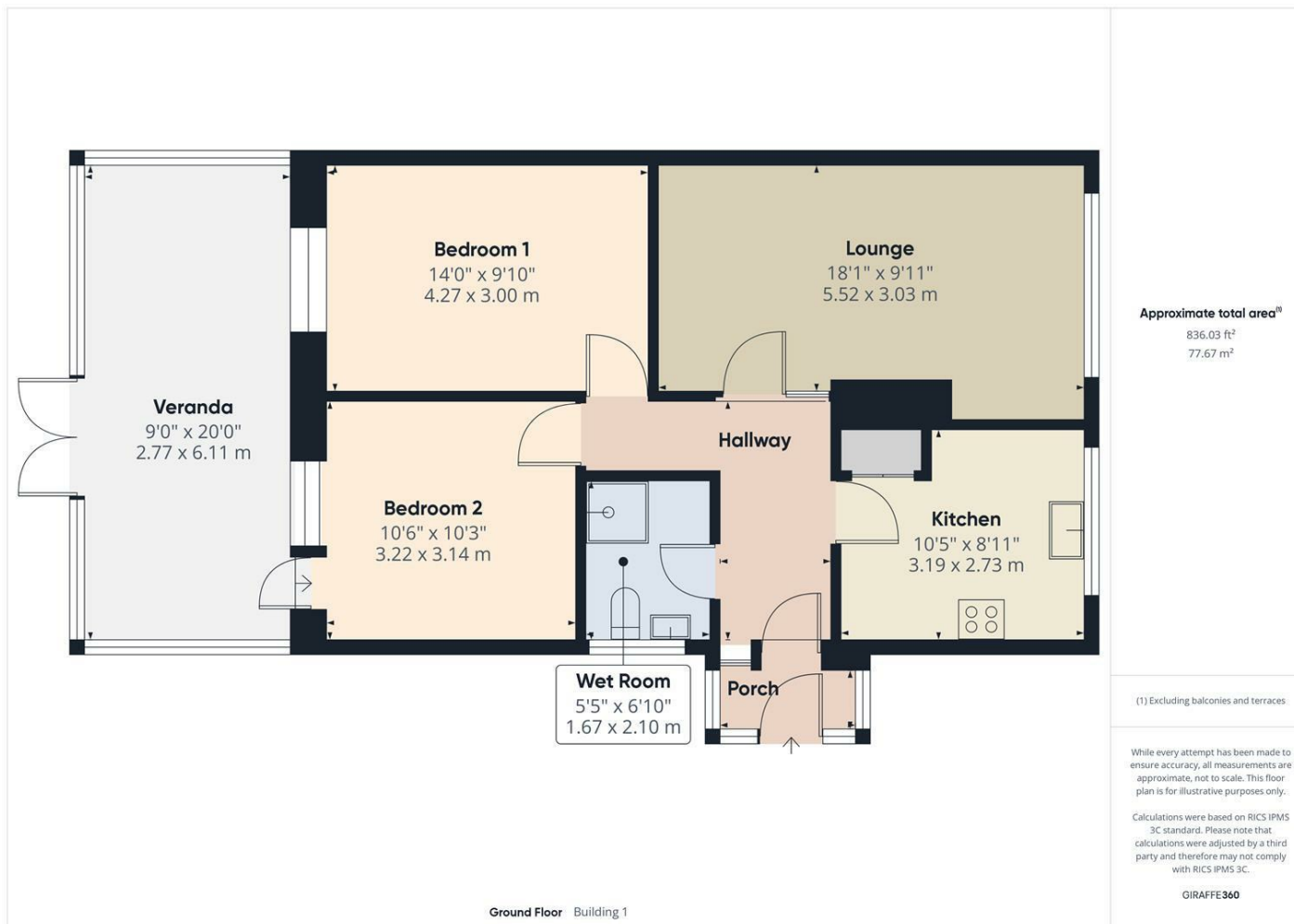
1



1







LOCAL AUTHORITY

TENURE

Freehold

COUNCIL TAX BAND

C

VIEWINGS

By prior appointment only

Energy Efficiency Rating		
	Current	Potential
Very energy efficient - lower running costs		
(92 plus) A		87
(81-91) B		
(69-80) C		
(55-68) D	62	
(39-54) E		
(21-38) F		
(1-20) G		
Not energy efficient - higher running costs		
England & Wales	EU Directive 2002/91/EC	

Agents Note: Whilst every care has been taken to prepare these particulars, they are for guidance purposes only. All measurements are approximate and are for general guidance purposes only and whilst every care has been taken to ensure their accuracy, they should not be relied upon and potential buyers/tenants are advised to recheck the measurements.

EDEN MIDCALF
— SALES & LETTINGS —

28 High Street
Kinver
DY7 6HF

01384 878000

<https://www.edenmidcalf.co.uk/us/>