



EDEN MIDCALF
— SALES & LETTINGS —

£119,950
Load Street
Bewdley, DY12 2AS

PROPERTY SUMMARY

A beautifully improved, top floor, one bedroom apartment set within a Grade II listed building in the heart of Bewdley. The property overlooks Bewdley town and St Annes Church and offers a well proportioned and attractively appointed layout that is "ready to move into". The layout includes a spacious open-plan lounge/kitchen and retains many original features, including vaulted ceilings with exposed timber beams.

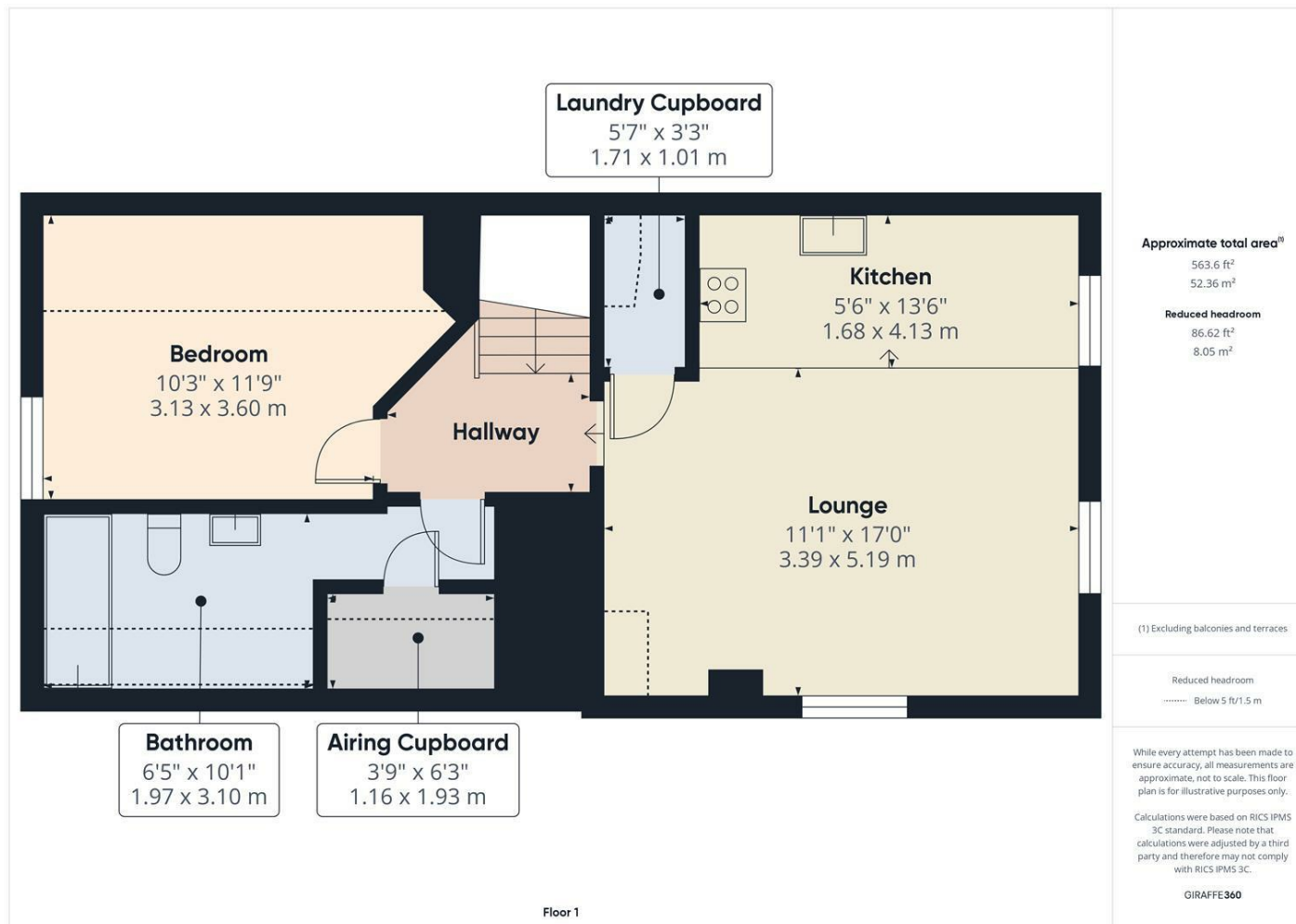
1 
1 
nuk 









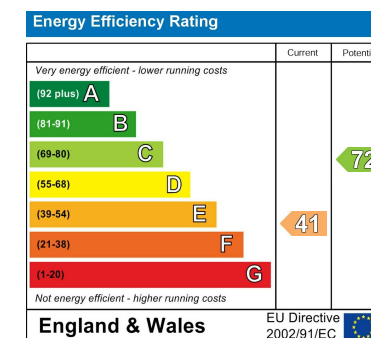


LOCAL AUTHORITY
Wyre Forest District Council

TENURE
Leasehold

COUNCIL TAX BAND
A

VIEWINGS
By prior appointment only



Agents Note: Whilst every care has been taken to prepare these particulars, they are for guidance purposes only. All measurements are approximate and are for general guidance purposes only and whilst every care has been taken to ensure their accuracy, they should not be relied upon and potential buyers/tenants are advised to recheck the measurements

EDEN MIDCALF
SALES & LETTINGS

5 Load Street
Bewdley
DY12 2AF

01299 402392
wyreforest@edenmidcalf.co.uk
<https://www.edenmidcalf.co.uk/contact-us/>