

A photograph of a living room interior. The room features a green tufted sofa with three colorful patterned cushions. A large red and white patterned rug is on the floor. A white fireplace with a black metal grate is on the left, with a large TV mounted above it. A wooden bookshelf is in the background, and a window with a blue blind is on the right. The ceiling has exposed wooden beams. The walls are painted in a mix of green and yellow.

EDEN MIDCALF
— SALES & LETTINGS —

OFFERS IN THE REGION OF

£165,000

Load Street

Bewdley, DY12 2AP

PROPERTY SUMMARY

This charming Grade II listed apartment is arranged over two floors and situated in the heart of Bewdley town centre. The versatile and beautifully improved accommodation retains much of its original character whilst complemented by attractive modern appointments. The apartment enjoys the benefit of a useful ground floor store room and a shared resident's parking area, which is accessed via Dog Lane with wrought iron gates opening to a pathway which leads to a communal front entrance.

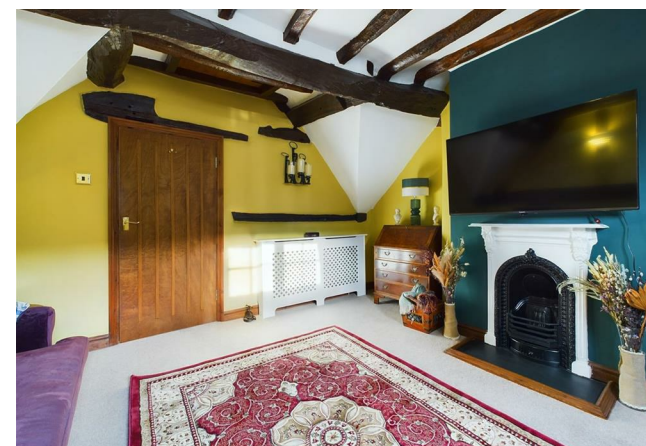
2



1

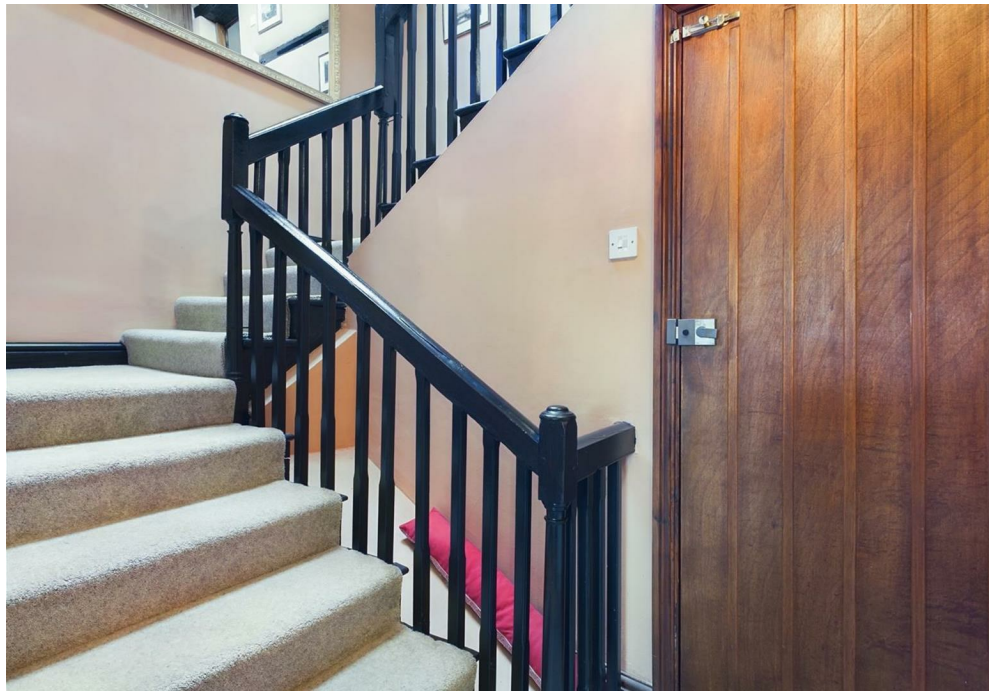


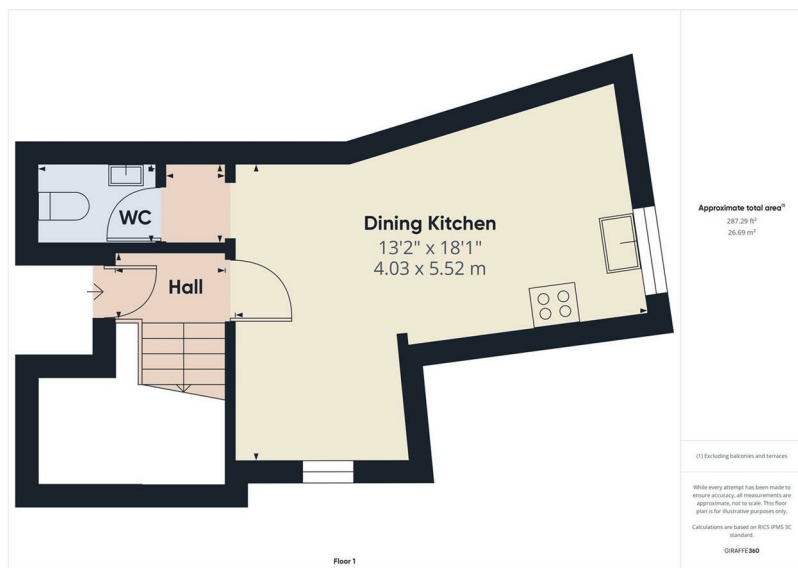
1









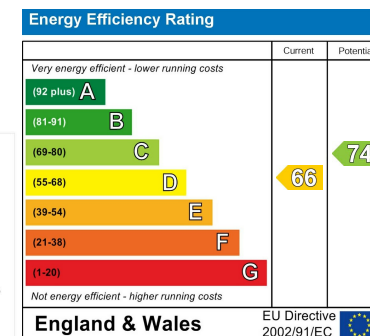


LOCAL AUTHORITY
Wyre Forest District Council

TENURE
Leasehold

COUNCIL TAX BAND
A

VIEWINGS
By prior appointment only



Agents Note: Whilst every care has been taken to prepare these particulars, they are for guidance purposes only. All measurements are approximate and are for general guidance purposes only and whilst every care has been taken to ensure their accuracy, they should not be relied upon and potential buyers/tenants are advised to recheck the measurements

EDEN MIDCALF
— SALES & LETTINGS —

5 Load Street
Bewdley
DY12 2AF

01299 402392
wyreforest@edenmidcalf.co.uk
<https://www.edenmidcalf.co.uk/contact-us/>