



EDEN MIDCALF  
— SALES & LETTINGS —

£239,950  
Northwood Lane

Bewdley, DY12 1AS



## PROPERTY SUMMARY

A wonderful, two bedroom chalet bungalow set within a very tranquil setting with stunning countryside views. Located close to the Severn Valley Railway and the River Severn, the property has been beautifully renovated by the current owners to offer a luxuriously appointed layout that is "ready to move into". The bungalow occupies a generous plot including off-road parking, landscaped gardens (including a pergola bar), a home office (with lighting and power) and a large shed/summerhouse (with lighting and power). CASH PURCHASE ONLY.

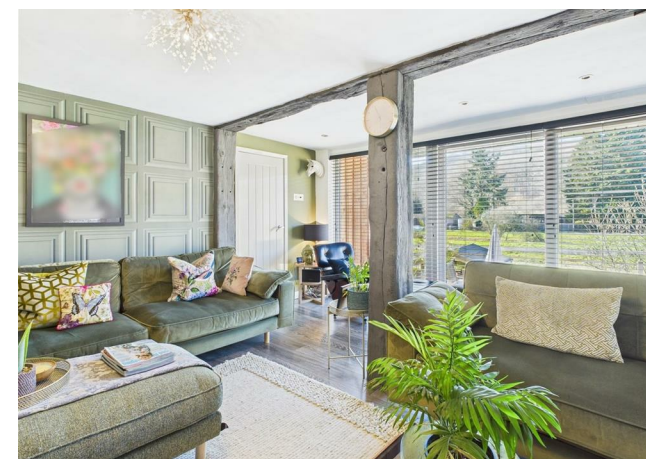
2



1



1







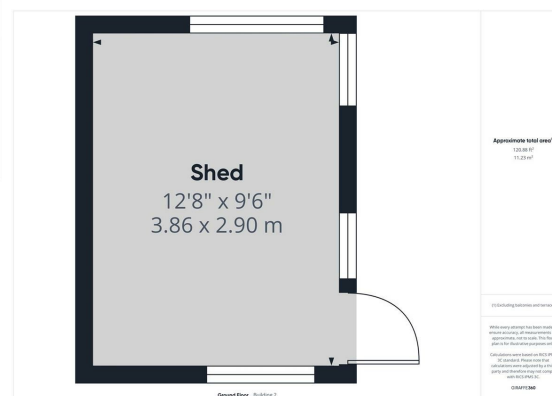
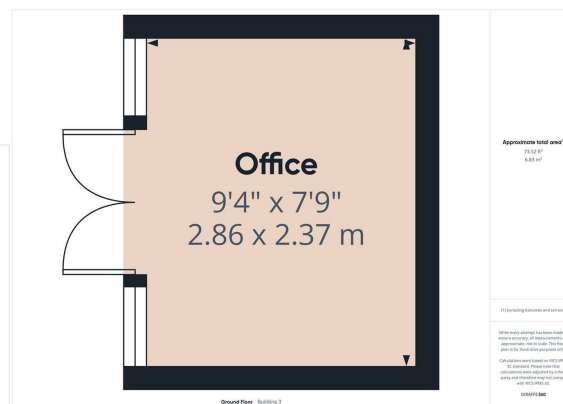
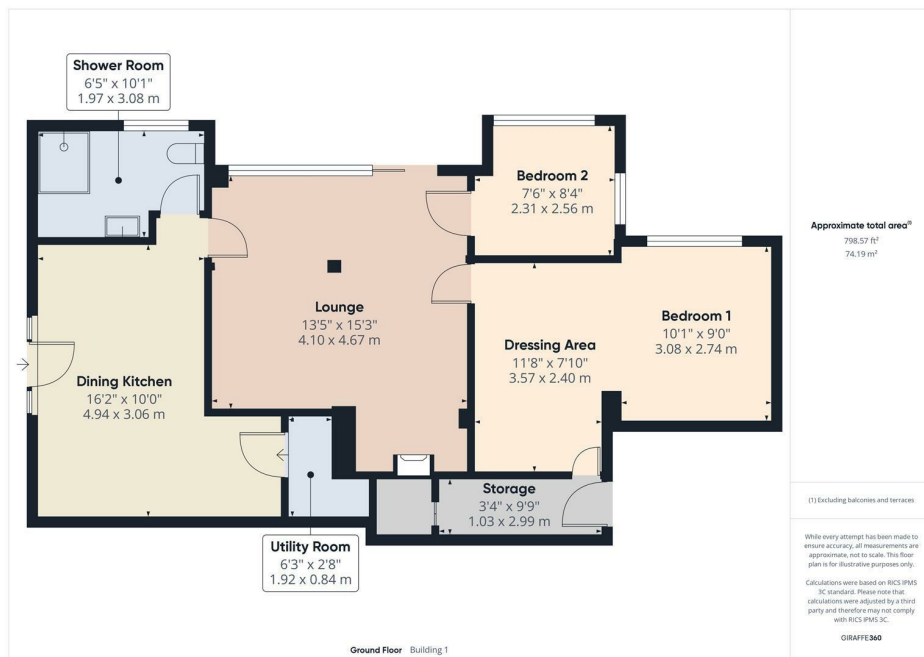










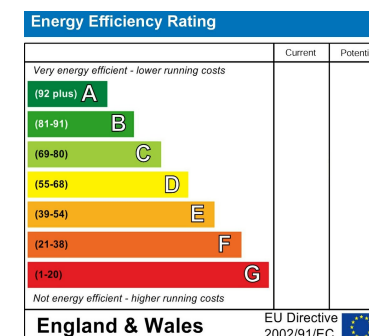


**LOCAL AUTHORITY**  
Wyre Forest District Council

**TENURE**  
Leasehold

**COUNCIL TAX BAND**  
A

**VIEWINGS**  
By prior appointment only



Agents Note: Whilst every care has been taken to prepare these particulars, they are for guidance purposes only. All measurements are approximate and are for general guidance purposes only and whilst every care has been taken to ensure their accuracy, they should not be relied upon and potential buyers/tenants are advised to recheck the measurements

**EDEN MIDCALF**  
— SALES & LETTINGS —

5 Load Street  
Bewdley  
DY12 2AF

01299 402392  
wyreforest@edenmidcalf.co.uk  
<https://www.edenmidcalf.co.uk/contact-us/>