

EDEN MIDCALF
— SALES & LETTINGS —

£339,950
Albrighton Drive
Worcestershire, DY10 2NX

PROPERTY SUMMARY

A beautifully appointed three bedroom detached family house constructed in 2019 and enjoying a pleasant cul-de-sac setting on the countryside fringe of Kidderminster. Well placed within easy reach of town amenities, the property offers a generously proportioned and attractively presented layout that is "ready to move into", including a dining kitchen with integrated appliances and three good sized bedrooms (master with an en-suite shower room). The property also includes off-road parking for two cars, a garage and an attractively landscaped low maintenance rear garden.

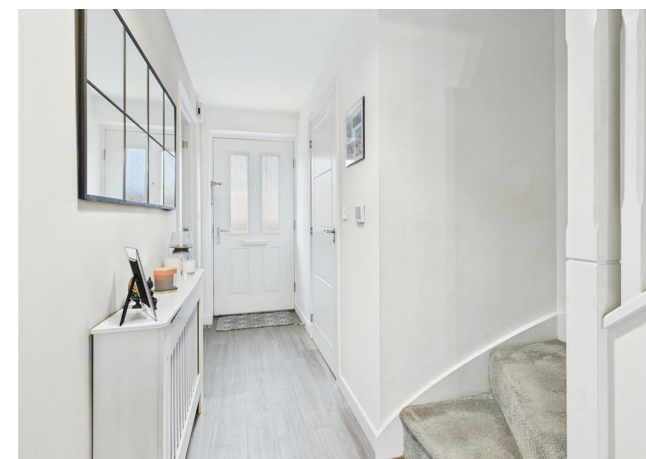
3

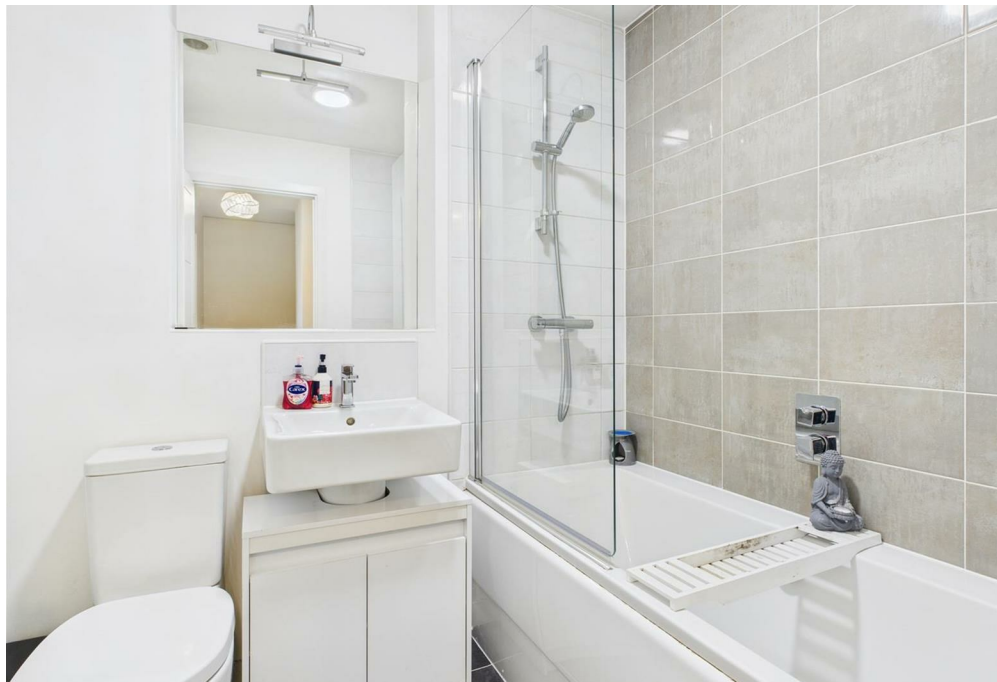


2



1





LOCAL AUTHORITY

TENURE

Freehold

COUNCIL TAX BAND

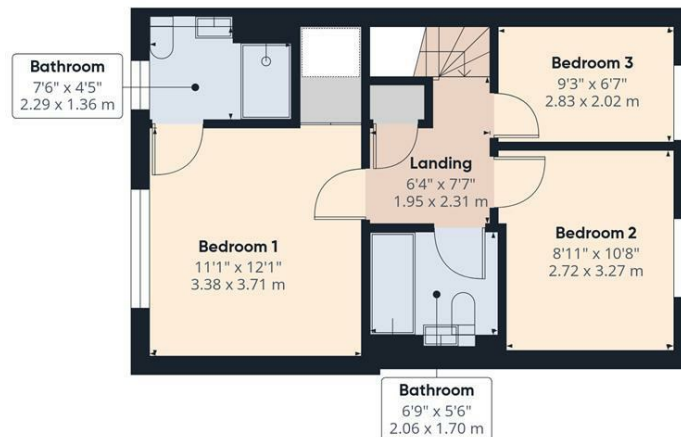
D

VIEWINGS

By prior appointment only



Ground Floor Building 1



Floor 1 Building 1

Approximate total area⁽¹⁾
884 ft²
82.1 m²

(1) Excluding balconies and terraces

Calculations reference the RICS IPMS 3C standard. Measurements are approximate and not to scale. This floor plan is intended for illustration only.

GIRAFFE360

Energy Efficiency Rating		
	Current	Potential
Very energy efficient - lower running costs		
(92 plus) A		
(81-91) B		
(69-80) C		
(55-68) D		
(39-54) E		
(21-38) F		
(1-20) G		
Not energy efficient - higher running costs		
England & Wales	EU Directive 2002/91/EC	

Agents Note: Whilst every care has been taken to prepare these particulars, they are for guidance purposes only. All measurements are approximate and are for general guidance purposes only and whilst every care has been taken to ensure their accuracy, they should not be relied upon and potential buyers/tenants are advised to recheck the measurements.

EDEN MIDCALF
— SALES & LETTINGS —

5 Load Street
Bewdley
DY12 2AF

01299 402392
wyreforest@edenmidcalf.co.uk
<https://www.edenmidcalf.co.uk/us/>