



EDEN MIDCALF
— SALES & LETTINGS —

AUCTION GUIDE

£400,000

Lower Park

Worcestershire, DY12 2DP

PROPERTY SUMMARY

FOR SALE BY CONDITIONAL AUCTION: Bank House is a large Victorian house with six bedrooms and full of character, located within walking distance of the town's amenities, Jubilee Gardens and the River Severn. Offering an incredibly generous layout including lovely high ceilings and arranged over three floors, the property provides immense further potential and retains much of its original character and charm, including the original sash / stained glass windows, a stone staircase, tiled floorings, feature fireplaces and doors. To the rear, the property enjoys a generous and beautifully laid out garden and there is also a double garage, which is accessed via neighbouring Lax Lane.

6

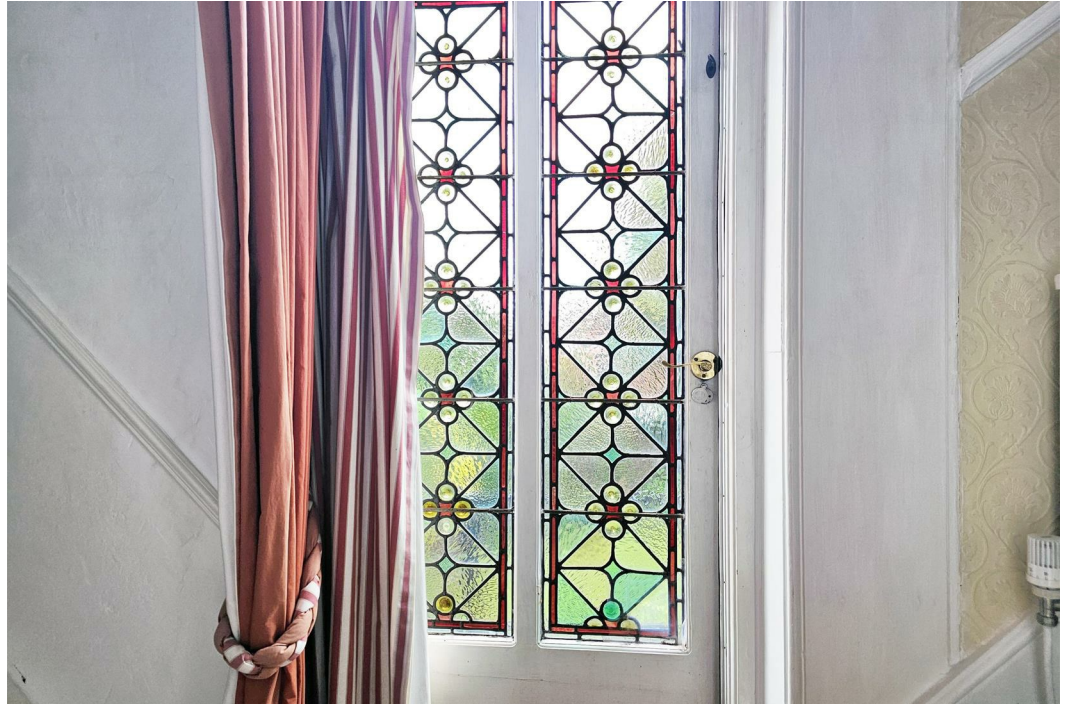


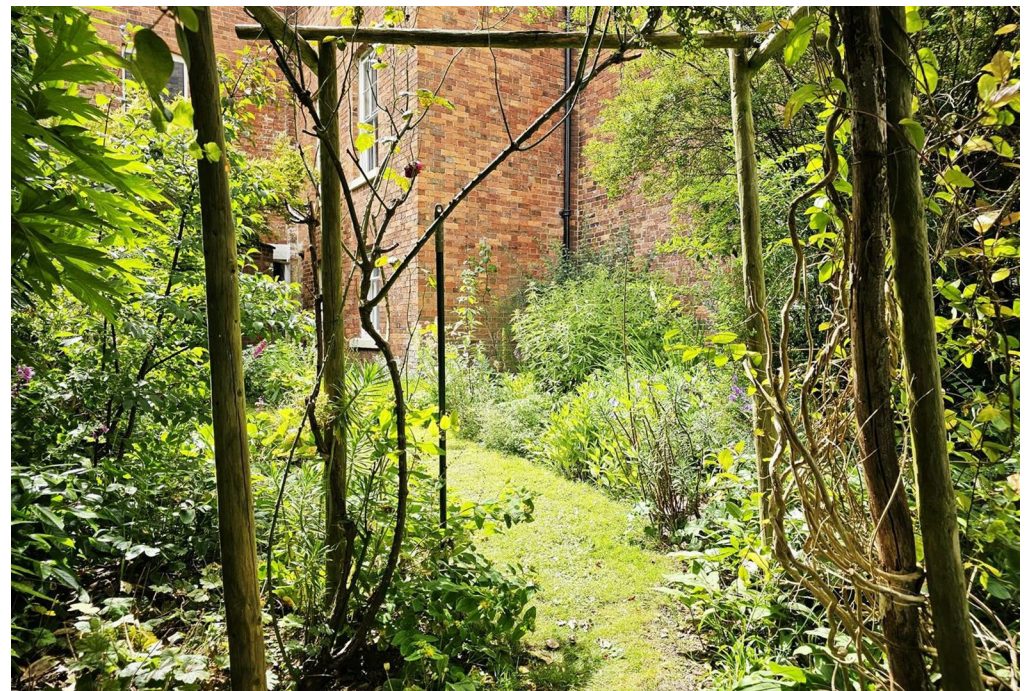
3



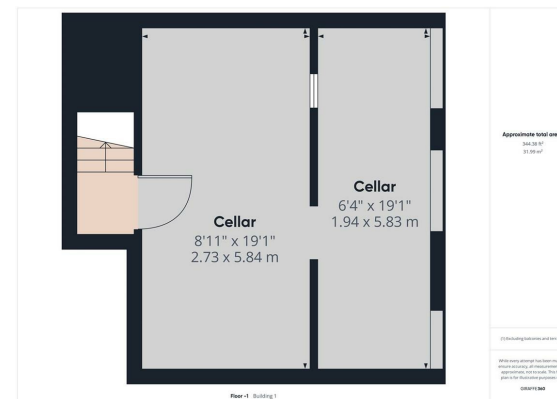
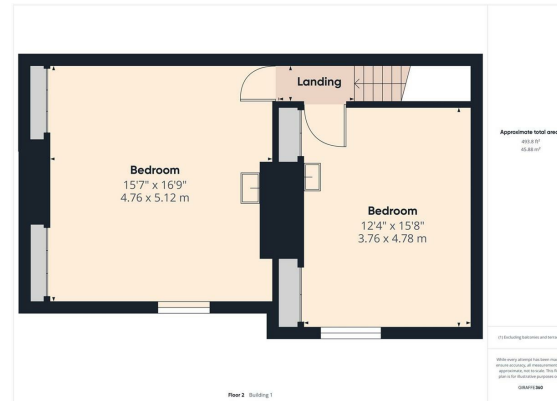
2









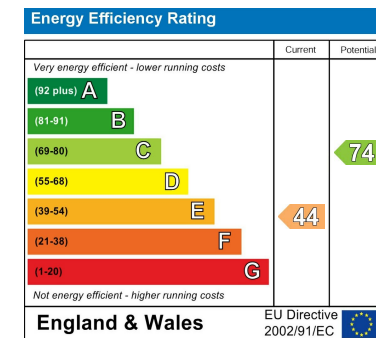


LOCAL AUTHORITY
Wyre Forest District Council

TENURE
Freehold

COUNCIL TAX BAND
F

VIEWINGS
By prior appointment only



Agents Note: Whilst every care has been taken to prepare these particulars, they are for guidance purposes only. All measurements are approximate and are for general guidance purposes only and whilst every care has been taken to ensure their accuracy, they should not be relied upon and potential buyers/tenants are advised to recheck the measurements

EDEN MIDCALF
— SALES & LETTINGS —

5 Load Street
Bewdley
DY12 2AF

01299 402392
wyreforest@edenmidcalf.co.uk
<https://www.edenmidcalf.co.uk/contact-us/>