

EDEN MIDCALF  
— SALES & LETTINGS —

£850  
Wyre Hill

Bewdley, DY12 2UE



## PROPERTY SUMMARY

A Grade II listed, extended two-bedroom end-of-terrace house, ideally located in the popular town of Bewdley, just a short walk from local amenities. Recently refurbished, the property is well presenting, combining modern convenience with period-style charm, including exposed timber beams and wooden windows. The property offers double glazing throughout, a newly fitted dining kitchen with integrated appliances, a spacious living room, two bedrooms, a modern bathroom, gas central heating and an attractive rear garden with superb views over Bewdley and the surrounding countryside.

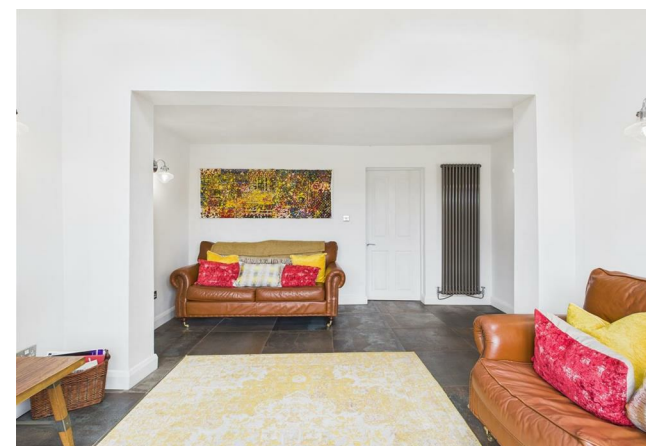
2



1



1







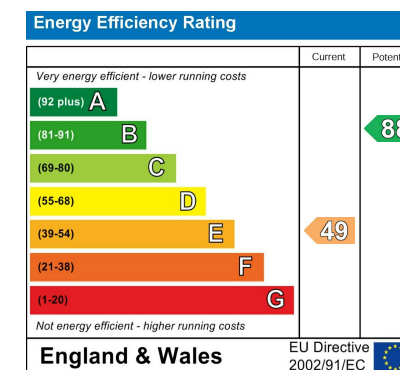


**LOCAL AUTHORITY**  
Wyre Forest District Council

**TENURE**

**COUNCIL TAX BAND**  
C

**VIEWINGS**  
By prior appointment only



Agents Note: Whilst every care has been taken to prepare these particulars, they are for guidance purposes only. All measurements are approximate and are for general guidance purposes only and whilst every care has been taken to ensure their accuracy, they should not be relied upon and potential buyers/tenants are advised to recheck the measurements.

**EDEN MIDCALF**  
SALES & LETTINGS

5 Load Street  
Bewdley  
DY12 2AF

01299 402392  
wyreforest@edenmidcalf.co.uk  
<https://www.edenmidcalf.co.uk/>  
us/