



EDEN MIDCALF
— SALES & LETTINGS —

£299,500
Wyre Hill

Bewdley, DY12 2UE

PROPERTY SUMMARY

Available with no upward chain, this wonderful Grade II listed three bedroom terraced cottage is located within walking distance of the centre of Bewdley and its excellent amenities. The cottage offers a beautifully presented layout, which retains much of its original character and charm, together with an attractively landscaped rear garden, including a substantial shed / workshop (currently used as a gymnasium).

3



1



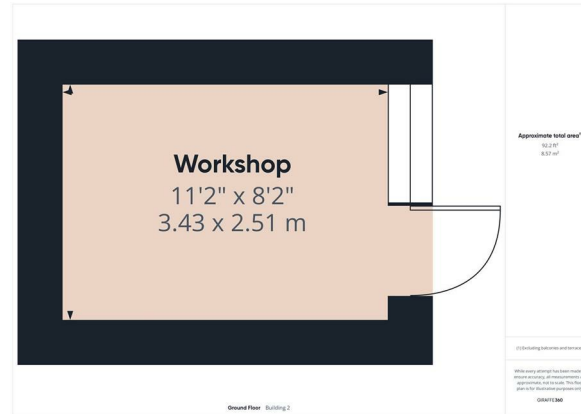
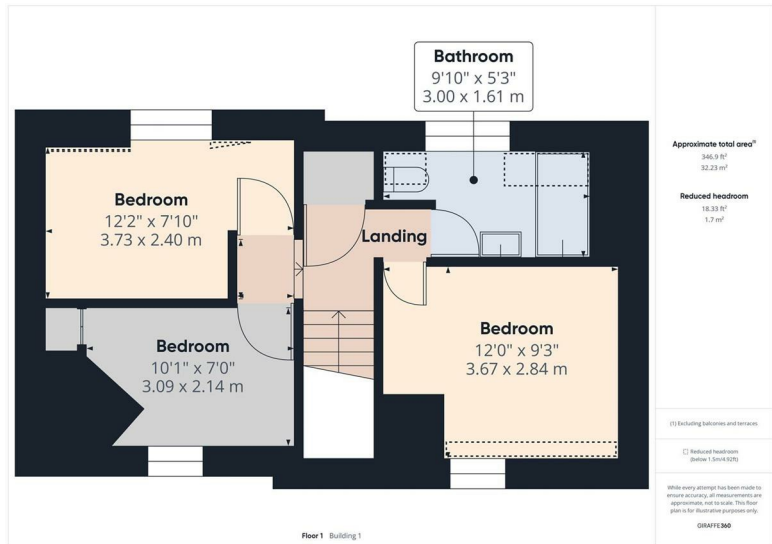
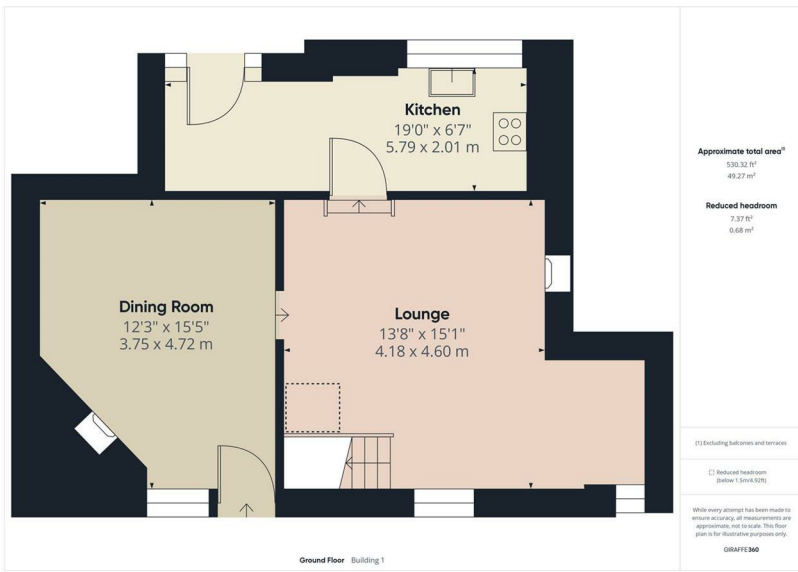
2









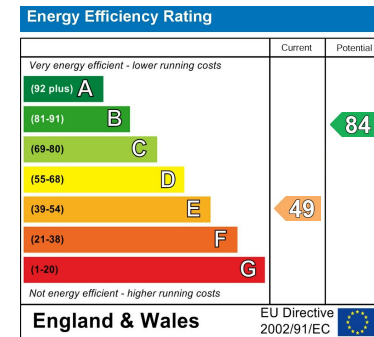


LOCAL AUTHORITY
Wyre Forest District Council

TENURE
Freehold

COUNCIL TAX BAND
D

VIEWINGS
By prior appointment only



Agents Note: Whilst every care has been taken to prepare these particulars, they are for guidance purposes only. All measurements are approximate and are for general guidance purposes only and whilst every care has been taken to ensure their accuracy, they should not be relied upon and potential buyers/tenants are advised to recheck the measurements

EDEN MIDCALF
SALES & LETTINGS

5 Load Street
Bewdley
DY12 2AF

01299 402392
wyreforest@edenmidcalf.co.uk
<https://www.edenmidcalf.co.uk/contact-us/>