



EDEN MIDCALF  
— SALES & LETTINGS —

£300,000  
Lax Lane  
Bewdley, DY12 2DZ



## PROPERTY SUMMARY

A lovely Grade II listed two bedroom cottage overlooking the River Severn within this sought after address, just a short walk from the centre of Bewdley town. Offering an improved and generously proportioned layout retaining much of its original character and complemented by attractive modern appointments. The property also includes shared resident off-road parking, a garage and stunning communal gardens. Available with no upward chain.

2



1



1







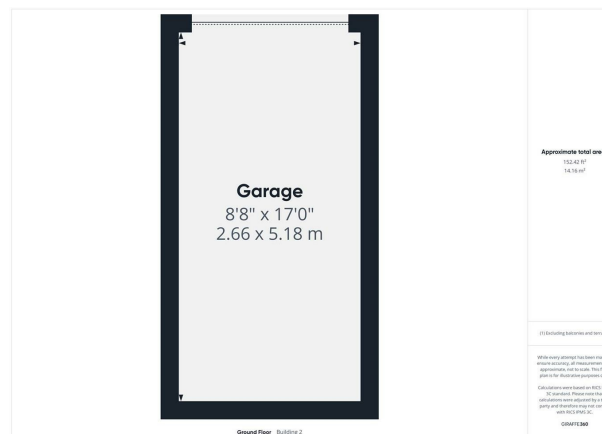
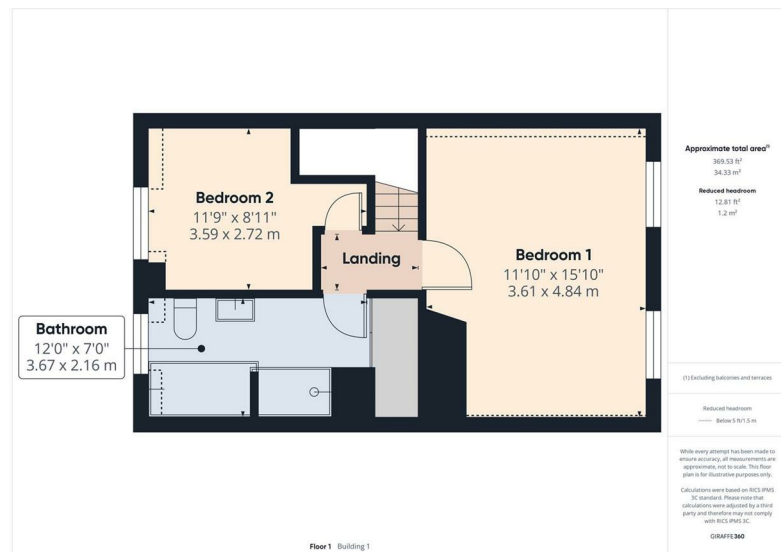










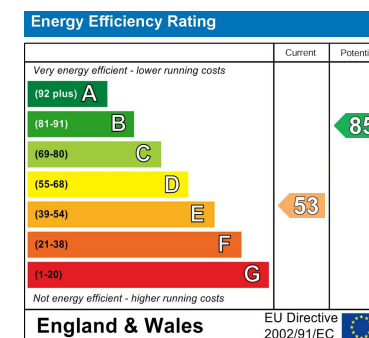


**LOCAL AUTHORITY**  
Wyre Forest District Council

**TENURE**  
Freehold

**COUNCIL TAX BAND**  
C

**VIEWINGS**  
By prior appointment only



Agents Note: Whilst every care has been taken to prepare these particulars, they are for guidance purposes only. All measurements are approximate and are for general guidance purposes only and whilst every care has been taken to ensure their accuracy, they should not be relied upon and potential buyers/tenants are advised to recheck the measurements

**EDEN MIDCALF**  
— SALES & LETTINGS —

5 Load Street  
Bewdley  
DY12 2AF

01299 402392  
wyreforest@edenmidcalf.co.uk  
<https://www.edenmidcalf.co.uk/contact-us/>