

EDEN MIDCALF  
— SALES & LETTINGS —

£283,950  
Hawthorn Crescent

Bewdley, DY12 2JE

GREENBANK ROAD

EM  
EDEN MIDCALF  
FOR SALE





## PROPERTY SUMMARY

Available with no upward chain, this extended and attractively improved, three bedroom, semi-detached family house occupies a pleasant corner setting in sought after Bewdley. Enjoying delightful rear views towards nearby countryside, the property offers a well proportioned layout that is "ready to move into", plus off-road parking, a garage and an attractive patio/lawn rear garden, which benefits from an open rear aspect.

3



1



2







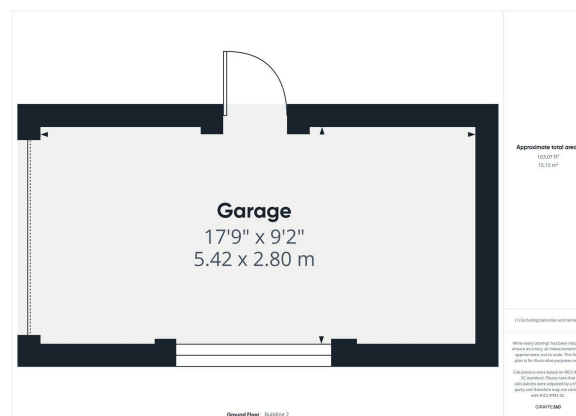
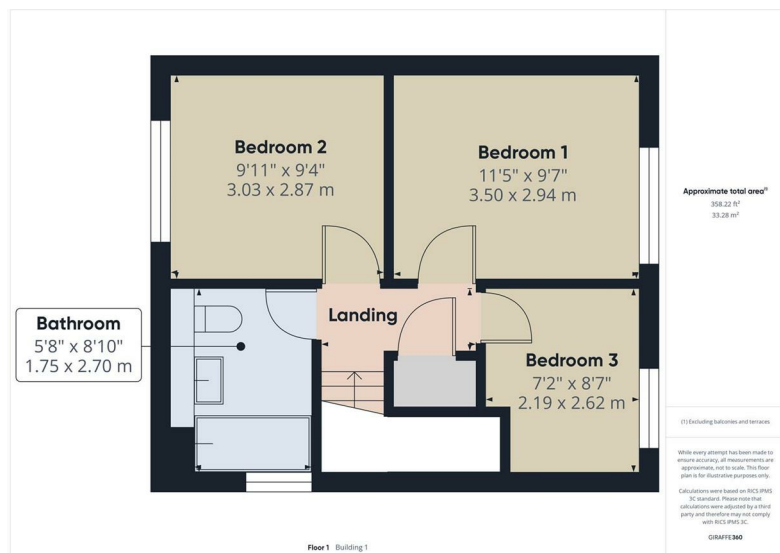
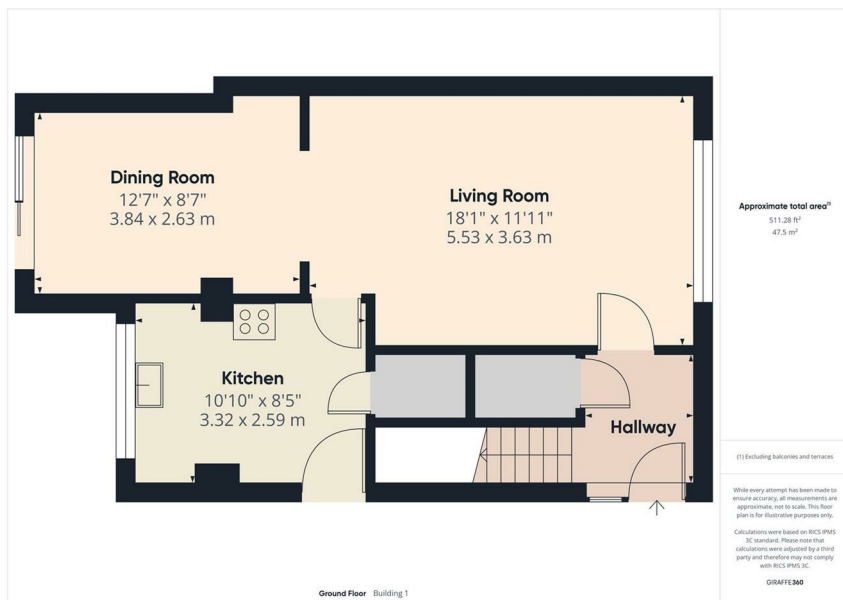










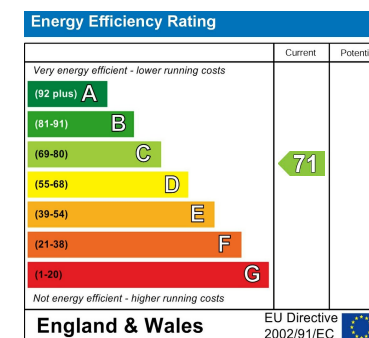


**LOCAL AUTHORITY**  
Wyre Forest District Council

**TENURE**  
Freehold

**COUNCIL TAX BAND**  
B

**VIEWINGS**  
By prior appointment only



Agents Note: Whilst every care has been taken to prepare these particulars, they are for guidance purposes only. All measurements are approximate and are for general guidance purposes only and whilst every care has been taken to ensure their accuracy, they should not be relied upon and potential buyers/tenants are advised to recheck the measurements

**EDEN MIDCALF**  
— SALES & LETTINGS —

5 Load Street  
Bewdley  
DY12 2AF

01299 402392  
wyreforest@edenmidcalf.co.uk  
<https://www.edenmidcalf.co.uk/contact-us/>