

A photograph of a two-story red brick house with a bay window and a conservatory. The house has a dark roof and a small wooden shed in the garden. A brick wall runs along the left side of the property. The conservatory is made of brick and has a glass roof. The garden is paved with bricks and has a lawn area. There are several potted plants and a raised garden bed in the foreground. The sky is blue and there are trees in the background.

EDEN MIDCALF
— SALES & LETTINGS —

£420,000
High Street
Worcestershire, DY12 2DJ

PROPERTY SUMMARY

Marith House is a wonderful, much improved period semi-detached property enjoying a secluded setting, just off of High Street in the heart of Bewdley town. Retaining much of its original character and charm, the property has been thoughtfully combined with modern appointments and also boasts a beautiful rear garden.

2



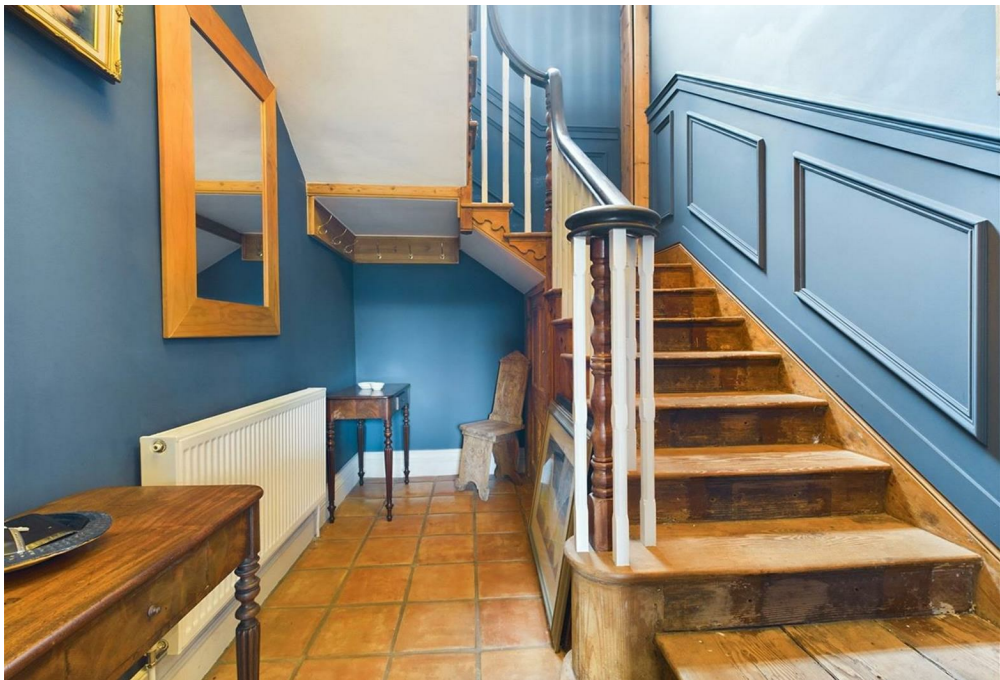
1

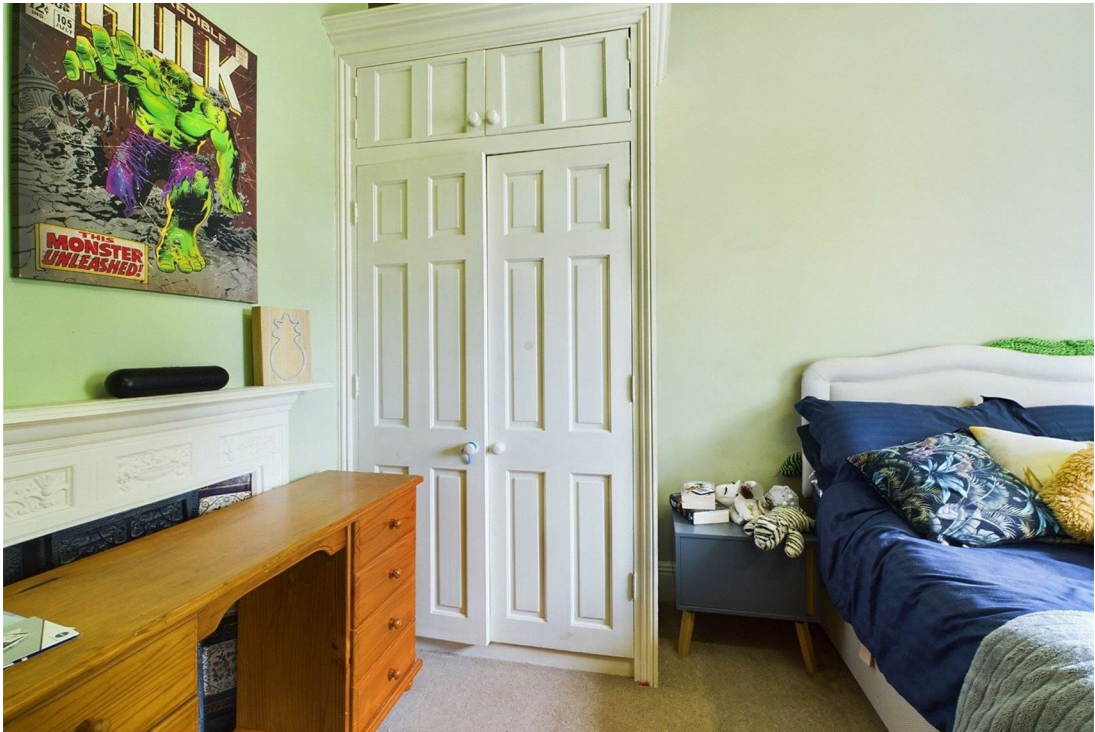


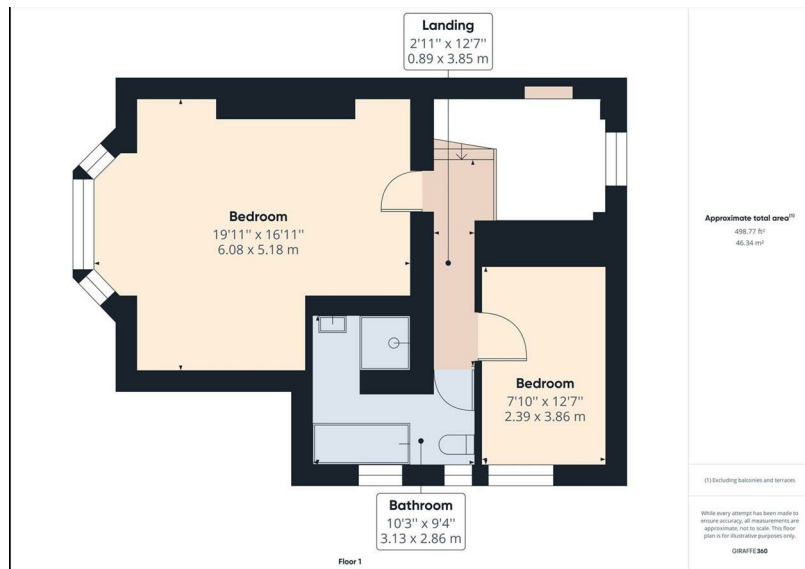
2









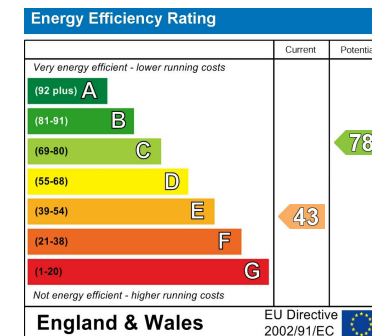


LOCAL AUTHORITY
Wyre Forest District Council

TENURE
Freehold

COUNCIL TAX BAND
F

VIEWINGS
By prior appointment only



Agents Note: Whilst every care has been taken to prepare these particulars, they are for guidance purposes only. All measurements are approximate and are for general guidance purposes only and whilst every care has been taken to ensure their accuracy, they should not be relied upon and potential buyers/tenants are advised to recheck the measurements

EDEN MIDCALF
— SALES & LETTINGS —

5 Load Street
Bewdley
DY12 2AF

01299 402392
wyreforest@edenmidcalf.co.uk
<https://www.edenmidcalf.co.uk/contact-us/>