

A photograph of a two-story brick house with a gravel patio and garden. The house has a red brick exterior, white window frames, and a tiled roof with two chimneys. A black metal fence runs along the back of the property. The garden is filled with various plants, including a large evergreen tree on the left and several potted plants. The patio area is covered in gravel and has some outdoor furniture, including a table and chairs. The sky is blue with some light clouds.

EDEN MIDCALF
— SALES & LETTINGS —

£225,000
Park Lane
Bewdley, DY12 2ER

PROPERTY SUMMARY

A beautifully appointed two bedroom apartment situated on the top floor of this attractive Grade II listed building close to the heart of Bewdley town. The property offers a generous layout that is “ready to move into”, together with designated parking and a landscaped communal garden, which enjoys delightful views. Located just a short walk from shops/amenities. No upward chain.

2

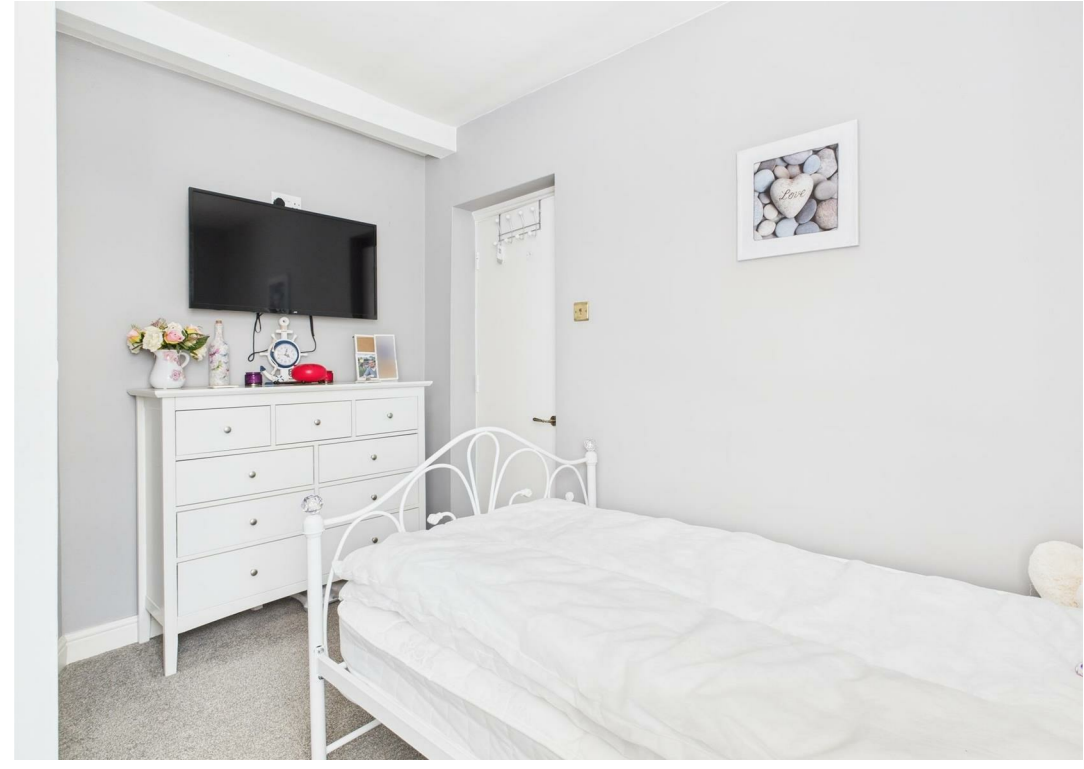


1



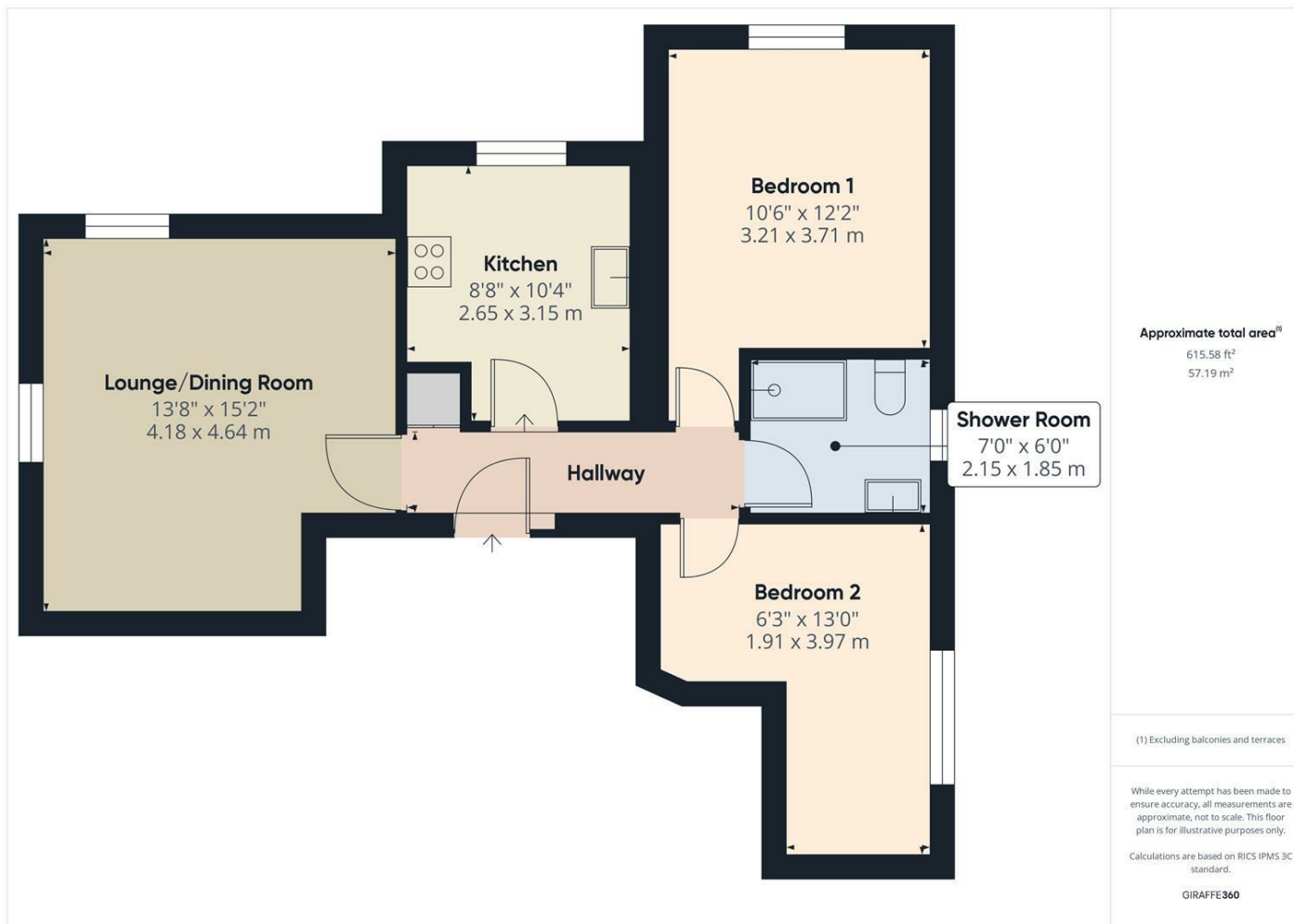
1









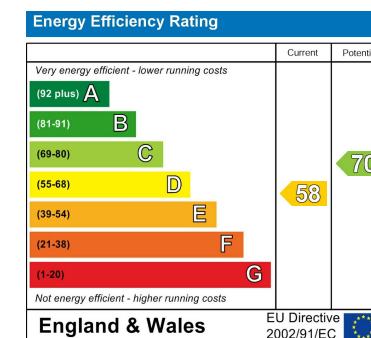


LOCAL AUTHORITY
Wyre Forest District Council

TENURE
Share of Freehold

COUNCIL TAX BAND
C

VIEWINGS
By prior appointment only



Agents Note: Whilst every care has been taken to prepare these particulars, they are for guidance purposes only. All measurements are approximate and are for general guidance purposes only and whilst every care has been taken to ensure their accuracy, they should not be relied upon and potential buyers/tenants are advised to recheck the measurements

EDEN MIDCALF
— SALES & LETTINGS —

5 Load Street
Bewdley
DY12 2AF

01299 402392
wyreforest@edenmidcalf.co.uk
<https://www.edenmidcalf.co.uk/contact-us/>