

EDEN MIDCALF
— SALES & LETTINGS —

£249,950
Queensway
Bewdley, DY12 1ES

PROPERTY SUMMARY

An enlarged and attractively improved three bedroom end of terrace family house in sought after Bewdley town. Enjoying an open rear outlook onto an attractive green area and offering a generously proportioned layout that is "ready to move into", including a dining kitchen with integrated appliances and three double bedrooms, the master of which forms a loft converted room with an en-suite shower room. The property also includes off-road parking for three cars and an excellent sized rear garden. Available with no upward chain.

3



2



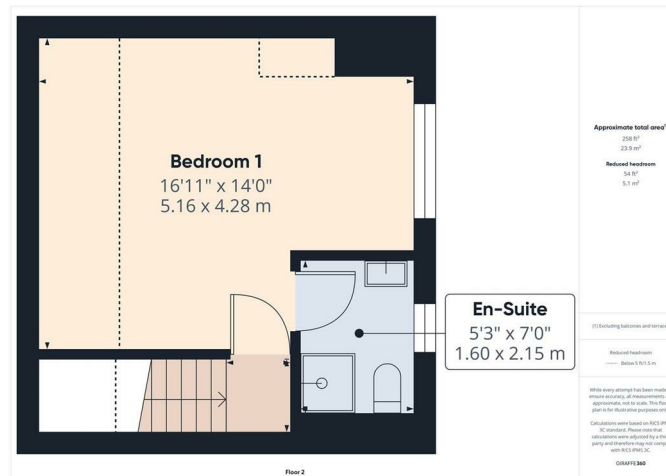
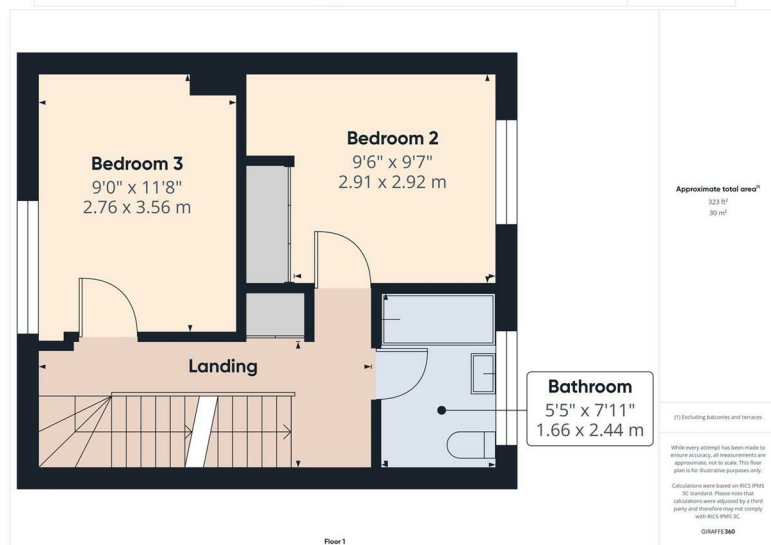
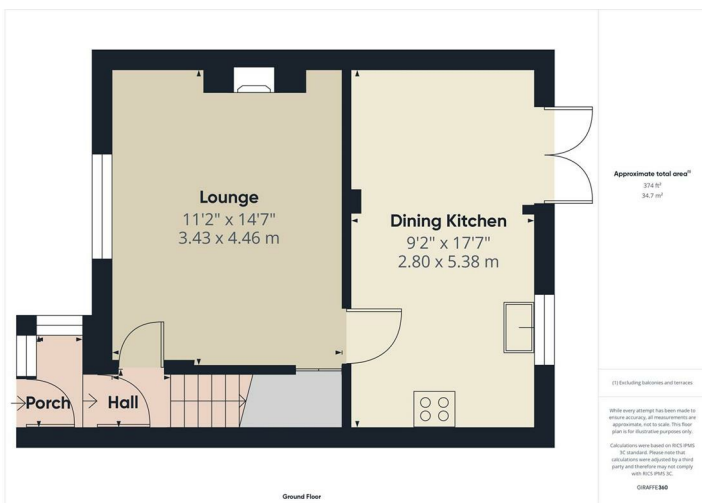
1









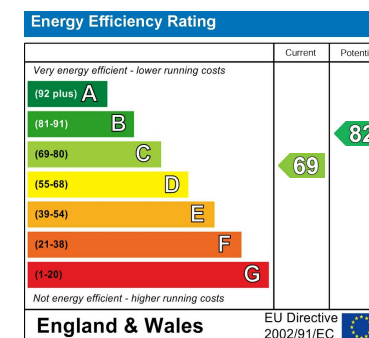


LOCAL AUTHORITY
Wyre Forest District Council

TENURE
Freehold

COUNCIL TAX BAND
A

VIEWINGS
By prior appointment only



Agents Note: Whilst every care has been taken to prepare these particulars, they are for guidance purposes only. All measurements are approximate and are for general guidance purposes only and whilst every care has been taken to ensure their accuracy, they should not be relied upon and potential buyers/tenants are advised to recheck the measurements

EDEN MIDCALF
SALES & LETTINGS

5 Load Street
Bewdley
DY12 2AF

01299 402392
wyreforest@edenmidcalf.co.uk
<https://www.edenmidcalf.co.uk/contact-us/>