

EDEN MIDCALF  
— SALES & LETTINGS —

£350,000  
Burltons Terrace, High

Sewdley, DY12 2DL



## PROPERTY SUMMARY

A beautifully improved three bedroom period end of terrace house with off-road parking for two cars, pleasantly situated in this small cul-de-sac, just off High Street in the picturesque town of Bewdley. Located within walking distance of town amenities and the delightful grounds of Jubilee Gardens, the property offers a well proportioned and immaculately presented layout that is "ready to move into". The property also includes a wonderful landscaped front garden, with shrubs, and a rear courtyard garden. Available with no upward chain.

3



1



1







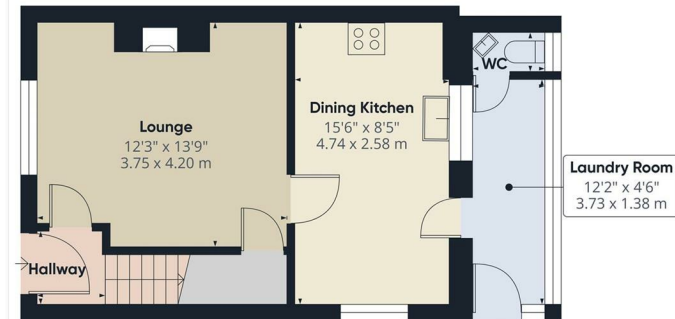








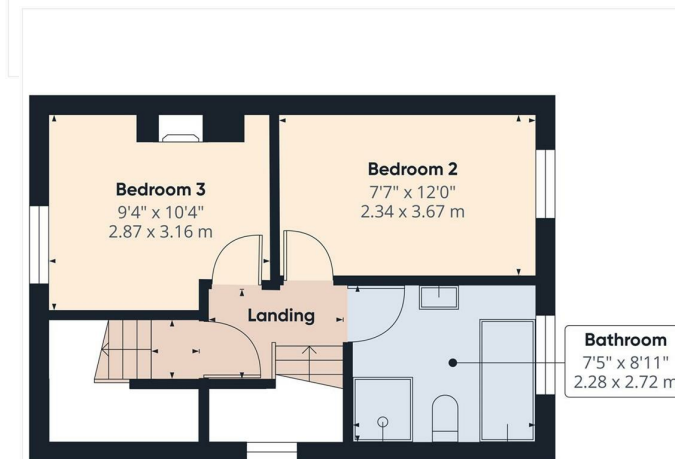




Approximate total area\*  
401 sq'  
37.3 m<sup>2</sup>

(\*) Excluding balconies and terraces

While every attempt has been made to ensure accuracy, all measurements are approximate, not to scale. This floor plan is for illustrative purposes only.



Approximate total area\*  
317 sq'  
29.4 m<sup>2</sup>

(\*) Excluding balconies and terraces

While every attempt has been made to ensure accuracy, all measurements are approximate, not to scale. This floor plan is for illustrative purposes only.

Calculations were based on RICS PAS 55 standard. Please note that calculations were adjusted by a third party and therefore may not comply with RICS PAS 55.

GIFFORD

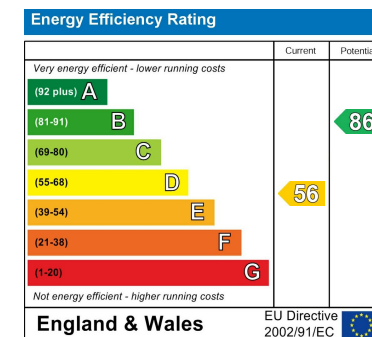
Floor 1

**LOCAL AUTHORITY**  
Wyre Forest District Council

**TENURE**  
Freehold

**COUNCIL TAX BAND**  
B

**VIEWINGS**  
By prior appointment only



Agents Note: Whilst every care has been taken to prepare these particulars, they are for guidance purposes only. All measurements are approximate and are for general guidance purposes only and whilst every care has been taken to ensure their accuracy, they should not be relied upon and potential buyers/tenants are advised to recheck the measurements

**EDEN MIDCALF**  
— SALES & LETTINGS —

5 Load Street  
Bewdley  
DY12 2AF

01299 402392  
wyreforest@edenmidcalf.co.uk  
<https://www.edenmidcalf.co.uk/contact-us/>