

EDEN MIDCALF
— SALES & LETTINGS —

£415,000
Barnfields

Cleobury Mortimer, DY14 8RG

PROPERTY SUMMARY

A modern four bedroom detached family house enjoying a pleasant cul-de-sac setting in historic town of Cleobury Mortimer. Offering a generously proportioned layout with excellent potential for improvement, including two reception rooms, a conservatory extension, a dining kitchen and four bedrooms, master with a dressing room and an en-suite shower room. With off-road parking for four cars, a double garage and an attractively landscaped rear garden. Available with no upward chain.

4



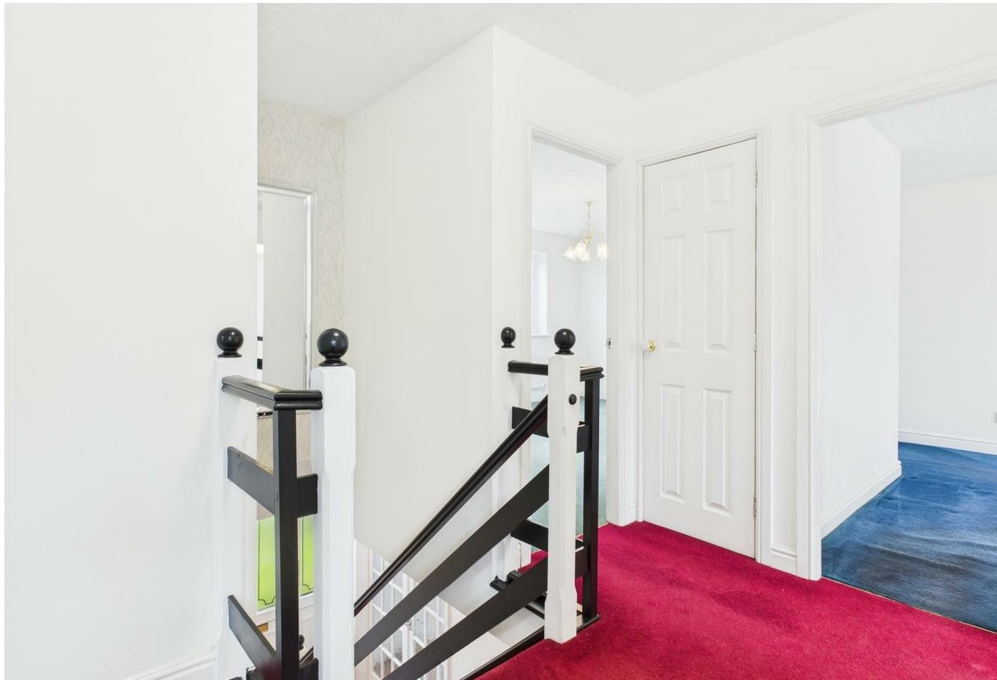
2



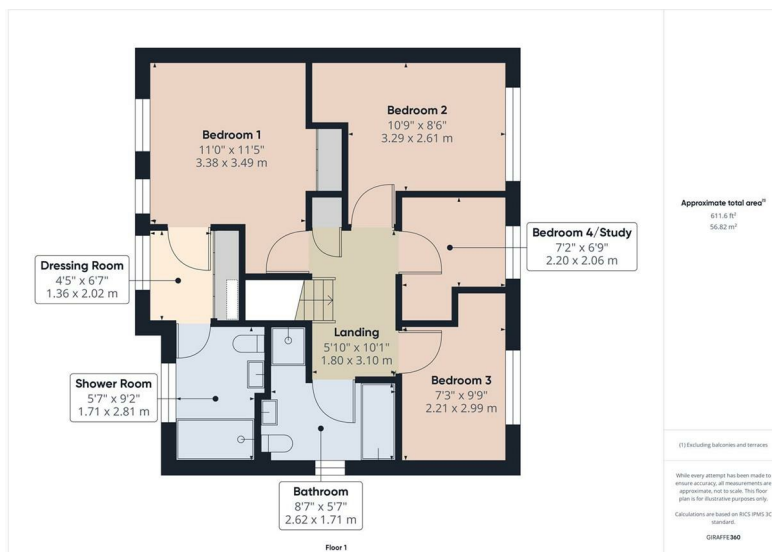
2









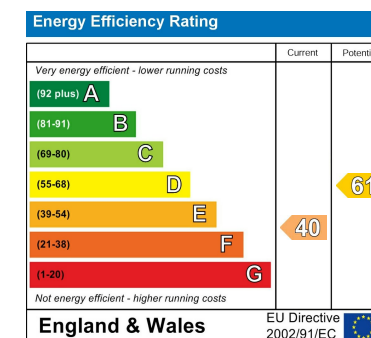


LOCAL AUTHORITY
Shropshire Council

TENURE
Freehold

COUNCIL TAX BAND
E

VIEWINGS
By prior appointment only



Agents Note: Whilst every care has been taken to prepare these particulars, they are for guidance purposes only. All measurements are approximate and are for general guidance purposes only and whilst every care has been taken to ensure their accuracy, they should not be relied upon and potential buyers/tenants are advised to recheck the measurements

EDEN MIDCALF
— SALES & LETTINGS —

5 Load Street
Bewdley
DY12 2AF

01299 402392
wyreforest@edenmidcalf.co.uk
<https://www.edenmidcalf.co.uk/contact-us/>