



CHESTERFIELD GARDENS, LONDON, W1J

£5,500 Per Month

FEATURES

- Two bedroom fifth floor apartment in a prestigious Mayfair block
- Large bright south-facing reception and dining room
- Principal bedroom with en-suite bathroom
- Modern fully fitted kitchen plus family bathroom
- 24-hour porter and lift access
- 0.14 Mile to Hyde Park



Maskells

Two bedroom apartment set on the fifth floor of this portered red brick block in the heart of Mayfair.

The apartment benefits from a large bright south facing reception and dining room, modern fully fitted kitchen, principal bedroom with en-suite bathroom and guest bedroom and family bathroom.

Chesterfield House is a prestigious block set in the heart of Mayfair benefitting from 24 hour uniformed porter, lift and easy access to Hyde Park and Green Park tube station.

Call us on

0207 581 2216

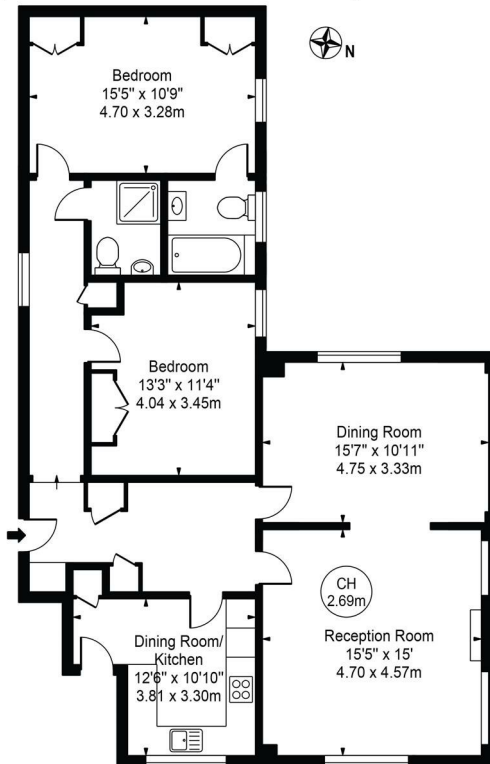
lettings@maskells.com

www.maskells.com

Council Tax Band

H

Chesterfield House
Approx. Gross Internal Area 1161 Sq Ft - 107.86 Sq M



Fifth Floor
For Illustration Purposes Only - Not To Scale

This floor plan should be used as a general outline for guidance only and does not constitute in whole or in part an offer or contract. Any intending purchaser or lessee should satisfy themselves by inspection, searches, enquiries and full survey as to the correctness of each statement. Any areas, measurements or distances quoted are approximate and should not be used to value a property or be the basis of any sale or let.

Floor Plans By Humble Spy Photography

Energy Efficiency Rating		Current	Potential
<i>Very energy efficient - lower running costs</i>			
(92 plus) A			
(81-91) B			
(69-80) C			
(55-68) D		61	
(39-54) E			
(21-38) F			
(1-20) G			
<i>Not energy efficient - higher running costs</i>			
England & Wales		EU Directive 2002/91/EC	

Agents Note: Whilst every care has been taken to prepare these particulars, they are for guidance purposes only. All measurements are approximate and are for general guidance purposes only and whilst every care has been taken to ensure their accuracy, they should not be relied upon and potential buyers are advised to recheck the measurements.

Maskells