



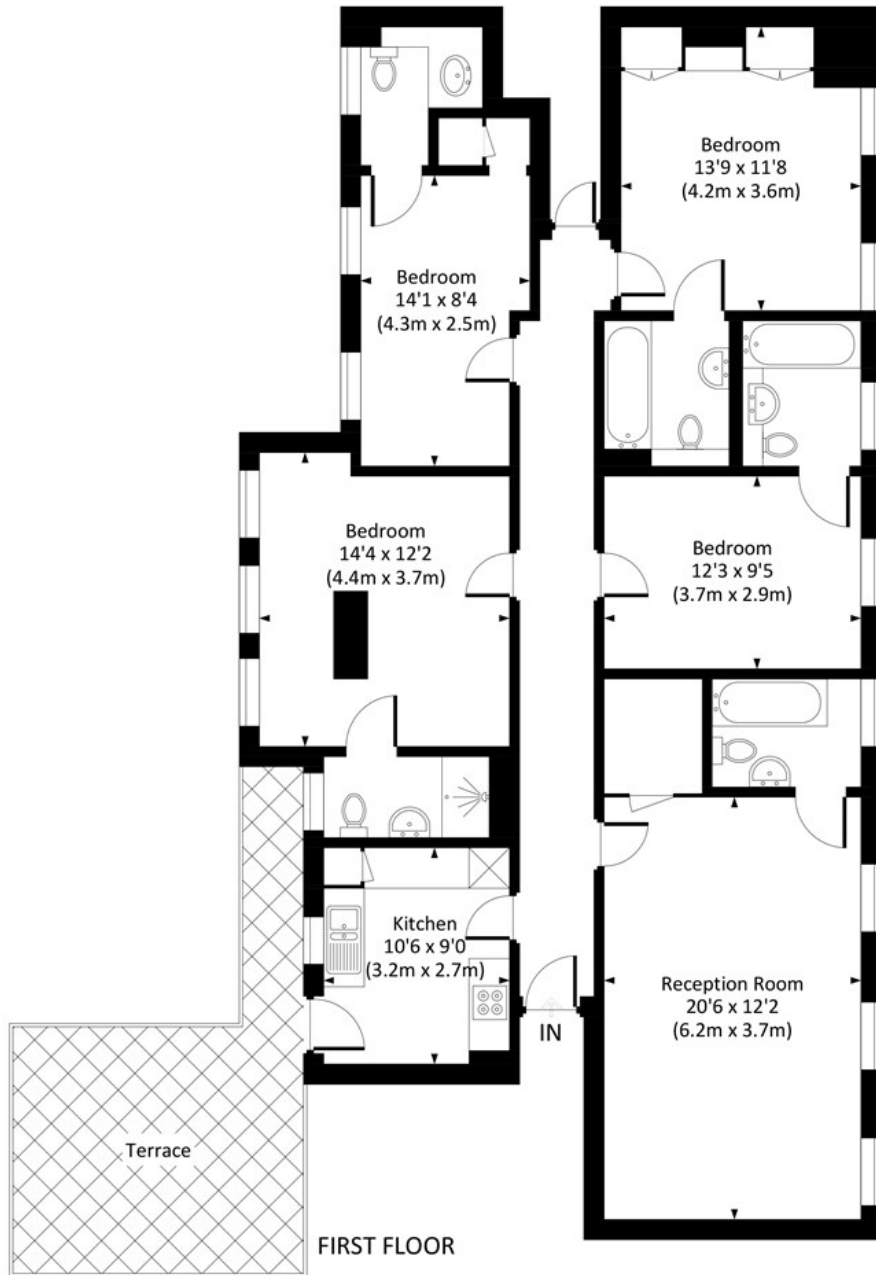
# KENDRICK MEWS, SOUTH KENSINGTON, SW7



**M**askells

# KENDRICK MEWS, SW7

Approx. gross internal area  
1348 Sq Ft. / 125.2 Sq M.



Large, bright and superbly located 2 bedroom flat with 3 reception rooms which could double as additional study/workspace, and with the added benefit of heating and hot water included in the rent. A first floor lateral apartment of over 1,380 Square feet (125 Sq m) with 2 double bedrooms, 4 bathrooms, large principle reception room, 2 further living rooms, separate kitchen and small private terrace.

## FEATURES

- Large (125 Sq m / 1,348 Sq ft) 2 bedroom first floor flat
- Exceptional location on a quiet street adjacent to South Kensington underground station
- 3 reception rooms and 4 bathrooms
- Rental includes heating and hot water
- Large principle reception room with wood flooring
- Separate full fitted kitchen
- Private roof terrace
- Close to shopping and transport amenities
- 0.6 miles from Hyde Park

## TERMS

**Price** £750 Per Week (£3,250 PCM)  
**Furnishings** Furnished  
**EPC** C

**Maskells**

**0207 581 2216**

**lettings@maskells.com**

**www.maskells.com**



All measurements have been made in accordance with RICS code of Measuring Practice which are approximate only and only for illustrative purposes. For the avoidance of doubt, Dowling Jones Design shall not be liable for any reliance on these measurements. © 2022 www.dowlingjones.com 020 7610 9933

Agents Note: Whilst every care has been taken to prepare these particulars, they are for guidance purposes only. All measurements are approximate and are for general guidance purposes only and whilst every care has been taken to ensure their accuracy, they should not be relied upon and potential buyers are advised to recheck the measurements.