



PRINCE OF WALES DRIVE, BATTERSEA SW11

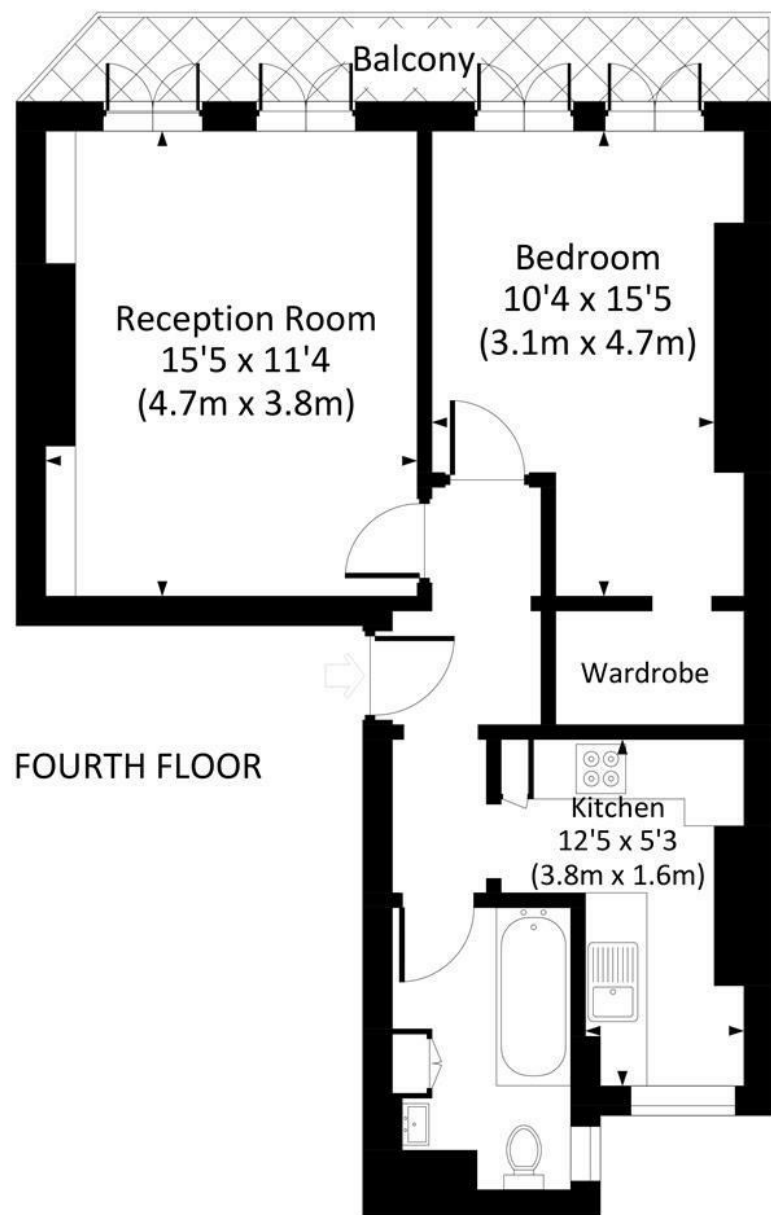
- Elegant and well proportioned 1 bedroom apartment
- Situated within a prime mansion block
- Beautiful views overlooking Battersea Park
- Wonderful terrace accessed from both the reception and bedroom
- 3rd floor apartment flooded with natural light
- Approx 0.6 miles to Battersea Park train station
- Approx 0.8 miles to Battersea Power Station underground




Maskells

CYRIL MANSIONS, PRINCE OF WALES DRIVE, SW11

Approx. gross internal area
563 Sq Ft. / 52.3 Sq M.



 All measurements have been made in accordance with RICS code of Measuring Practice which are approximate only and only for illustrative purposes. For the avoidance of doubt, Dowling Jones Design shall not be liable for any reliance on these measurements. © 2022 www.dowlingjones.com 020 7610 9933

TERMS

Price £540 Per Week (£2,340 PCM)
Furnishings Furnished
EPC D

An elegant and well proportioned 1 bedroom apartment, situated on the third floor of this popular mansion building, well located to access the transport links of both Battersea Park mainline station and Battersea Power Station underground. The flat directly overlooks Battersea Park itself, with fabulous views from both principal rooms, and benefits from a private terrace accessed through the reception room and bedroom, as well as high ceilings and wood flooring. EPC D.

The accommodation comprises; entrance hall, reception/dining room, bedroom with separate dressing room, fully fitted kitchen and bathroom with shower over bath.

Agents Note: Whilst every care has been taken to prepare these particulars, they are for guidance purposes only. All measurements are approximate and are for general guidance purposes only and whilst every care has been taken to ensure their accuracy, they should not be relied upon and potential buyers are advised to recheck the measurements.

Maskells

lettings@maskells.com
www.maskells.com