



COURTFIELD GARDENS, SOUTH KENSINGTON SW5

£920 Per Week (£3,986.66 PCM)

FEATURES

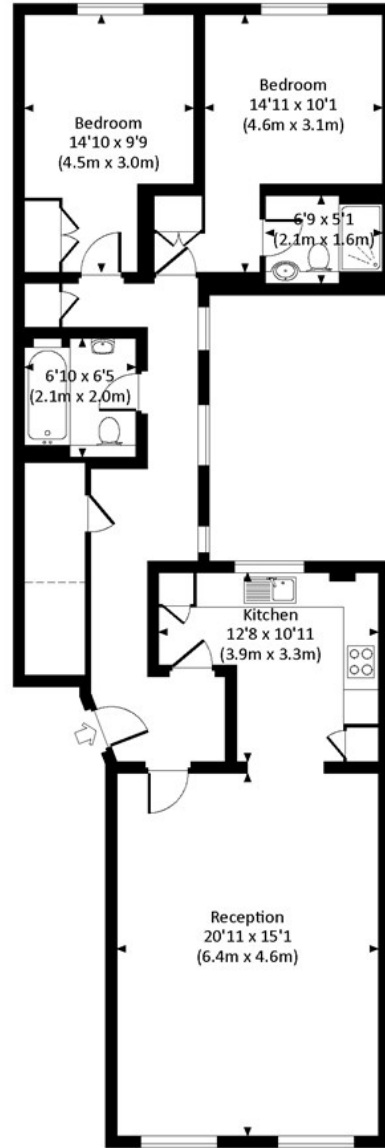
- 2 Bedroom 2 bathroom flat of over 1,000 Sq ft (95 Sq m)
- Recently refurbished throughout including stylish kitchen and bathrooms
- Hardwood flooring throughout
- Huge reception room with high ceilings
- Access to beautiful communal gardens
- Close proximity to Gloucester Road and High Street Kensington



Maskells

COURTFIELD GARDENS, SW5

Approx. gross internal area
1013 Sq Ft. / 94.1 Sq M.



GROUND FLOOR



All measurements have been made in accordance with RICS Code of Measuring Practice which are approximate only and only for illustrative purposes. For the avoidance of doubt, Dowling Jones Design shall not be liable for any reliance on these measurements. © 2019 www.dowlingjones.com 020 7610 9933

Energy Efficiency Rating		Current	Potential
Very energy efficient - lower running costs			
(92 plus) A			
(81-91) B			
(69-80) C			
(55-68) D		69	79
(39-54) E			
(21-38) F			
(1-20) G			
Not energy efficient - higher running costs			
England & Wales		EU Directive 2002/91/EC	

Call us on

0207 581 2216

lettings@maskells.com

www.maskells.com

Council Tax Band: G

Recently refurbished throughout and presented in excellent condition, this smart and contemporary two bedroom two bathroom ground floor apartment comes with access to beautiful communal gardens and, with over 1,000 Sq Ft (95 Sq m) of internal accommodation, is extremely spacious, light and bright.

The property benefits from wood flooring throughout, high ceilings, a separate washing machine and dryer, large storage cupboard and is situated within a well maintained stucco-fronted building.

The flat is conveniently situated a short walk to Gloucester Road, Earls Court and High Street Kensington. Energy Rating C.

Courtfield Gardens is 0.3 miles to Gloucester Road underground station (District, Circle and Piccadilly lines) and 0.8 miles to High Street Kensington underground station (District and Circle lines).

All potential tenants should be advised that administration fees may be applicable when renting a property. Please contact us for more details of these charges.

Agents Note: Whilst every care has been taken to prepare these particulars, they are for guidance purposes only. All measurements are approximate and are for general guidance purposes only and whilst every care has been taken to ensure their accuracy, they should not be relied upon and potential buyers are advised to recheck the measurements.

