



WALTON STREET, CHELSEA SW3

£595 Per Week (£2,579 PCM)

FEATURES

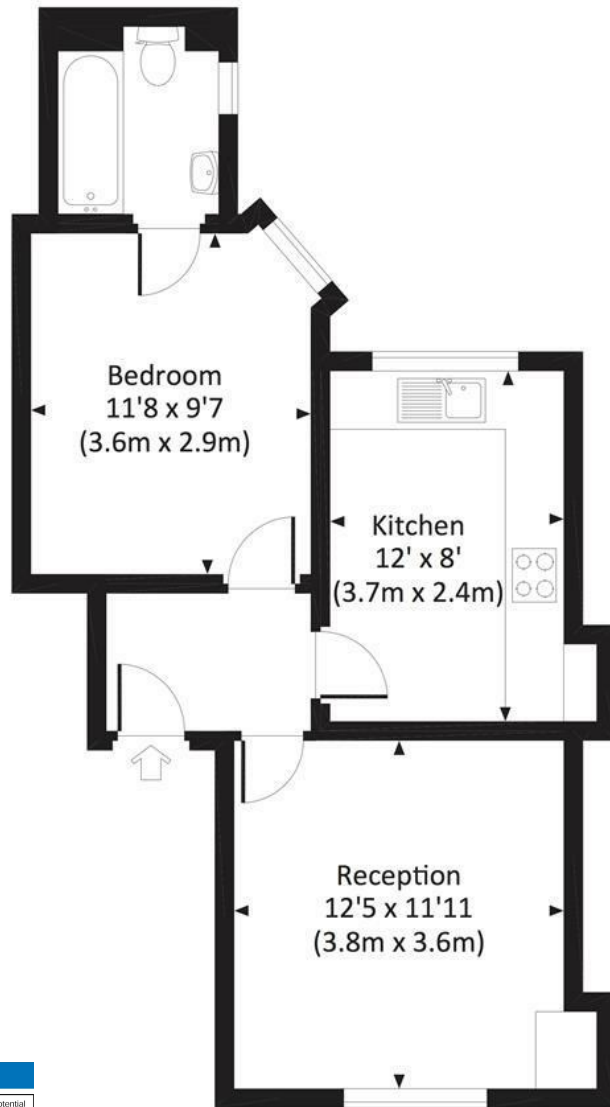
- Immaculate and contemporary one bedroom apartment
- Sunny outlook with lovely views overlooking Knightsbridge
- Excellent condition throughout
- Secure portered development
- Prime Chelsea/Knightsbridge Location
- 0.4 miles to South Kensington tube
- 0.6 miles to Sloane Square
- 0.7 miles to Hyde Park



Maskells

THE MARLBOROUGH, SW3

Approx. gross internal area
438 Sq Ft. / 40.7 Sq M.



FOURTH FLOOR

Energy Efficiency Rating	
Current	Potential
Very energy efficient - lower running costs	
(92 plus) A	
(81-91) B	
(69-80) C	
(55-68) D	61
(39-54) E	67
(21-38) F	
(1-20) G	
Not energy efficient - higher running costs	
England & Wales	
EU Directive 2002/91/EC	



All measurements have been made in accordance with RICS Code of Measuring Practice which are approximate only and only for illustrative purposes. For the avoidance of doubt, Dowling Jones Design shall not be liable for any reliance on these measurements. © 2017 www.dowlingjones.com 020 7610 9933

Call us on

0207 581 2216

Lettings@maskells.com
www.maskells.com

Council Tax Band: F
EPC: D

A smart and contemporary one bedroom top floor apartment, presented in excellent condition throughout with an eat-in kitchen, modern bathroom and large reception with built-in workspace. Situated within a secure portered development, a short walk from South Kensington tube and Sloane Square. EPC D.

Walton Street is moments away from South Kensington (District, Circle and Piccadilly lines) and Knightsbridge (Piccadilly Line) underground stations, and is a short walk from the amenities that can be found in Knightsbridge and on the Kings Road.

All potential tenants should be advised that administration fees may be applicable when renting a property. Please contact us for more details of these charges.

Agents Note: Whilst every care has been taken to prepare these particulars, they are for guidance purposes only. All measurements are approximate and are for general guidance purposes only and whilst every care has been taken to ensure their accuracy, they should not be relied upon and potential buyers are advised to recheck the measurements.

Maskells