



ECCLESTON SQUARE, LONDON SW1V

£575 Per Week (£2,491.66 PCM)

FEATURES

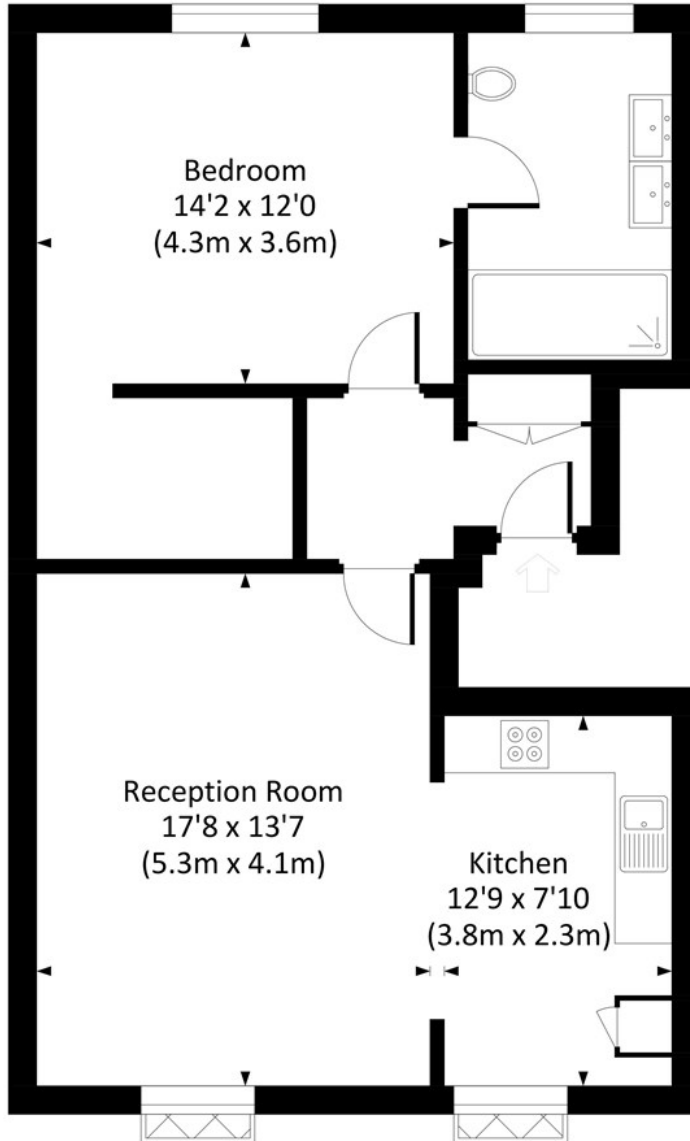
- Exceptionally large and bright 1 bedroom apartment
- Over 700 Sq ft (68 Sq m) of internal accommodation
- Wood flooring in the reception areas
- Top floor flat with amazing views
- Only 0.3 miles to Victoria train and underground station
- Situated on prime garden square with communal gardens access
- Open plan kitchen, dining and reception space
- Large bathroom with double sink and walk-in shower
- Large dressing room
- 0.7 miles to Sloane Square and 0.8 miles to Buckingham Palace



Maskells

ECCLESTON SQUARE, SW1V

Approx. gross internal area
731 Sq Ft. / 67.9 Sq M.



FOURTH FLOOR

Call us on

0207 581 2216

lettings@maskells.com

www.maskells.com

Council Tax Band H

F

A stylish and extremely spacious top floor (4th floor) 1 bedroom apartment, presented in excellent decorative order. The flat measure over 700 Sq ft internally, includes an integral dressing room for those with large wardrobes and has wonderful views over London. Situated on one of London's finest garden squares with access to the gardens, and only 0.3 miles from Victoria station and 0.7 miles from Sloane Square. Energy rating C.

The flat has been recently renovated and benefits from wood floors in the reception spaces, a fully fitted kitchen with dishwasher and washer dryer, large bedroom with separate dressing room and a shower room with walk-in rain shower and double sink. The accommodation comprises; entrance hall, open plan kitchen/dining and reception area, bedroom, separate dressing room and large bathroom with a double sink.

Eccleston Square is 0.3 miles to Victoria underground station (District, Circle and Victoria lines) and 0.7 miles to Sloane Square underground station (District and Circle lines).

All potential tenants should be advised that administration fees may be applicable when renting a property. Please contact us for more details of these charges.

Agents Note: Whilst every care has been taken to prepare these particulars, they are for guidance purposes only. All measurements are approximate and are for general guidance purposes only and whilst every care has been taken to ensure their accuracy, they should not be relied upon and potential buyers are advised to recheck the measurements.

| Energy Efficiency Rating | | Current | Potential |
|---|--|-------------------------|-----------|
| Very energy efficient - lower running costs | | | |
| (92 plus) A | | | |
| (81-91) B | | | |
| (69-80) C | | | |
| (55-68) D | | | |
| (39-54) E | | | |
| (21-38) F | | | |
| (1-20) G | | | |
| Not energy efficient - higher running costs | | | |
| | | 71 | 80 |
| England & Wales | | EU Directive 2002/91/EC | |



All measurements have been made in accordance with RICS code of Measuring Practice which are approximate only and only for illustrative purposes. For the avoidance of doubt, Dowling Jones Design shall not be liable for any reliance on these measurements. © 2022 www.dowlingjones.com 020 7610 9933