



EGERTON CRESCENT, LONDON, GREATER LONDON, SW3

£825 Per Week

FEATURES

- Close proximity to Harrods and South Kensington underground station
- Well presented
- 2 Bedrooms



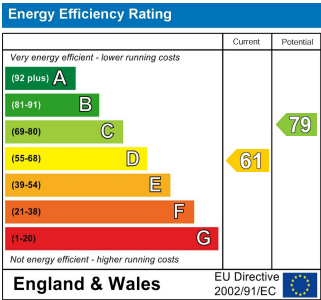
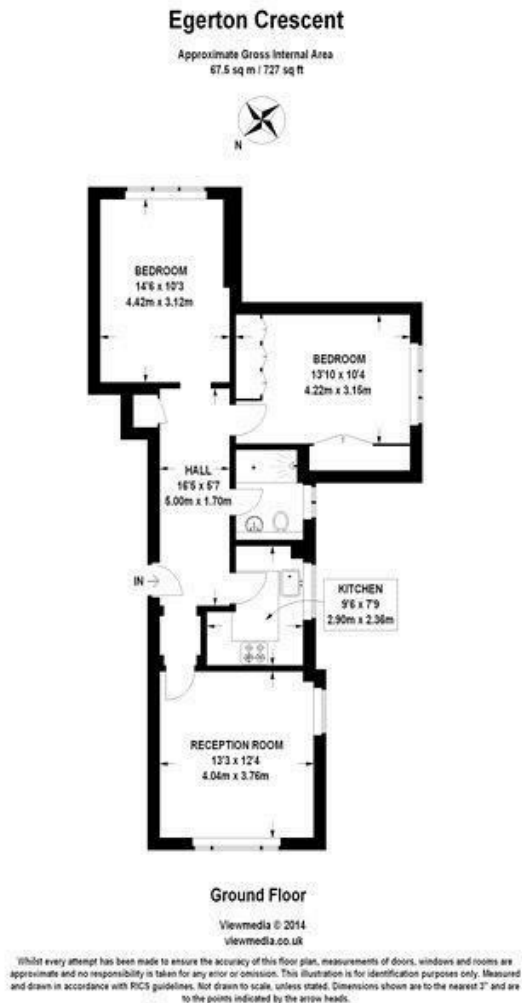
Maskells

A well presented two bedroom apartment situated in a beautiful stucco fronted Victorian house in this prime Knightsbridge location a short walk from Harrods and either South Kensington or Knightsbridge underground stations. Energy Rating D.

Call us on
0207 581 2216

lettings@maskells.com
www.maskells.com

Council Tax Band
G



Agents Note: Whilst every care has been taken to prepare these particulars, they are for guidance purposes only. All measurements are approximate and are for general guidance purposes only and whilst every care has been taken to ensure their accuracy, they should not be relied upon and potential buyers are advised to recheck the measurements.

