



# WALTON STREET, CHELSEA, SW3

£575 Per Week (£2,492 PCM)

## FEATURES

- 1 bedroom apartment
- Secure portered development
- 0.4 miles to South Kensington tube
- Private patio garden
- Close proximity to South Kensington and Sloane Square
- 0.5 miles to Sloane Square

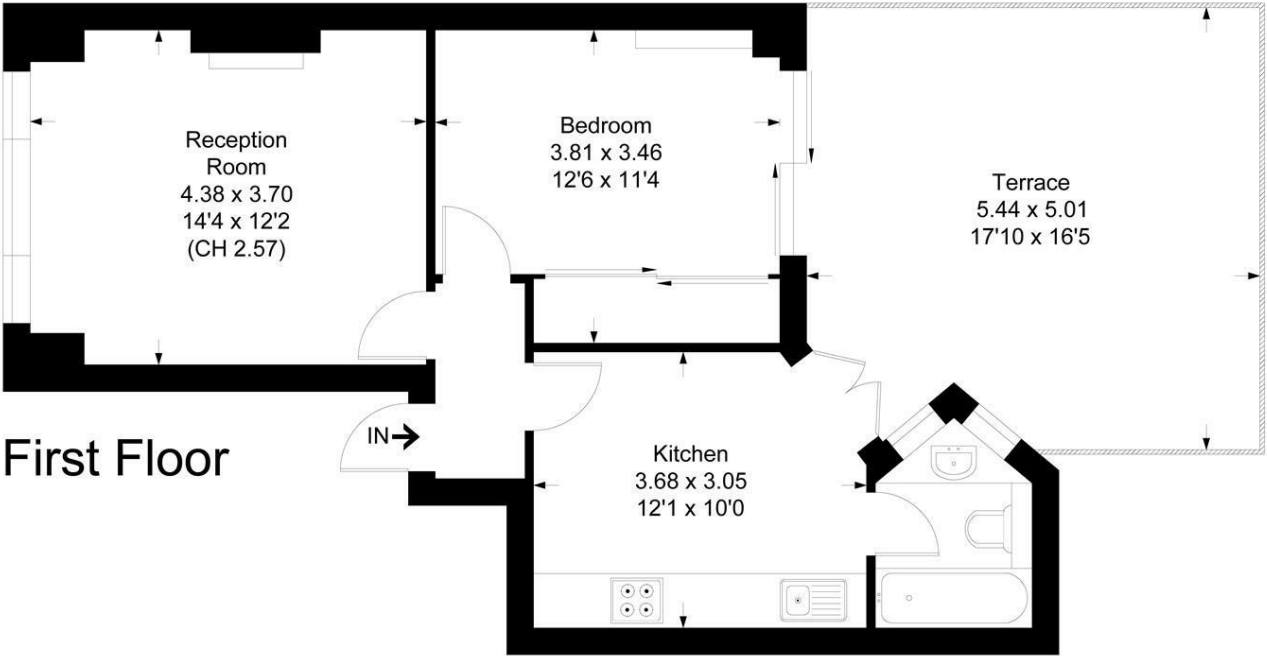


**Maskells**

Call us on  
**0207 581 2216**  
[Lettings@maskells.com](mailto:Lettings@maskells.com)  
[www.maskells.com](http://www.maskells.com)  
Council Tax Band: F

# Marlborough, SW3

Approximate Floor Area = 45.85sq m / 494 sq ft



Not to scale, for guidance only and must not be relied upon as a statement of fact.  
All measurements and areas are approximate only

A well proportioned one bedroom garden flat situated in this highly sought after secure portered development in the heart of Chelsea, close to the amenities and transport links of South Kensington. The property is offered on a furnished basis and boasts a private patio garden to the rear. EPC D.

The property is presented in good condition, and comprises entrance hall, reception room, separate eat-in-kitchen, bedroom, bathroom and a patio garden.

Walton Street is 0.3 miles to South Kensington underground station (District, Circle and Piccadilly lines) and a short walk from Harrods and the shops on Brompton Road.

All potential tenants should be advised that administration fees may be applicable when renting a property. Please contact us for more details of these charges. Maskells are members of Propertymark the leading membership body for property agents. We are part of the Propertymark Client Money Protection scheme and a member of The Property Ombudsman Scheme (approved by the Office of Fair Trading) and subscribe to its Codes of Practice for Letting Agents.

Agents Note: Whilst every care has been taken to prepare these particulars, they are for guidance purposes only. All measurements are approximate and are for general guidance purposes only and whilst every care has been taken to ensure their accuracy, they should not be relied upon and potential buyers are advised to recheck the measurements

