

# CHESTERFIELD HOUSE

MAYFAIR, W1J





A well-presented two bedroom apartment set on the fifth floor of Chesterfield House, a prestigious portered red brick block in the heart of Mayfair.

The apartment offers generous and bright accommodation throughout, including a spacious south-facing reception room with dining area, elegant period detailing and large windows providing excellent natural light and attractive rooftop views. The property further comprises a modern fully fitted kitchen, principal bedroom with en-suite bathroom, a second double bedroom and a separate family bathroom.



Chesterfield House is a highly regarded residential building benefitting from a 24-hour uniformed porter, lift access and an enviable Mayfair location, moments from the boutiques, restaurants and green spaces of the West End.

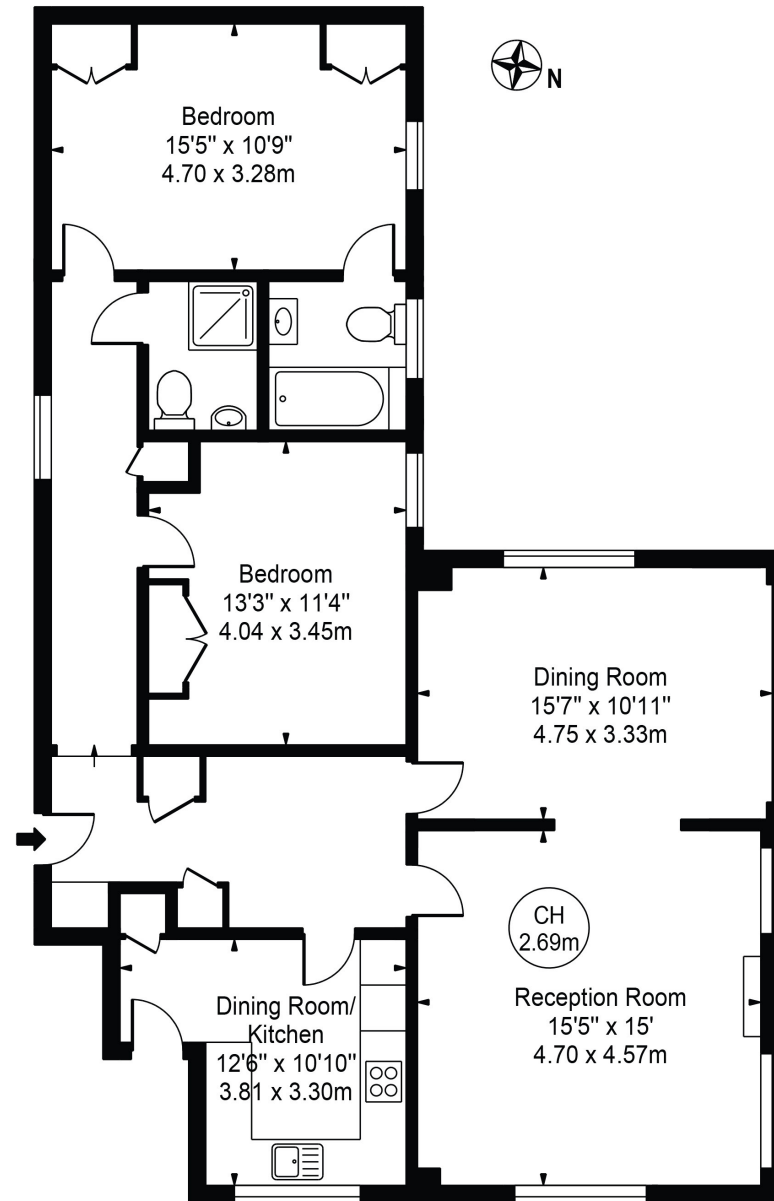


- Two bedroom fifth floor apartment in a prestigious Mayfair block
- Large bright south-facing reception and dining room
- Principal bedroom with en-suite bathroom
- Modern fully fitted kitchen plus family bathroom
- 24-hour porter and lift access





APPROXIMATE GROSS INTERNAL AREA  
1,161 Sq Ft / 107.89 Sq M



Fifth Floor

We wish to advise prospective purchasers that we have prepared these sales particulars as a rough guide. We have not carried out a detailed survey or tested the services, appliances or specific fittings. Measurements are approximate.

ASKING PRICE

£1,303 Per Week (£5,646 PCM)

FURNISHED

EPC  
D

COUNCIL TAX BAND  
H

LOCAL AUTHORITY  
Westminster

Maskells

71 Walton Street, Chelsea, SW3 2HT

Tel: 0207 581 2216  
sales@maskells.com  
lettings@maskells.com  
[maskells.com](http://maskells.com)