



Westminster Gardens
Marsham Street, SW1

Maskells

This is a superb 3 bedroom lateral unfurnished apartment on the 2nd floor (with lift) of a highly regarded building with 24 hour porters and free residents car parking.



Accommodation and Amenities

- Large lateral 3 bedroom apartment
- 24 Hour Porters
- Free Surface, Car Parking For Residents
- Extends to 1,754 Sq ft (163 Sq m)
- Excellent Location
- Unfurnished
- 0.4 miles to Pimlico station
- 0.6 miles to St James's Park

The flat is entered into a generous hallway where to the left is a fully fitted kitchen with a large window, bringing in plenty of natural light. Across the hall is an excellent double drawing room with large windows and a fireplace forming the focal point to the room. Adjacent is a large dining room which easily accommodates a table fitting 8-10 seats. The principal bedroom has an en-suite bathroom and benefits from built-in storage. There are two further bedrooms and another shower room. The small third bedroom is currently used as a study. There is also a storage room and a guest cloakroom.

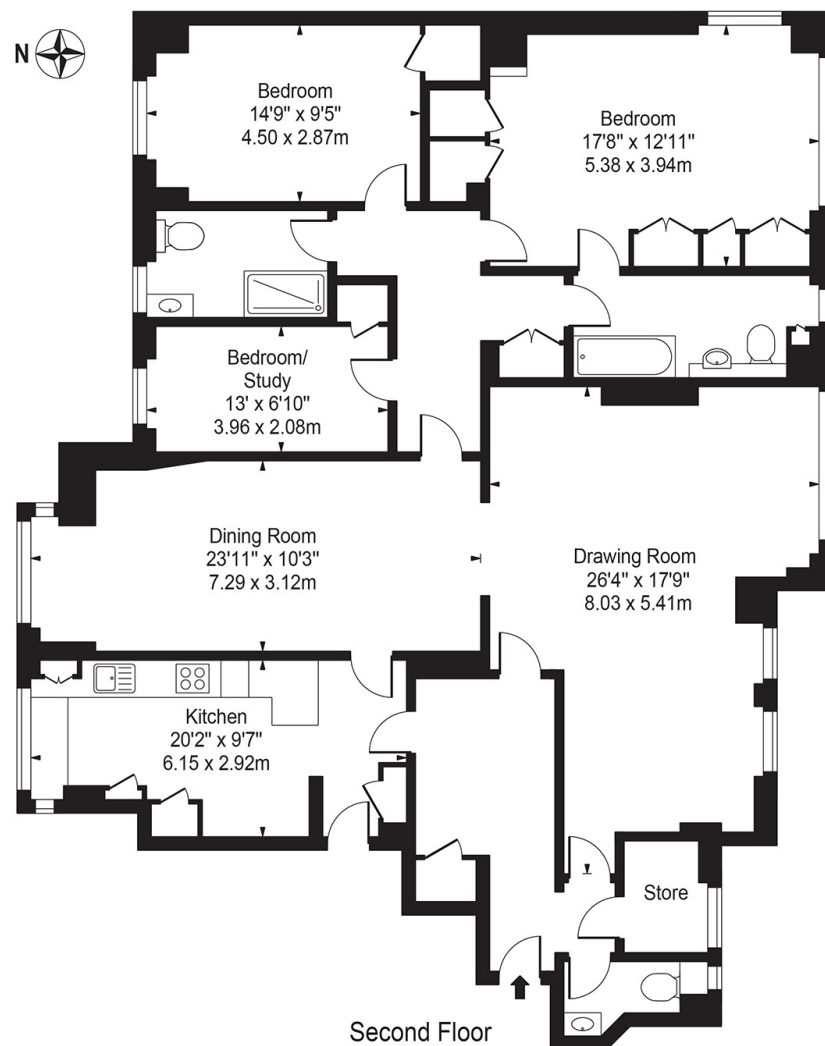
Westminster Gardens, on Marsham Street, was built in the 1930's and provides residents with free, surface, car parking. The flat is very well located, close to the Houses of Parliament, River Thames and many amenities on offer close by. Pimlico underground station is 0.4 miles away, Victoria Station is 0.9 miles away and St James's Park underground station is 0.6 miles away.





APPROXIMATE FLOOR AREA

162.95 sq m / 1,754 sq ft



TERMS

Asking Price: £923 Per Week (£4,000 PCM)

Local Authority: Westminster

Council Tax Band: G

Unfurnished

EPC: C

Fees may be applicable to potential tenants, please ask us for more details.



@maskellsea

Maskells

71 Walton Street, London SW3 2HT

Tel: 0207 581 2216

sales@maskells.com

lettings@maskells.com

[maskells.com](https://www.maskells.com)

