



KINGS COURT NORTH, CHELSEA SW3

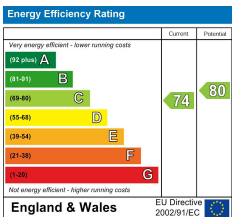
£460 Per Week (£1,993.33 PCM)

FEATURES

- Charming 1 bedroom flat in excellent condition
- Porter
- Access to communal gardens
- 0.5 miles from South Kensington Station and 0.7 miles from Sloane Square
- Second floor with lift
- Communal heating and hot water
- Views over Dovehouse Green



Maskells



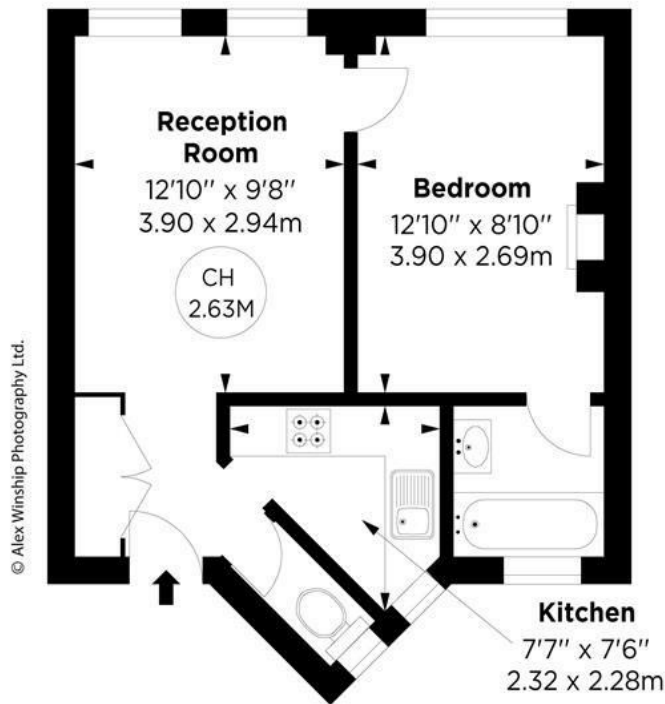
Kings Court North, SW3

APPROX. GROSS INTERNAL AREA *
371 Sq Ft - 34.47 Sq M



This floorplan is for GUIDANCE ONLY and NOT FOR VALUATION purposes.

Key :
CH - Ceiling Height



SECOND FLOOR

ALEX
WINSHIP
Photography

* Floorplan for guidance only, not to scale or valuation purposes. It must not be relied upon as a statement of fact. All measurements and areas are approximate and have been prepared in accordance with the current edition of the RICS Code of Measuring Practice.



Call us on

0207 581 2216

lettings@maskells.com

www.maskells.com

Council Tax Band: D

A charming and well presented one bedroom flat with access to communal gardens, situated on the 2nd floor (with lift) of a highly regarded building with portage. Located only 0.5 miles from South Kensington station and 0.7 miles from Sloane Square. Energy Rating C.

Upon entering, there is a coat cupboard to the left and well appointed kitchen to the right, with a guest cloakroom positioned adjacent. Towards the front is the reception room with two windows looking over Dovehouse Green. The flat is completed by a double bedroom with en-suite bathroom. There is also a pretty communal garden to the rear, to which the flat has access. Communal hot water and heating.

Kings Court North is well positioned on the Kings Road for the vast array of amenities to be found in the immediate area. Sloane Square underground station (District and Circle Lines) is 0.7 miles away and South Kensington underground station (District, Circle and Piccadilly Lines) is 0.6 miles away.

All potential tenants should be advised that administration fees may be applicable when renting a property. Please contact us for more details of these charges.

Maskells

Agents Note: Whilst every care has been taken to prepare these particulars, they are for guidance purposes only. All measurements are approximate and are for general guidance purposes only and whilst every care has been taken to ensure their accuracy, they should not be relied upon and potential buyers are advised to recheck the measurements.