



ST JOHN'S HILL, LONDON SW11

£460 Per Week (£1,993.33 PCM)

FEATURES

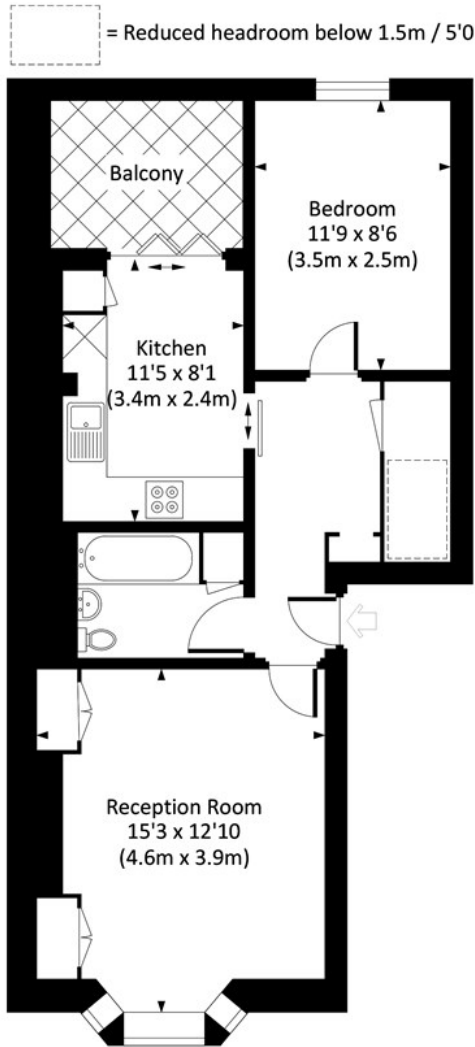
- Large raised ground floor 1 bedroom flat
- Private terrace
- Eat in kitchen and separate large reception room
- High ceilings and period features
- Superb location a 7 min walk to Clapham Junction station
- 0.4 miles Northcote Road
- 0.3 miles to Wandsworth Common
- 0.7 miles to Clapham Common



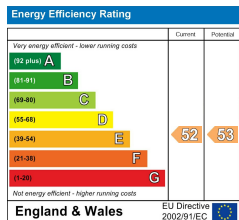
Maskells

ST JOHN'S HILL, SW11

Approx. gross internal area
 519 Sq Ft. / 48.2 Sq M.
 13 Sq Ft. / 1.2 Sq M. Reduced Headroom
 532 Sq Ft. / 49.4 Sq M. Including Reduced Headroom



GROUND FLOOR



All measurements have been made in accordance with RICS code of Measuring Practice which are approximate only and only for illustrative purposes. For the avoidance of doubt, Dowling Jones Design shall not be liable for any reliance on these measurements. © 2020 www.dowlingjones.com 020 7610 9933

Call us on

0207 581 2216

lettings@maskells.com

www.maskells.com

Council Tax Band: C

A charming and beautifully presented, larger than average 1 bedroom raised ground floor apartment with private terrace and eat in kitchen. Situated on St John's Hill, a very short walk from Clapham Junction station, Wandsworth Common and Northcote Road. EPC E.

The flat has been recently redecorated and is presented in immaculate condition. The apartment measures 532 Sq ft (50 Sq m) internally, and benefits from a large reception room with period features and plenty of storage.

All potential tenants should be advised that administration fees may be applicable when renting a property. Please contact us for more details of these charges.

Agents Note: Whilst every care has been taken to prepare these particulars, they are for guidance purposes only. All measurements are approximate and are for general guidance purposes only and whilst every care has been taken to ensure their accuracy, they should not be relied upon and potential buyers are advised to recheck the measurements.

