



POINT WEST, SOUTH KENSINGTON SW7

£850 Per Week (£3,683.33 PCM)

FEATURES

- Large beautifully presented 2 bedroom apartment
- 24 hour concierge
- 5th floor with lift
- Close proximity to Gloucester Road underground station
- Terrace with great views
- Over 1,000 Square feet of accommodation
- Gym facilities available separately

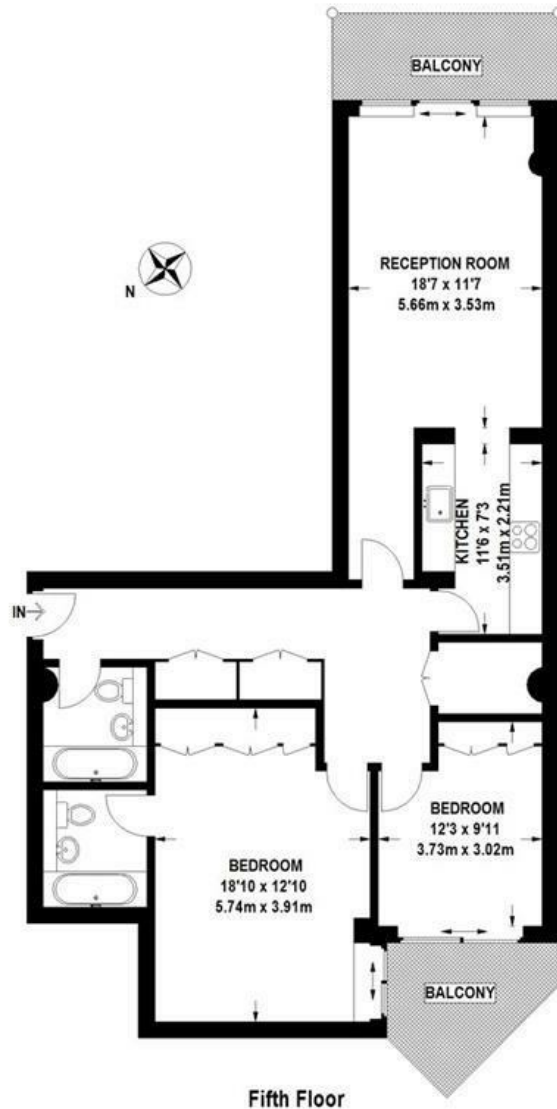


Maskells

Energy Efficiency Rating		Current	Potential
Very energy efficient - lower running costs			
(92 plus) A			
(81-91) B			
(69-80) C		77	81
(55-68) D			
(39-54) E			
(21-38) F			
(1-20) G			
Not energy efficient - higher running costs			
England & Wales	EU Directive 2002/91/EC		

Cromwell Road

Approximate Gross Internal Area
94.8 sq m / 1020 sq ft



Fifth Floor

Viewmedia © 2015
viewmedia.co.uk

Whilst every attempt has been made to ensure the accuracy of this floor plan, measurements of doors, windows and rooms are approximate and no responsibility is taken for any error or omission. This illustration is for identification purposes only. Measured and drawn in accordance with RICS guidelines. Not drawn to scale, unless stated. Dimensions shown are to the nearest 3" and are to the points indicated by the arrow heads.

Call us on
0207 581 2216

lettings@maskells.com
www.maskells.com

Council Tax Band **C**

A beautifully presented 2 bedroom 2 bathroom apartment of over 1,000 Sq ft, on the 5th floor with private balcony, in this very popular and convenient portered building. The apartment is close to the shopping and transport amenities of both South Kensington and Gloucester Road. Energy Rating C.

The apartment is close to the shopping and transport amenities of both South Kensington and Gloucester Road. The development benefits from secure 24-hour portage, underground parking and there is a large gym within the complex (membership and parking fees apply separately).

The property itself is presented in excellent condition having just been redecorated throughout recently and includes wood floors and stylish kitchen and a large balcony. The accommodation comprises of: an entrance hall with coat storage cupboard, reception room, kitchen, master bedroom with built-in wardrobes and en-suite bathroom, second double bedroom and second bathroom.

The property is 0.2 miles from Gloucester Road underground station (District, Circle and Piccadilly lines) and 0.5 miles from Earl's Court underground station (District and Piccadilly lines).

Agents Note: Whilst every care has been taken to prepare these particulars, they are for guidance purposes only. All measurements are approximate and are for general guidance purposes only and whilst every care has been taken to ensure their accuracy, they should not be relied upon and potential buyers are advised to recheck the measurements.

Maskells