



QUEEN'S GATE PLACE, LONDON, SW7

£1,000 Per Week

FEATURES

- Striking 2 bedroom apartment with classical design and proportions
- Access to Queen's Gate Gardens (subject to membership fee)
- Exceptional address and Grand building, built for the Great Exhibition of 1855
- High ceilings and lots of natural light
- Double formal reception room
- Ample storage throughout



Maskells

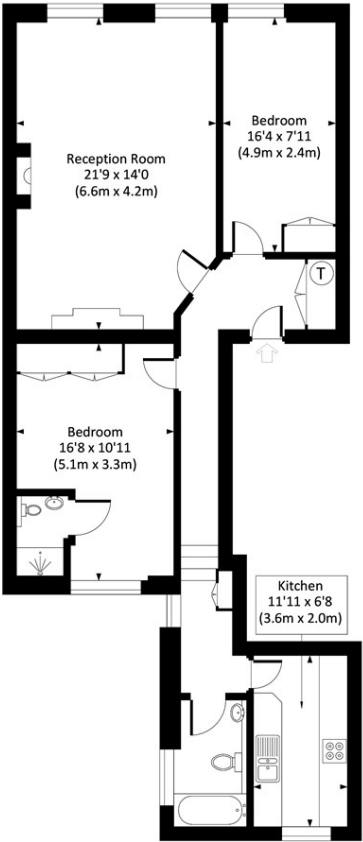
Exceptionally bright and impressive 2 bedroom 2 bathroom apartment offering 900 Sq ft of internal accommodation, situated over the entire second floor of a grand period building superbly located close to Hyde Park and South Kensington tube, and with the added benefit of access to Queens Gate Gardens subject to application. Energy Rating C.

This beautiful lateral apartment has been recently redecorated with new carpets, and is presented in immaculate condition ready for an incoming tenant. Situated on the second floor the flat benefits from a double reception room, high ceilings, large windows, grand proportions and ample storage throughout.

The accommodation comprises; entrance hall, double reception room, separate kitchen, master bedroom with en-suite shower room and built in wardrobes, second double bedroom and family bathroom.

QUEEN'S GATE PLACE, SW7

Approx. gross internal area
899 Sq Ft. / 83.5 Sq M.



SECOND FLOOR

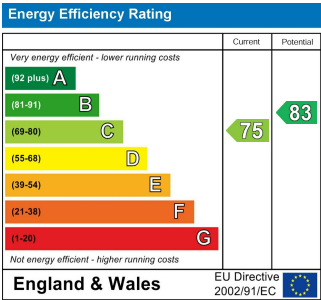


All measurements have been made in accordance with RICS code of Measuring Practice which are approximate only and only for illustrative purposes. For the avoidance of doubt, Dowling Jones Design shall not be liable for any reliance on these measurements. © 2020 www.dowlingjones.com 020 7610 9933

Call us on
0207 581 2216

lettings@maskells.com
www.maskells.com

Council Tax Band
G



Agents Note: Whilst every care has been taken to prepare these particulars, they are for guidance purposes only. All measurements are approximate and are for general guidance purposes only and whilst every care has been taken to ensure their accuracy, they should not be relied upon and potential buyers are advised to recheck the measurements.

