

PONT STREET MEWS

CHELSEA SW1X





A NEWLY REFURBISHED AND IMMACULATLY PRESENTED 3 BEDROOM MEWS HOUSE, EXTENDING TO CIRCA 1,700 SQFT(157SQM),DISCREETLY SITUATED DOWN THIS CHARMING COBBLED MEWS ADDRESS, ITSELF IN A QUIET BUT HIGHLY CONVENIENT CORNER OF THE CHELSEA / KNIGHTSBRIDGE BORDERS, ONLY A MINUTES WALK FROM HARRODS, 6 MINUTES FROM KNIGHTSBRIDGE UNDERGROUND STATION AND 0.4 MILES FROM HYDE PARK.

The house has just been the subject of extensive improvements and refinement, presenting the incoming tenant with the opportunity to rent a home presented in "as new" condition, filled with period charm and character as well as offering well laid out accommodation for this larger than average house.

Of particular note is the capacious drawing room with wood flooring, encompassing virtually the entire first floor of the building with beautiful views over the residential gardens behind and a double aspect, filling the room with natural light. Further benefits include new carpeting throughout, good sized double bedrooms, excellent storage and a modern fully fitted kitchen.



The accommodation comprises; entrance hall, eat-in kitchen, guest WC, large reception room, three double bedrooms and two bathrooms. EPC D

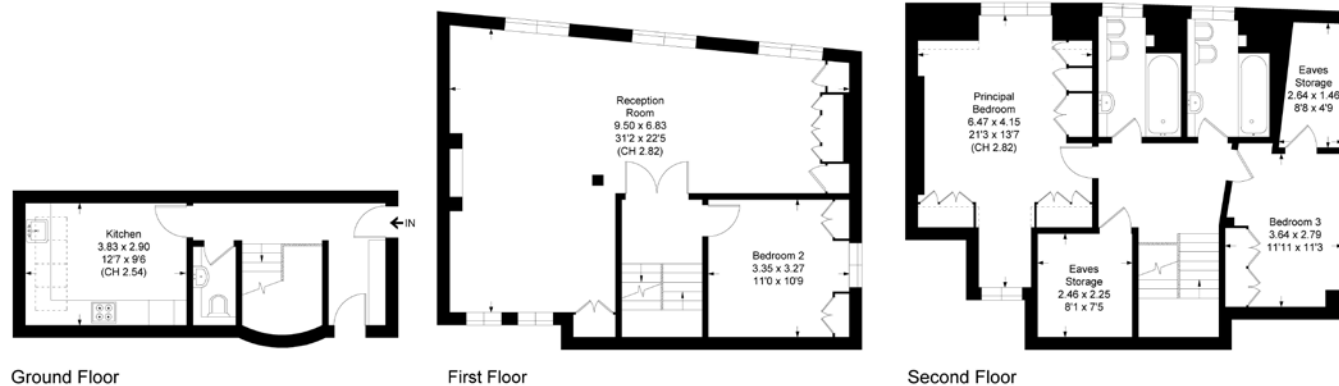
- ❖ Newly refurbished 3 bedroom Mews house presented in "as new" condition
- ❖ Spectacular first floor drawing room with hardwood flooring and double aspect
- ❖ Extending to circa 1,700 Sq. ft (157 Sq. m)
- ❖ Located on a highly desirable cobbled Mews street
- ❖ Only a 6 minute walk to Knightsbridge underground station
- ❖ World class shopping and restaurant amenities on your doorstep



APPROXIMATE AREA

Total 156.98 sq m (1,690 sq ft) Including Eaves Storage

Eaves 9.51 sq m (102 sq ft)



TERMS

Unfurnished

EPC: D

Council Tax Band: G

Local Authority: Royal Borough of
Kensington and Chelsea

Asking Price: £1,800 Per Week
(£7,800 pcm)

Fees may be applicable to potential tenants, please
ask us for more details.

Maskells

71 Walton Street, London SW3 2HT

Tel: 0207 581 2216

sales@maskells.com

lettings@maskells.com

maskells.com

We wish to advise prospective purchasers that we have prepared these sales particulars as a rough guide. We have not carried out a detailed survey or tested the services, appliances or specific fittings. Measurements are approximate.