



Ennismore Gardens Mews,
Knightsbridge, SW7

Maskells

A most charming and well presented 3 bedroom Mews house, extending to over 1,150 Sq ft (106 Sq.m m), and situated on a prime Knightsbridge Mews address within close proximity of South Kensington underground station and Hyde Park.



Accommodation and Amenities

- Charming 3 bedroom mews house
- Extending to over 1,150 Sq ft set over 2 floors
- Prime Knightsbridge Mews address
- Newly redecorated and presented in good condition
- Integral garage
- Only 0.5 miles to South Kensington Underground station
- Superb location 0.2 miles from Hyde Park



The house has been newly redecorated, is presented in clean and fresh condition, and includes the benefit of an integral garage. The accommodation comprises; entrance hall, reception room, separate kitchen, master bedroom with en-suite bathroom, two further bedrooms, shower room, garage and small terrace. EPC D.

All potential tenants should be advised that administration fees may be applicable when renting a property. Please contact us for more details of these charges.

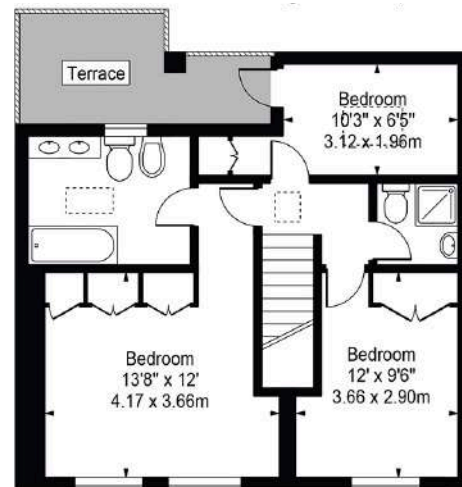




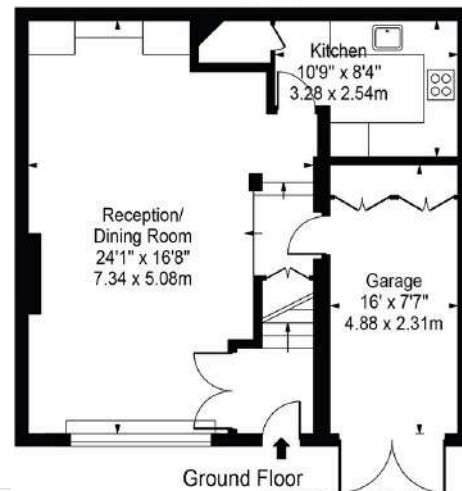


APPROXIMATE FLOOR AREA

Approx. Total Internal Area 1,151 Sq Ft / 106.93 Sq M
Approx. Gross Internal Area Of Garage 121 Sq Ft / 11.27 Sq M



First Floor



Ground Floor

TERMS

Asking Price £1,200 Per Week (£5,200 PCM)

UNFURNISHED

EPC D

Council Tax Band H

Local Authority Westminster



@maskellsea

Maskells

71 Walton Street, London SW3 2HT

Tel: 0207 581 2216

sales@maskells.com

lettings@maskells.com

maskells.com



We wish to advise prospective purchasers that we have prepared these sales particulars as a rough guide. We have not carried out a detailed survey or tested the services, appliances or specific fittings. Measurements are approximate.