



Kings Court North

CHELSEA, SW3



A charming and well presented one bedroom flat with access to communal gardens, situated on the 2nd floor (with lift) of a highly regarded building with portage. Located only 0.5 miles from South Kensington station and 0.7 miles from Sloane Square. Energy Rating C.

Upon entering, there is a coat cupboard to the left and well appointed kitchen to the right, with a guest cloakroom positioned adjacent. Towards the front is the reception room with two windows looking over Dovehouse Green. The flat is completed by a double bedroom with en-suite bathroom. There is also a pretty communal garden to the rear, to which the flat has access. Communal hot water and heating.





Kings Court North is well positioned on the Kings Road for the vast array of amenities to be found in the immediate area. Sloane Square underground station (District and Circle Lines) is 0.7 miles away and South Kensington underground station (District, Circle and Piccadilly Lines) is 0.6 miles away.

All potential tenants should be advised that administration fees may be applicable when renting a property. Please contact us for more details of these charges.

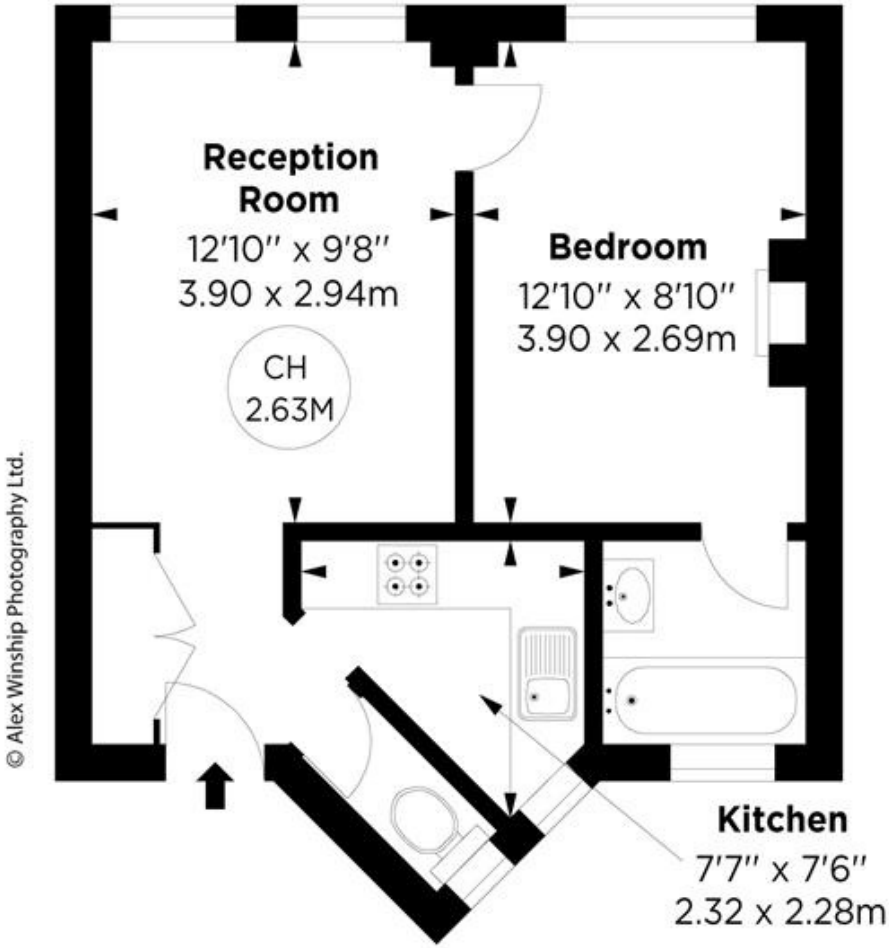
-
- Charming 1 bedroom flat in excellent condition
 - Second floor with lift
 - Porter
 - Communal heating and hot water
 - Access to communal gardens
 - Views over Dovehouse Green
 - 0.5 miles from South Kensington Station and 0.7 miles from Sloane Square



Approx. Gross Internal Area: 371 Sq Ft / 34.74 Sq M



Key :
CH - Ceiling Height



© Alex Winship Photography Ltd.

SECOND FLOOR

We wish to advise prospective purchasers that we have prepared these sales particulars as a rough guide. We have not carried out a detailed survey or tested the services, appliances or specific fittings. Measurements are approximate.

Asking Price: £595 Per Week (£2,579 PCM)

FURNISHED

EPC: C

LOCAL AUTHORITY: Royal Borough of Kensington and Chelsea

COUNCIL TAX BAND: D

 Maskells

71 Walton Street

London

SW3 2HT

0207 887 2532

lettings@maskells.com