



# WALTON STREET, LONDON, LONDON, SW3

## £692 Per Week

### FEATURES

- Best in class one bedroom apartment
- Positioned on the first floor overlooking the Central Courtyard
- Recently refurbished with a contemporary feel throughout
- Modern kitchen with separate washing machine and tumble dryer
- Large double bedroom with built-in wardrobes
- Securely gated development with porter



# Maskells

A best-in-class one bedroom apartment that has been recently refurbished and stylishly designed to give it a modern and contemporary feel throughout. Positioned on the first floor, this beautiful apartment is situated within a prime and securely gated portered development and is perfectly located a short walk from both South Kensington underground (0.3 miles), Sloane Square (0.5 miles) and the amenities of King's Road (0.4 miles). EPC C.

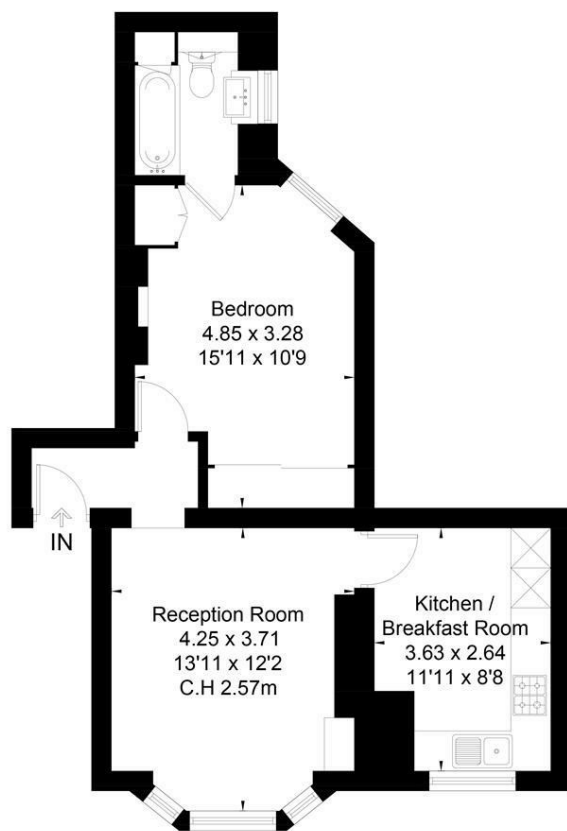
The apartment features an entrance hallway, large double bedroom with excellent built-in wardrobes, an ensuite bathroom, a bright and sunny reception room with views over the internal courtyard and a large and well-equipped kitchen complete with a washing machine and separate tumble dryer.

Call us on  
**0207 581 2216**


**lettings@maskells.com**  
**www.maskells.com**


Council Tax Band  
**F**

WALTON STREET, SW3  
Approximate Floor Area = 47.7 sq m / 513 sq ft



First Floor

 This floor plan has been drawn in accordance with RICS Property Measurement 2nd edition. All measurements, including the floor area, are approximate and for illustrative purposes only @djd.london #76404

Energy Efficiency Rating		Current	Potential
<i>Very energy efficient - lower running costs</i>			
(92 plus) <b>A</b>			
(81-91) <b>B</b>			
(69-80) <b>C</b>		70	81
(55-68) <b>D</b>			
(39-54) <b>E</b>			
(21-38) <b>F</b>			
(1-20) <b>G</b>			
<i>Not energy efficient - higher running costs</i>			
<b>England &amp; Wales</b>		EU Directive 2002/91/EC 	

Agents Note: Whilst every care has been taken to prepare these particulars, they are for guidance purposes only. All measurements are approximate and are for general guidance purposes only and whilst every care has been taken to ensure their accuracy, they should not be relied upon and potential buyers are advised to recheck the measurements.

