



SILVERTHORNE ROAD, CLAPHAM W8

£660 Per Week (£2,860 PCM)

FEATURES

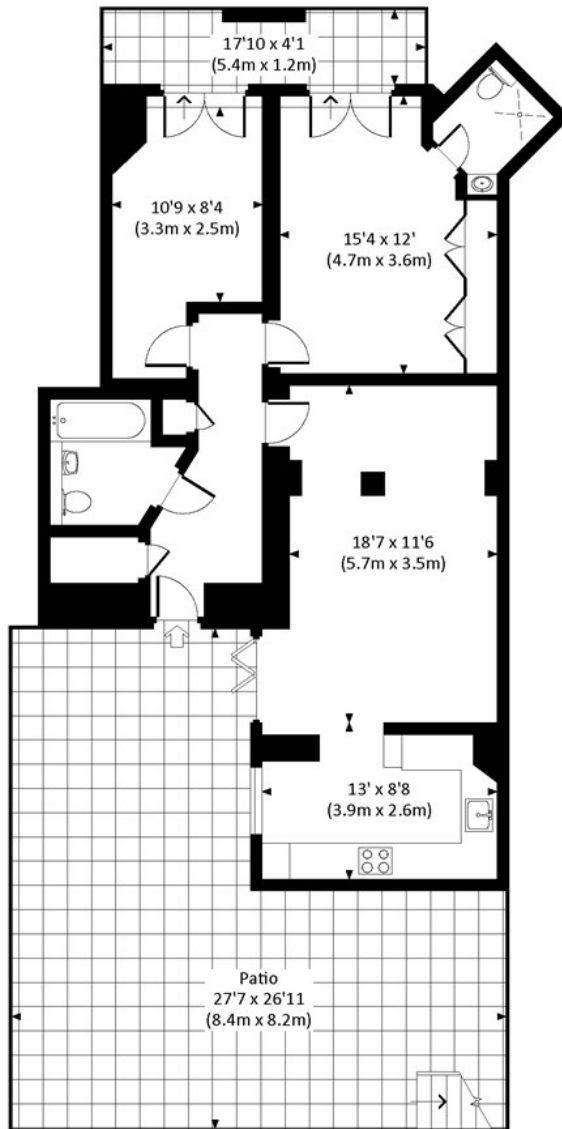
- 2 double bedroom, 2 bathroom garden flat
- Bi-fold doors leading to private patio garden
- Over 829 Square feet of internal accommodation
- Close proximity (0.5 miles) to Clapham Common Underground station
- Large open plan living / dining area
- New wood flooring
- Fabulous private garden measuring over 500 Sq ft



Maskells

SILVERTHORNE ROAD, SW8

Approx. gross internal area
829 Sq Ft. / 77.1 Sq M.



LOWER GROUND FLOOR



All measurements have been made in accordance with RICS Code of Measuring Practice which are approximate only and only for illustrative purposes. For the avoidance of doubt, Dowling Jones Design shall not be liable for any reliance on these measurements. © 2019 www.dowlingjones.com 020 7610 9933

Energy Efficiency Rating		
	Current	Potential
Very energy efficient - lower running costs		
(92 plus) A		
(81-91) B		
(69-80) C		
(55-68) D		
(39-54) E		
(21-38) F		
(1-20) G		
Not energy efficient - higher running costs		
	77	78
England & Wales		
EU Directive 2002/91/EC		

Call us on

0207 581 2216

lettings@maskells.com

www.maskells.com

Council Tax Band: D

Beautifully presented bright and contemporary 2 bedroom 2 bathroom flat with large patio garden, situated a short walk from Clapham Old Town and Clapham Common Underground station. Energy rating C.

This lateral apartment has been recently refurbished throughout and benefits from wood flooring, large open plan living / dining area with Bi-fold doors leading to the garden (excellent for al-fresco summer dining), two double bedrooms, two bathrooms (one en-suite) and excellent storage.

The property is 0.3 miles to Wandsworth Road mainline train station (2 stops to Waterloo), a 5 minute walk to the centre of Clapham Old Town and only 0.5 miles to Clapham Common underground station (Northern line).

All potential tenants should be advised that administration fees may be applicable when renting a property. Please contact us for more details of these charges.

Agents Note: Whilst every care has been taken to prepare these particulars, they are for guidance purposes only. All measurements are approximate and are for general guidance purposes only and whilst every care has been taken to ensure their accuracy, they should not be relied upon and potential buyers are advised to recheck the measurements.

Maskells