



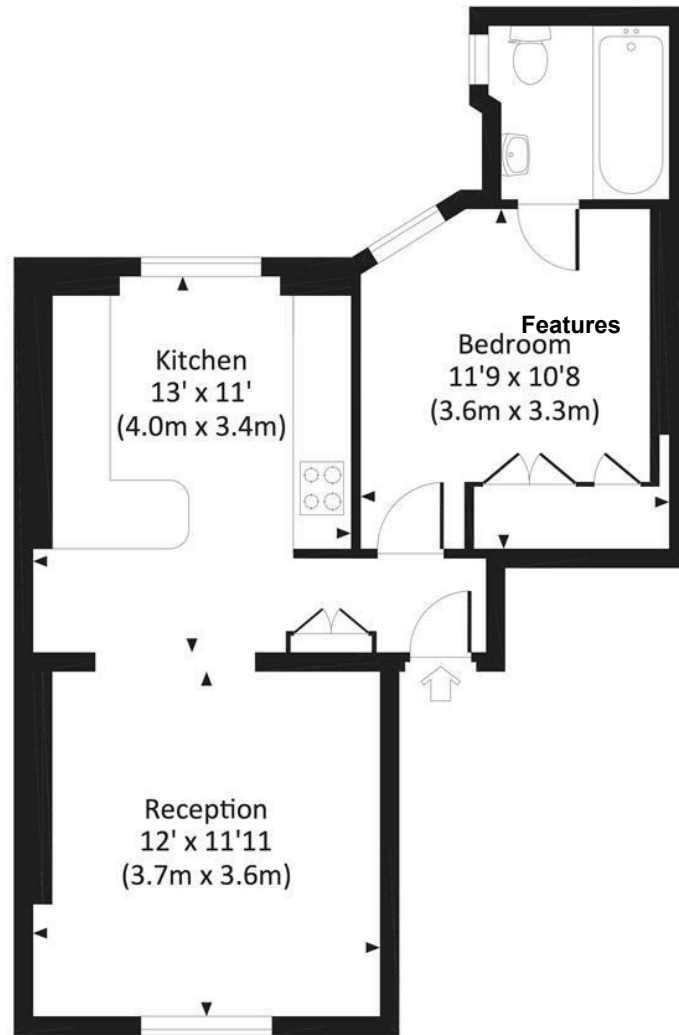
THE MARLBOROUGH, CHELSEA, SW3




Maskells

THE MARLBOROUGH, SW3

Approx. gross internal area
473 Sq Ft. / 43.9 Sq M.



FOURTH FLOOR

 All measurements have been made in accordance with RICS Code of Measuring Practice which are approximate only and only for illustrative purposes. For the avoidance of doubt, Dowling Jones Design shall not be liable for any reliance on these measurements. © 2017 www.dowlingjones.com 020 7610 9933

A bright, modern and open plan 1 bedroom apartment, with superb views of the London skyline, situated on the top floor of The Marlborough, a popular and secure gated mansion building with porter, situated on the border of Chelsea and Knightsbridge. EPC E.

Features

- Large open plan 1 bedroom apartment
- Top floor flat with superb views
- Modern fully fitted kitchen
- Built in wardrobes in the bedroom
- Modern tiled bathroom with shower over bath
- Superb Location
- 0.4 miles to South Kensington
- 0.6 miles to Sloane Square
- 0.7 miles to Hyde Park

Terms

Price £595 Per Week (£2,578 Per Month)

Maskells

0207 581

lettings@maskells.com
www.maskells.com