



BEAUFORT STREET, LONDON, SW3

£519 Per Week (£2,249 PCM)

FEATURES

- Smart, newly refurbished 1 bedroom apartment
- New fully fitted kitchen
- High ceilings and lots of natural light
- 0.5 miles from Battersea Park
- Wood flooring throughout the flat
- Modern tiled bathroom with shower over bath
- Great location 0.1 mile from King's Road
- 1 mile from South Kensington underground station

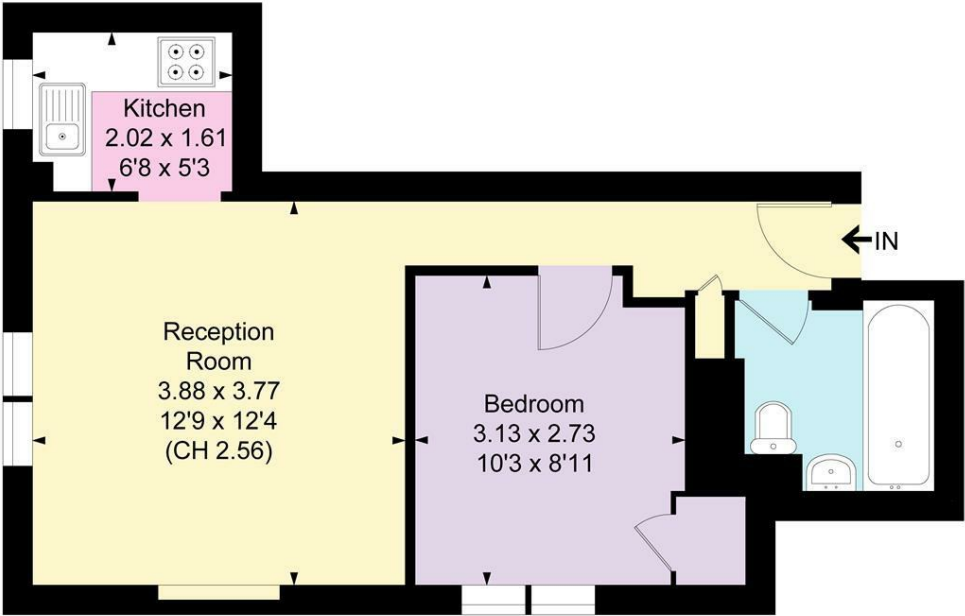


Maskells

Energy Efficiency Rating		
	Current	Potential
Very energy efficient - lower running costs		
(92 plus) A		
(81-91) B		
(69-80) C		
(55-68) D		
(39-54) E		
(21-38) F		
(1-20) G		
Not energy efficient - higher running costs		
England & Wales	EU Directive 2002/91/EC	

Winchester House, SW3

Approximate Floor Area = 35.98sq m / 387 sq ft



Second Floor

Not to scale, for guidance only and must not be relied upon as a statement of fact.
All measurements and areas are approximate only

Call us on
0207 581 2216

Lettings@maskells.com
www.maskells.com

Council Tax Band: D
EPC: D

A smart, contemporary and newly refurbished 1 bedroom apartment with wood flooring throughout, high ceilings and lots of natural light, situated on the 2nd floor of a period building only a few minutes walk from King's Road.

The flat has been newly refurbished throughout including new fitted kitchen with new appliances, a modern tiled bathroom and includes a suite of new furniture all designed to provide the incoming tenant with a welcoming and immacultely presented home. EPC D.

All potential tenants should be advised that administration fees may be applicable when renting a property. Please contact us for more details of these charges. Maskells are members of Propertymark the leading membership body for property agents. We are part of the Propertymark Client Money Protection scheme and a member of The Property Ombudsman Scheme (approved by the Office of Fair Trading) and subscribe to its Codes of Practice for Letting Agents.

Agents Note: Whilst every care has been taken to prepare these particulars, they are for guidance purposes only. All measurements are approximate and are for general guidance purposes only and whilst every care has been taken to ensure their accuracy, they should not be relied upon and potential buyers are advised to recheck the measurements

