

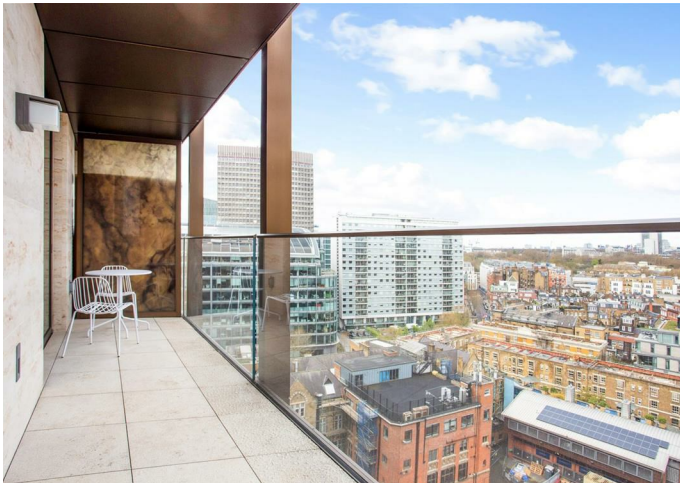


KINGS GATE WALK, LONDON, SW1E

£1,350 Per Week

FEATURES

- Stylish 2 bedroom flat on the 11th (upper) floor
- Oak and limestone flooring
- Comfort cooling
- Secure development with 24 hour concierge services
- Large private balcony
- Lift to all floors



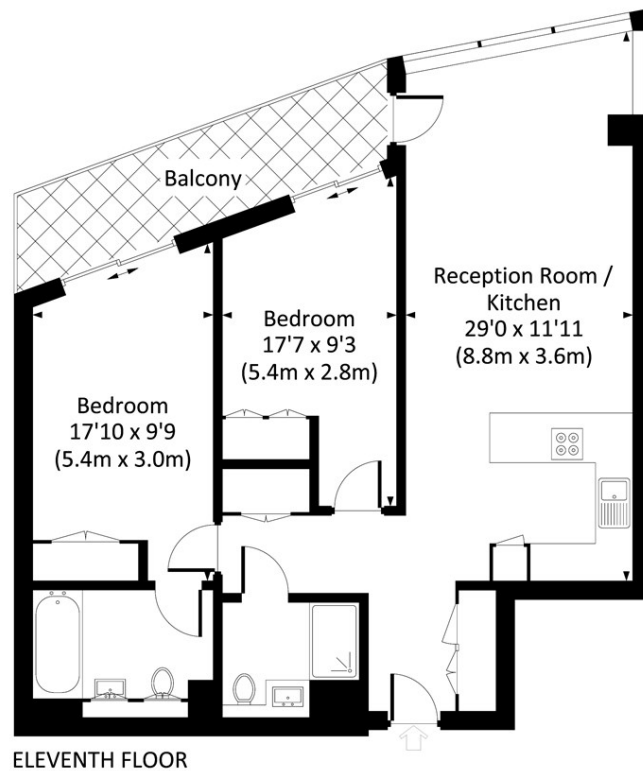
Maskells


Sleek and stylish two bedroom apartment on 11th floor (with lift) of a fabulous new development superbly located right in the heart of Victoria moments from Buckingham Palace, St James's Park and Victoria station. The flat benefits from a large balcony, comfort cooling and under floor heating, with oak flooring to the reception and limestone tiling to the bathrooms, as well as thorough concierge services. Energy Rating B. Secure parking is available by separate negotiation.

All potential tenants should be advised that administration fees may be applicable when renting a property. Please contact us for more details of these charges.

KINGS GATE WALK , WESTMINSTER , SW1E

Approx. gross internal area
870 Sq Ft. / 80.8 Sq M.




 All measurements have been made in accordance with RICS code of Measuring Practice which are approximate only and only for illustrative purposes. For the avoidance of doubt, Dowling Jones Design shall not be liable for any reliance on these measurements. © 2022 www.dowlingjones.com 020 7610 9933

Call us on
0207 581 2216

lettings@maskells.com
www.maskells.com

Council Tax Band
G

Energy Efficiency Rating		Current	Potential
<i>Very energy efficient - lower running costs</i>			
(92 plus) A			
(81-91) B		86	86
(69-80) C			
(55-68) D			
(39-54) E			
(21-38) F			
(1-20) G			
<i>Not energy efficient - higher running costs</i>			
England & Wales		EU Directive 2002/91/EC 	

Agents Note: Whilst every care has been taken to prepare these particulars, they are for guidance purposes only. All measurements are approximate and are for general guidance purposes only and whilst every care has been taken to ensure their accuracy, they should not be relied upon and potential buyers are advised to recheck the measurements.

Maskells